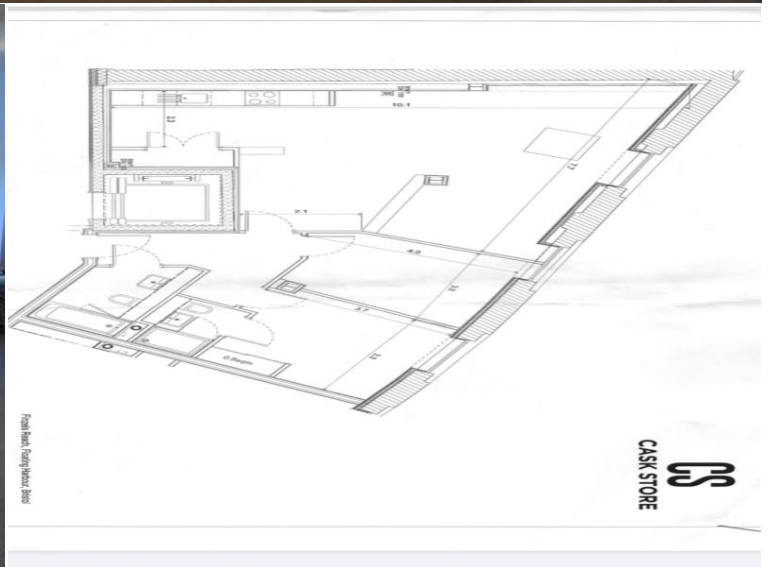




Bradley & Co.
LETTING AGENTS

Office: 0117 329 1400
www.bradleyandco.agency



Finzel's Reach

, East Tucker Street, Bristol, BS1 6WF

Rental £1,950 Monthly
2 Bedroom Flat / Apartment
Available 29 April 2024

Clifton, 4a Waterloo St, Clifton, Bristol, , BS8 4BT
Email: info@bradleyandco.agency | Tel: 0117 329 1400

Opening Times: Mon 09.00 - 17.30 | Tue 09.00 - 17.30 | Wed 09.00 - 17.30 | Thurs 09.00 - 17.30 | Fri 09.00 - 17.30 | Sat 09.00 - 12.30 | Sun 09.00 - 12.30

- * Unfurnished
- * Contemporary finish
- * Water views
- * Superb location

- * EPC Band B
- * Allocated parking
- * Unfurnished
- * On site concierge

*

Situation

This is a chance to live in one of the last remaining historic buildings to be converted next to the Bristol harbourside. Located in the vibrant Finzel's Reach development this fabulous unfurnished 2 bed apartment in the Cask Store has waterside views from its 4th floor windows which also overlook Castle Park which is accessed by Castle Bridge. The development which has a vibrant social and food scene with its weekly food markets offers spacious two bedroom living for professionals looking for quality accommodation. Benefiting from open plan living/dining/kitchen area with contemporary room dividers to give defined areas it gives a light & airy feeling. The modern fitted kitchen has built-in white goods with washer/dryer in separate utility cupboard, there are two bathrooms, underfloor heating & on-site concierge. Allocated underground parking space. Council Tax Band D. This property has standard utilities provided to the property to include water and electric & gas. Water and gas are based on a communal building system and as such the Block Estate Team invoice the landlord directly. To secure the property we require a holding deposit £450

EPC Energy rating - B. Gas & water bills approx @ £200 pcm paid separately to the landlord. Communal Satellite dish. (Video and photos from 2022) SORRY NO STUDENTS

Directions

Further Information

The deposit required is £2,250

Accommodation

Floorplan

All measurements are approximate.

