



WHITLOCKS
ESTATE AGENTS

15 Oving Road, Chichester
£650,000

- Charming Detached House positioned in Chichester City Centre
- Four Sizeable Bedrooms
- Cosy Lounge
- Spacious Dining Room
- Sizeable Kitchen / Breakfast Room
- Modern Fitted Bathroom
- Double Glazing and Gas Fired Central Heating throughout
- Large Secluded Rear Garden
- On Street Parking
- Positioned in the Heart of Chichester City Centre

Council Tax band: E

Tenure: Freehold





Whitlocks Estate Agents is thrilled to present this spacious 4-bedroom Detached House, brimming with characterful features, in the heart of Chichester City Centre.

This flint-built property spans two floors, with the ground floor offering a charming Lounge, a generously sized Dining room, and a spacious Kitchen/Breakfast room, complete with a convenient cloakroom.

On the first floor, you will discover three well-proportioned double Bedrooms and a single Bedroom, complemented by a modern, well-appointed Bathroom.

The residence boasts Double Glazing, Gas Fired Central Heating, and ample storage space throughout.

To the rear of the property, the extensive garden provides a tranquil retreat, offering complete seclusion and featuring lush lawns, an elevated decking area, and a separate patio for outdoor relaxation.

There is also plenty of on-street parking available.

Viewing is a must to appreciate the spacious accommodation coupled with a second-to-none location.





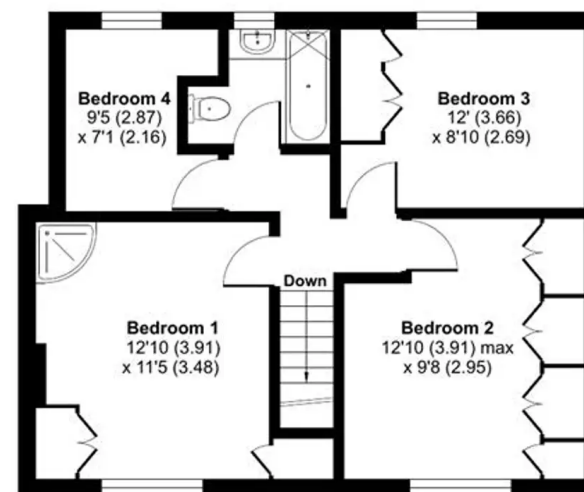
Chichester offers an abundance of shops as well as trendy cafes, restaurants, bars as well as a Festival Theatre, additionally, there are fantastic transport links including a reliable bus service and train station with a direct line to London Victoria. Chichester is also within close proximity to Goodwood which is famous for its special events including the world-renowned Festival of Speed and Goodwood Revival for motor racing enthusiasts as well as a season of Horse Racing including the Qatar Goodwood Festival. Chichester offers plenty of beautiful walks and cycle routes on its doorstep, including Brandy Hole Copse Woodland, Centurion Way or onto the picturesque Chichester Marina to watch the boats and yachts. You are also within a short drive to Selsey Sea Front as well as the ever-popular white sand beach, the West Wittering's.

Whitlock Estate Agents Limited trading as Whitlocks Estate Agents for themselves and for the vendor or lessors of this property whose agents they are, give notice that (i) these particulars do not constitute any part of an offer or contract, (ii) all statements contained within these particulars are made without responsibility on the part of Whitlocks Estate Agents or the vendor, (iii) whilst made in good faith, none of the statements contained within these particulars are to be relied upon as a statement or representation of fact, (iv) any intending purchasers must satisfy themselves by inspection or otherwise as to the correctness of each of the statements contained within these particulars, (v) the vendor does not make or give either Whitlocks Estate Agents or any person in their employment any authority to make or give representation or warranty whatsoever in relation to this property. Wide angle lenses may be used.

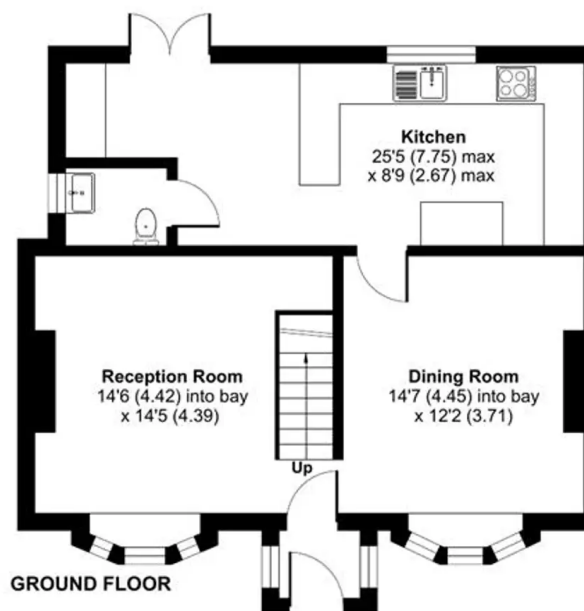
Oving Road, Chichester, PO19

Approximate Area = 1201 sq ft / 111.5 sq m

For identification only - Not to scale



FIRST FLOOR



GROUND FLOOR



Floor plan produced in accordance with RICS Property Measurement Standards incorporating International Property Measurement Standards (IPMS2 Residential). © rihcom 2023. Produced for Whitlocks Estate Agents Limited. REF: 1053660

WHITLOCKS
ESTATE AGENTS



Whitlocks Estate Agents - Bognor Regis & Pagham

Whitlocks Estate Agents, 229 Pagham Road - PO21 3QD

01243 262747 • sales@whitlocksestateagents.co.uk • whitlocksestateagents.co.uk/