

Approximate Gross Internal Area
Ground Floor = 72.5 sq m / 780 sq ft
First Floor = 71.2 sq m / 766 sq ft
Garage = 22.6 sq m / 243 sq ft
Total = 166.3 sq m / 1,789 sq ft

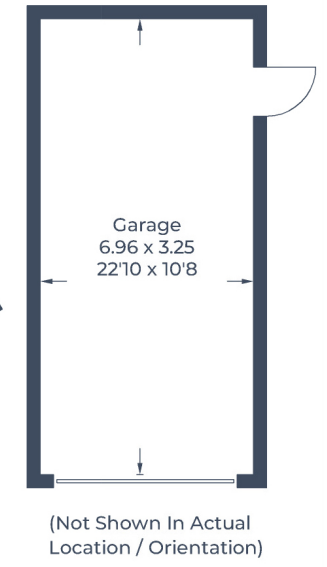
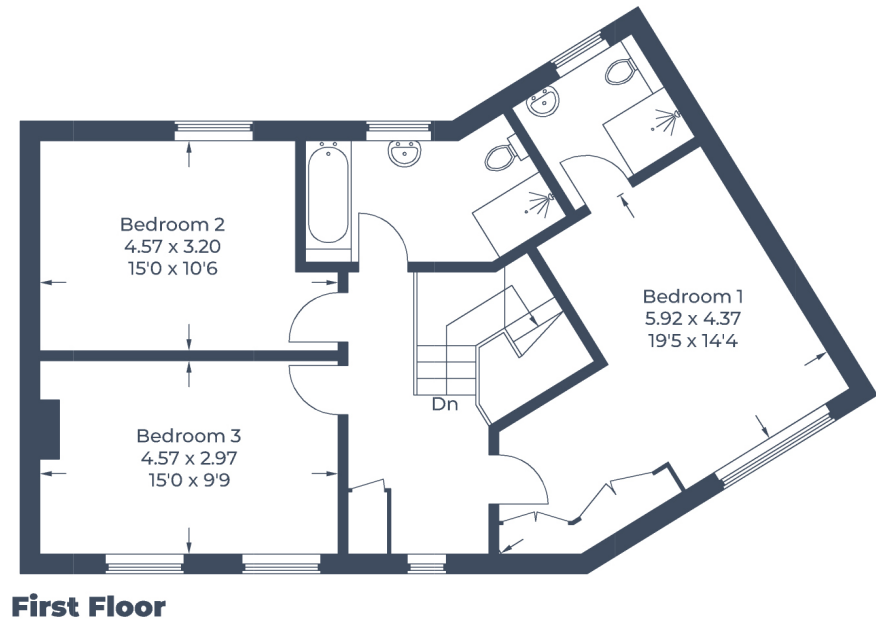
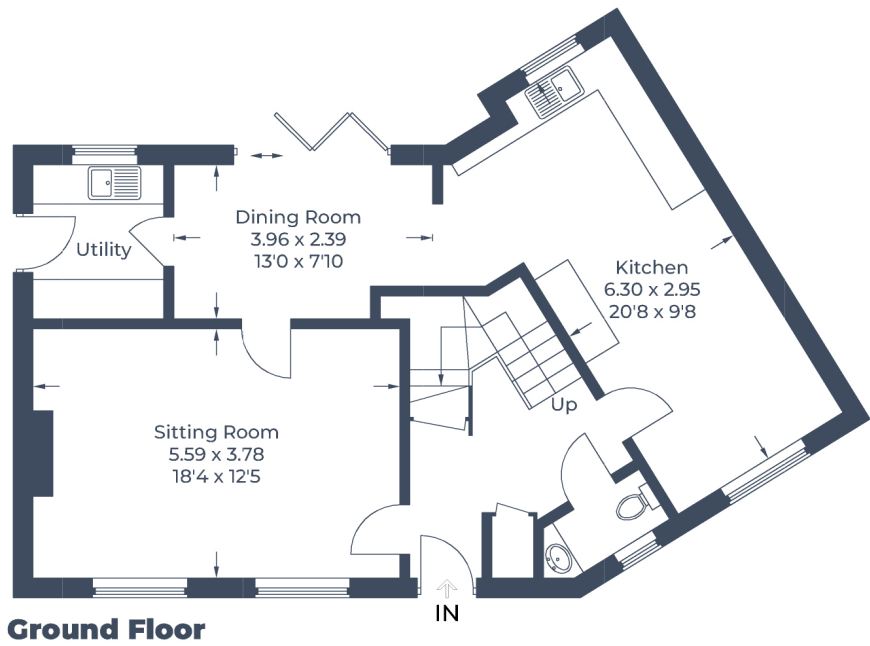


Illustration for identification purposes only,
measurements are approximate, not to scale.