

£1,400 pcm

4 Jubilee Way, Kent, DA14 4JP



- WELL PRESENTED 2 BEDROOM GROUND FLOOR FLAT
- ELECTRIC HEATING & DOUBLE GLAZED WINDOWS
- SPACIOUS LOUNGE WITH WINDOWS TO REAR
- MODERN KITCHEN WITH A RANGE OF WALL & BASE UNITS
- 1 X DOUBLE & 1 X SINGLE SIZE BEDROOMS
- MODERN BATHROOM WITH OVERBATH SHOWER
- COMMUNAL GARDENS & PARKING TO REAR
- AVAILABLE EARLY JUNE

To view all our homes: www.drewery.co.uk





WELL PRESENTED 2 BEDROOM GROUND FLOOR FLAT: UNFURNISHED

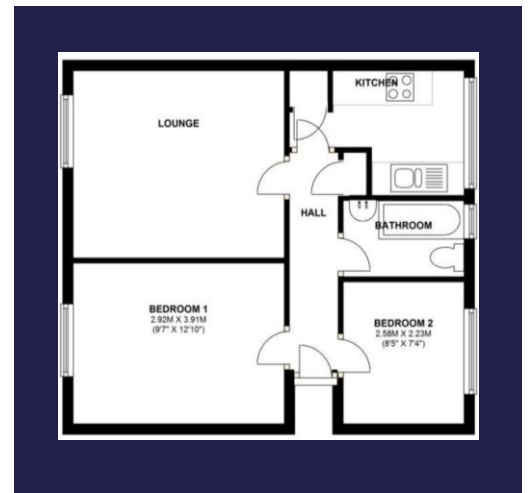
A well presented 2 bedroom ground floor flat. Situated in a popular location and close to all local amenities including: shops, schools, bus routes and Sidcup mainline railway station.

The property benefits from electric heaters, double glazed windows and a neutral décor throughout.

The accommodation comprises: Entrance hallway. Spacious lounge with window overlooking rear gardens. Modern kitchen with a range of wall and base units, work surfaces, stainless steel sink with drainer, electric oven, hob, extractor and spaces for washing machine and fridge / freezer. 1 x double and 1 x single size bedrooms. Modern bathroom with hand basin, bath with overbath shower and W.C. Externally there are communal gardens and parking (1 x permit will be provided) to the rear.

Available early June.

Restrictions: no pets, smokers or students.



Energy Efficiency Rating D.
(55/71) EIR 0/0

If you would like to view please contact Drewery Property Consultants on **020 8269 6600**

These particulars are intended to give a fair description of the property but their accuracy cannot be guaranteed. Intending tenants should not rely on them as statements of representation of fact, but must satisfy themselves by inspection or otherwise as to their accuracy. All measurements quoted are approximate. None of the appliances/services have been tested by ourselves.

*Important - Admin fees apply per applicant. Please visit our website www.drewery.co.uk (information for tenants - Fees & other costs) or contact our staff.