

£1,550 pcm

Park House, Chislehurst Road, Sidcup, Kent, DA14 6BN



- **SPACIOUS & WELL PRESENTED 2 BEDROOM 1ST FLOOR FLAT**
- **GAS CENTRAL HEATING, DOUBLE GLAZED WINDOWS & NEUTRAL DECOR**
- **CLOSE TO ALL LOCAL AMENITIES**
- **SPACIOUS LOUNGE WITH LOVELY VIEWS**
- **MODERN KITCHEN FITTED WITH APPLIANCES**
- **2 X DOUBLE SIZE BEDROOM WITH BUILT IN STORAGE**
- **BATHROOM WITH OVERBATH SHOWER**
- **COMMUNAL GARDENS, GARAGE & PARKING AREA**

To view all our homes: www.drewery.co.uk





SPACIOUS & WELL PRESENTED 2 BEDROOM 1ST FLOOR FLAT: UNFURNISHED

Drewery Property Consultants are pleased to offer for lettings this spacious and well presented 2 bedroom first floor purpose built flat.

Situated in a popular residential location which overlooks Sidcup Place, this property is close to all local amenities including: shops, Sidcup High Street, schools, bus routes, motorway links and within easy access of Sidcup mainline railway station.

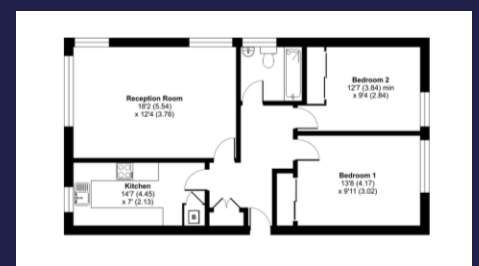
The property benefits from gas central heating, double glazed windows and has been redecorated throughout in a neutral decor.

The accommodation comprises: Entrance hallway. Spacious and bright living room with dual aspect windows. Kitchen fitted with range of wall and base units, work surfaces, sink with drainer, built in oven, electric hob, extractor fridge / freezer, washing machine and dishwasher. 2 x double size bedrooms with built in storage. Tiled bathroom with hand basin, bath with overbath shower, heated towel rail and W.C. Externally there are well kept communal gardens around the block. There is also a private garage and parking area (not allocated) available to the rear.

The property is available immediately.

Restrictions: no pets, smokers, children or students.

Would suit a single person or professional couple.



Energy Efficiency Rating C.
(69/79) EIR 67/80

If you would like to view please contact Drewery Property Consultants on 020 8269 6600

These particulars are intended to give a fair description of the property but their accuracy cannot be guaranteed. Intending tenants should not rely on them as statements of representation of fact, but must satisfy themselves by inspection or otherwise as to their accuracy. All measurements quoted are approximate. None of the appliances/services have been tested by ourselves.

*Important - Admin fees apply per applicant. Please visit our website www.drewery.co.uk (information for tenants - Fees & other costs) or contact our staff.