

£1,375 pcm

Weir Road, Bexley, Kent, DA5 1BJ



- SPACIOUS & WELL PRESENTED 1ST FLOOR MAISONETTE
- SITUATED IN THE HEART OF BEXLEY VILLAGE IN A SOUGHT AFTER DEVELOPMENT
- GAS CENTRAL HEATING, DOUBLE GLAZING & NEUTRAL DECOR
- 2 X ALLOCATED PARKING SPACES
- LIVING ROOM WHICH IS OPEN PLAN TO KITCHEN
- KITCHEN WITH A RANGE OF MODERN WALL & BASE UNITS
- GOOD SIZE BEDROOM WITH BUILT IN WARDROBE
- MODERN BATHROOM WITH OVERBATH SHOWER

To view all our homes: www.drewery.co.uk





SPACIOUS & WELL PRESENTED 1ST FLOOR MAISONETTE: UNFURNISHED

Drewery Property Services are pleased to be able to offer for lettings this spacious and extremely well presented 1 bedroom 1st floor maisonette. Situated in the heart of Bexley Village within a sought after private and gated development, this property is close to all local amenities including shops, local parks, motorway links, bus routes and is within a few minutes walk of Bexley mainline railway station.

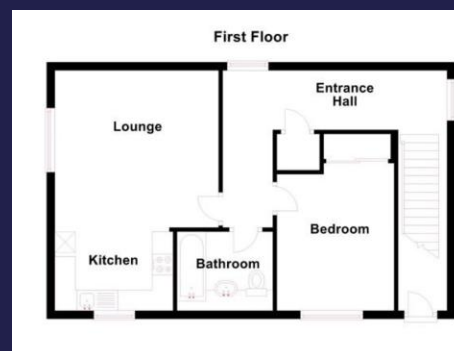
This beautiful property benefits from gas central heating, double glazed windows, modern neutral décor, and allocated parking.

The accommodation comprises: Own front door with stairs leading to a spacious hallway. Living room with carpet which is open plan to a modern kitchen. Kitchen with a range of modern wall and base units, work surfaces, sink with drainer, oven, hob, washer dryer, dishwasher and fridge / freezer. Good size bedroom with large built in wardrobe. Modern bathroom with hand basin, bath with overbath shower and W.C. Externally the maisonette has 2 x allocated parking spaces.

The property is available mid April.

Restrictions: no pets, smokers, children or students.

Must be viewed to appreciate size, finish and location.



Energy Efficiency Rating B.
(91/91) EIR 0/0

If you would like to view please contact Drewery Property Consultants on **020 8269 6600**

These particulars are intended to give a fair description of the property but their accuracy cannot be guaranteed. Intending tenants should not rely on them as statements of representation of fact, but must satisfy themselves by inspection or otherwise as to their accuracy. All measurements quoted are approximate. None of the appliances/services have been tested by ourselves.

*Important - Admin fees apply per applicant. Please visit our website www.drewery.co.uk (information for tenants - Fees & other costs) or contact our staff.