



Old Farm Avenue

Sidcup
DA15 8AR

Freehold

3 bedroom semi detached house
Low maintenance garden with garden room/bar
Close to all local amenities and transport links
Previously planning for extension was granted in 2021
Off street parking to the front
Downstairs bathroom
Kitchen/diner





FULL DESCRIPTION

This well presented, three bedroom semi detached house is situated close to local shops, transport links and popular schools and has scope for extension (STPP)

The property briefly comprises of: Entrance hall, lounge, kitchen/diner and ground floor bathroom. To the first floor are three bedrooms. Externally the property benefits from off street parking to the front and a low maintenance rear garden with garden room/bar.

Early viewing is highly recommended.

(please note previous planning permission for extension was granted in 2021 and plans are available to view).

Directions

From our Sidcup office, proceed straight over into Old Farm Avenue and the property can be found on the left hand side. Closest Stations: New Eltham (0.53 mi) Sidcup (0.90 mi) Mottingham (1.42 mi) Closest Schools: Dulverton Primary School (0.18 mi) Longlands Primary School (0.55 mi) Chislehurst and Sidcup Grammar School (1.05 mi)



Local Authority
Council Tax Band
EPC Rating

Bexley London Borough Council
D
E

Old Farm Avenue, Sidcup, DA15

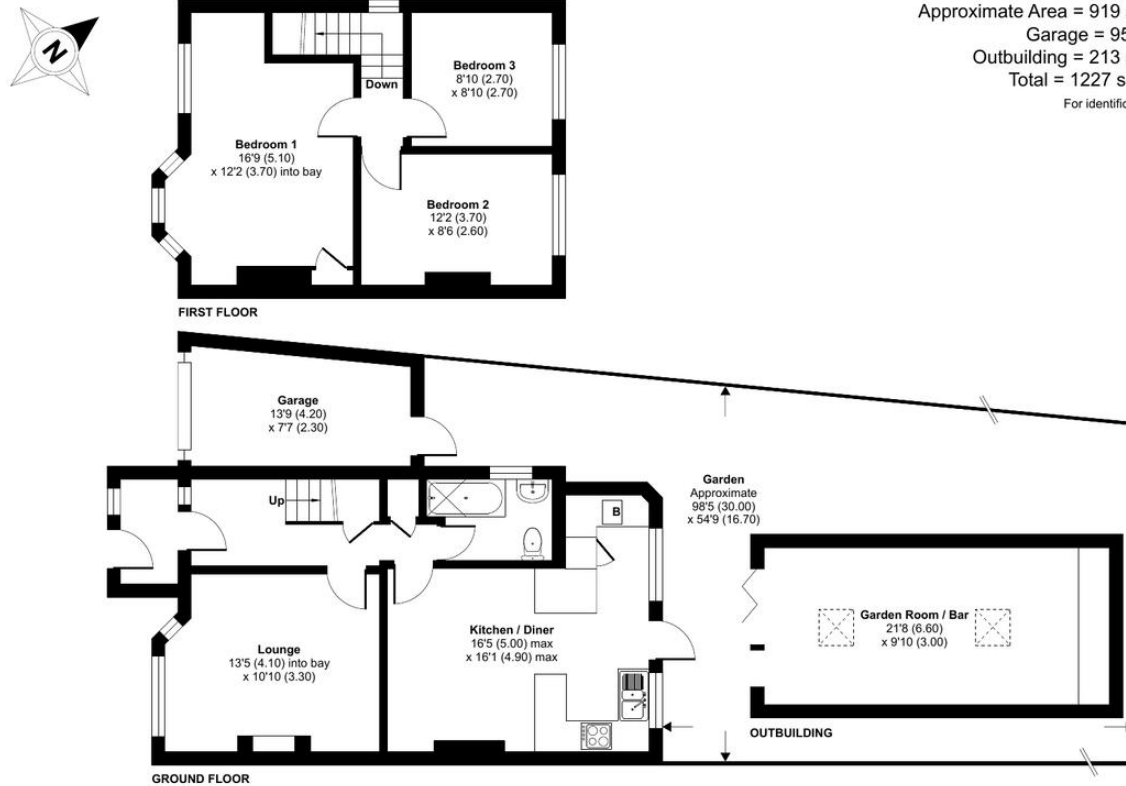
Approximate Area = 919 sq ft / 85.3 sq m

Garage = 95 sq ft / 8.8 sq m

Outbuilding = 213 sq ft / 19.7 sq m

Total = 1227 sq ft / 113.8 sq m

For identification only - Not to scale



Floor plan produced in accordance with RICS Property Measurement 2nd Edition,
Incorporating International Property Measurement Standards (IPMS2 Residential). © nrichcom 2024.
Produced for Drewery. REF: 1320098

Drewery Property Consultants
128 Station Road
Sidcup
Kent
DA15 7AF

Contact
020 8269 6605
info@drewery.co.uk
www.drewery.co.uk

Agents Note: Whilst every care has been taken to prepare these particulars, they are for guidance purposes only. All measurements are approximate and are for general guidance purposes only and whilst every care has been taken to ensure their accuracy, they should not be relied upon and potential buyers/tenants are advised to recheck the measurements.