



**Blenheim Court**

Sidcup  
DA14 6QQ

**Leasehold**

2 bedroom ground floor maisonette  
Chain Free  
Off street parking to the front for two cars  
Own rear garden  
Ideal first purchase or for someone downsizing  
Easy access to local shops and schools  
Convenient for New Eltham station

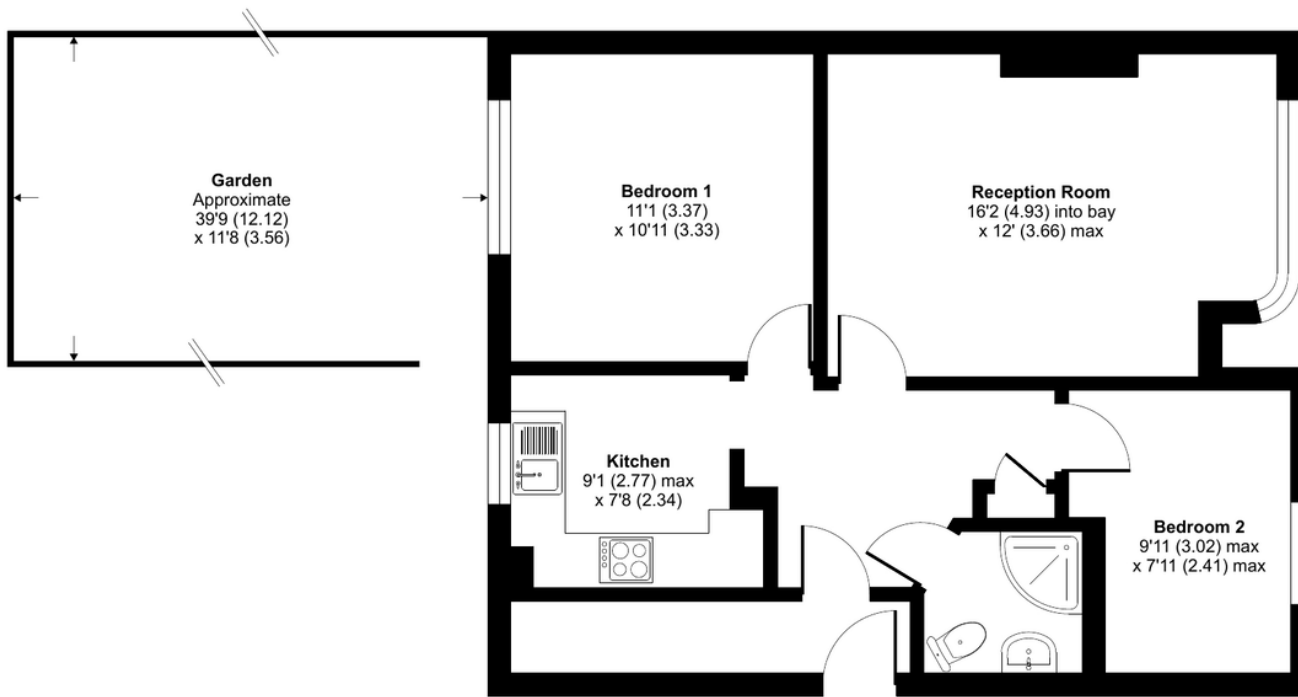


**Local Authority** Bexley London Borough  
Council  
**Council Tax Band** C  
**EPC Rating** C

**Lease** 101 years remaining  
**Service Charge** £367.75 per annum (for buildings  
insurance)  
**Ground Rent** £150 per annum

## Blenheim Court, Sidcup, DA14

Approximate Area = 611 sq ft / 56.7 sq m  
For identification only - Not to scale



GROUND FLOOR

**Drewery Property Consultants**  
128 Station Road  
Sidcup  
Kent  
DA15 7AF

**Contact**  
020 8269 6605  
info@drewery.co.uk  
www.drewery.co.uk

**Agents Note:** Whilst every care has been taken to prepare these particulars, they are for guidance purposes only. All measurements are approximate and are for general guidance purposes only and whilst every care has been taken to ensure their accuracy, they should not be relied upon and potential buyers/tenants are advised to recheck the measurements.

