



**Rowley Avenue**

Sidcup  
DA15 9LF

**Freehold**

Spacious 4 bedroom end of terrace house  
Great location for local schools, parks, shops  
and transport links  
Off street parking and garage to rear  
Garden backing onto local playing fields  
Ideal family home  
Through lounge  
Kitchen & utility room



## FULL DESCRIPTION

Offered for sale is this spacious 4 bedroom house that we feel would make a great family home. It sits in a location that offers easy access to the local shops, parks, transport links and some sought after schools.

The property has been well extended and briefly comprises of: Entrance hall, a large through lounge, a good sized kitchen that flows nicely into a rear utility room and downstairs w.c. The first floor offers 4 bedrooms and shower room.

Externally there is off street parking to the front and a rear garage and garden that backs onto the local playing fields.

We feel this house offers a lot of space and would make a great family home. Internal viewing comes highly recommended .



## Directions

From our Sidcup office, turn right and straight over at the traffic lights. Take the first turning on the right into Burnt Oak Lane which bends several times, but take the first turning on the right into Rowley Avenue.  
Closest Stations: Sidcup (0.79 mi) Albany Park (0.80 mi) Bexley (1.49mi) Closest Schools: Sherwood Park Primary School (0.25 mi) Chatsworth Infant School (0.4 mi) Hurstmere School for Boys (0.36 mi)Blackfen School for Girls (0.36 mi)



**Local Authority**  
**Council Tax Band**  
**EPC Rating**

Bexley London Borough Council

D  
D

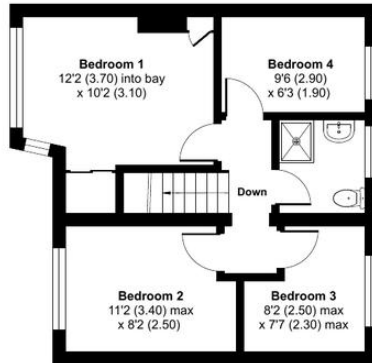
## Rowley Avenue, Sidcup, DA15

Approximate Area = 993 sq ft / 92.2 sq m

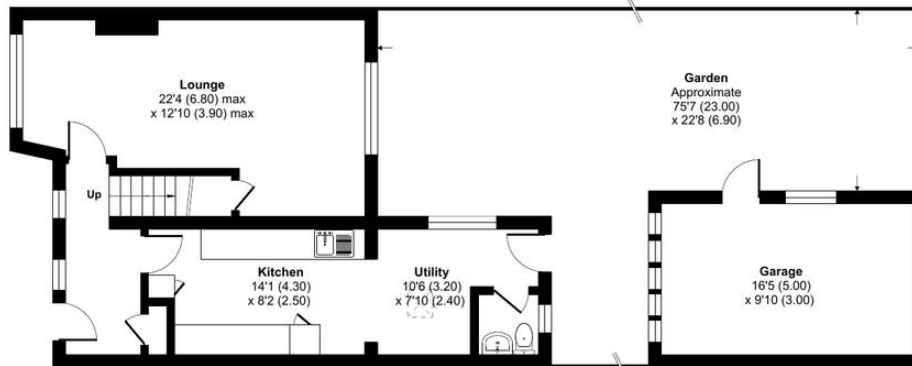
Garage = 161 sq ft / 14.9 sq m

Total = 1154 sq ft / 107.1 sq m

For identification only - Not to scale



FIRST FLOOR



GROUND FLOOR



Floor plan produced in accordance with RICS Property Measurement 2nd Edition,  
Incorporating International Property Measurement Standards (IPMS2 Residential). © nixecom 2025.  
Produced for Drewery. REF: 1232787

### Drewery Property Consultants

128 Station Road  
Sidcup  
Kent  
DA15 7AF

### Contact

020 8269 6605  
info@drewery.co.uk  
www.drewery.co.uk

**Agents Note:** Whilst every care has been taken to prepare these particulars, they are for guidance purposes only. All measurements are approximate and are for general guidance purposes only and whilst every care has been taken to ensure their accuracy, they should not be relied upon and potential buyers/tenants are advised to recheck the measurements.