



**Howard Avenue**

Bexley  
DA5 3BE

**Freehold**

3 bedroom end of terrace house  
COMPLETION MUST BE AFTER 1ST OCTOBER 2025  
Easy access to local shops and schools  
Popular location close to Albany Park station  
Chain Free  
Garage to rear and hardstanding to front  
Spacious lounge/diner







### FULL DESCRIPTION

Offered for sale is this spacious 3 bedroom end of terrace house. Completion on this property cannot take place before the 1st October 2025, but we do feel it could be a great family home. It sits in a popular location for schools as well as local shops, parks and Albany Park train station.

The property comprises of: Entrance hall, a spacious lounge/diner, a rear kitchen and utility room. The first floor has three good sized bedrooms with a small en-suite to bedroom one and a family bathroom.

Externally there is a rear garden, garage and hard standing to the front. \* CHAIN FREE \*



### Directions

From our office turn right into Station Road and at the traffic lights turn right into Hurst Road. At the roundabout go straight across and take the first left into Shirley Avenue and first right into Howard Avenue. Closest Stations: Albany Park (0.47 mi) Sidcup (0.84 mi) Bexley (1.19 mi) Closest Schools: Hurst Primary School (0.29 mi) Sherwood Park Primary School (0.54mi) Hurstmere School (0.35 mi) Blackfen School for Girls (0.61 mi)





Local Authority  
Council Tax Band  
EPC Rating

Bexley London Borough Council

E  
D

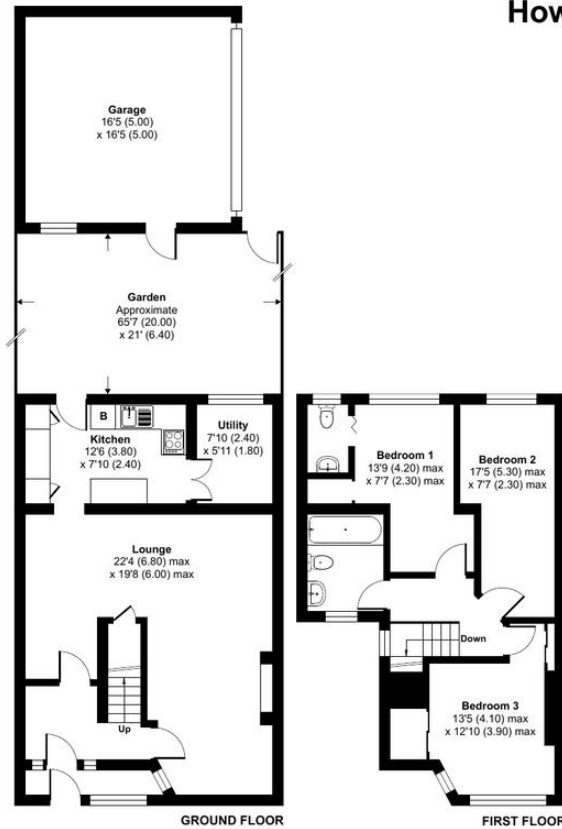
## Howard Avenue, Bexley, DA5

Approximate Area = 1111 sq ft / 103.2 sq m

Garage = 269 sq ft / 25 sq m

Total = 1380 sq ft / 128.2 sq m

For identification only - Not to scale



Floor plan produced in accordance with RICS Property Measurement 2nd Edition, Incorporating International Property Measurement Standards (IPMS2 Residential). © nichecom 2025. Produced for Drewery. REF: 1269969

**Drewery Property Consultants**  
128 Station Road  
Sidcup  
Kent  
DA15 7AF

**Contact**  
020 8269 6605  
info@drewery.co.uk  
www.drewery.co.uk

**Agents Note:** Whilst every care has been taken to prepare these particulars, they are for guidance purposes only. All measurements are approximate and are for general guidance purposes only and whilst every care has been taken to ensure their accuracy, they should not be relied upon and potential buyers/tenants are advised to recheck the measurements.

