



Medlar House
Longlands Road
Sidcup
DA15 7LY

Leasehold

Offered for sale is this large 2 bedroom balcony apartment that sits just a short walk from Sidcup train station and its variety of local shops, coffee shops and restaurants. This large property would make a great first time buy as it offers plenty of space, comes with allocated parking and a lease over 900 years.

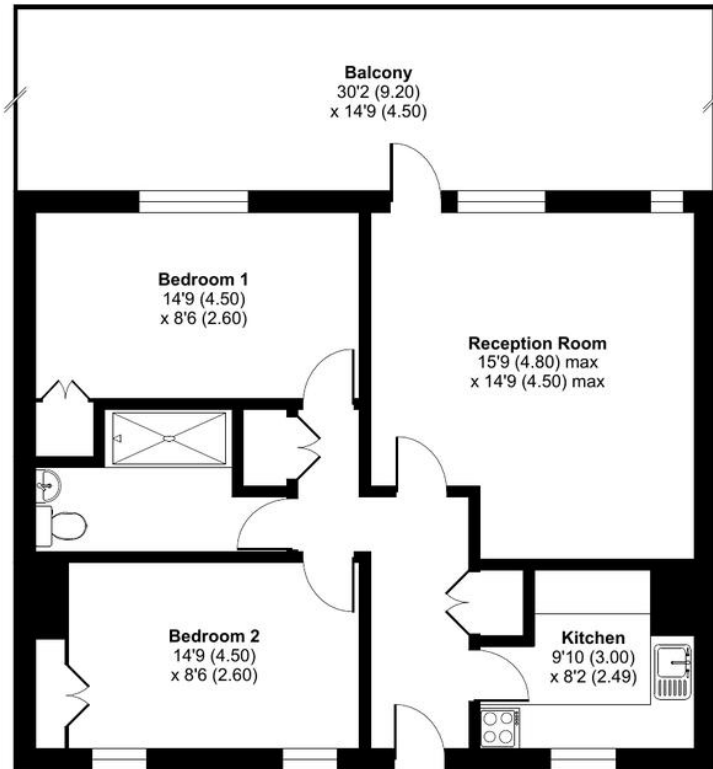
It briefly comprises of: Entrance hall with storage cupboards, a kitchen that offers a semi-open plan feel to the lounge which has direct access out onto your own large private balcony. The apartment has 2 double bedrooms and a spacious shower room that could easily be converted to house a bath instead of the current shower cubicle. Externally you have your own large private balcony, there are communal grounds, allocated parking and a private storage lock up. There are also visitors parking permits available.

Local Authority Bexley London Borough
Council
Council Tax Band C
EPC Rating E

Lease 957 years remaining
Service Charge £2,618.54 per annum
Ground Rent TBC

Longlands Road, DA15

Approximate Area = 738 sq ft / 68.6 sq m
For identification only - Not to scale



FIRST FLOOR



Drewery Property Consultants
128 Station Road
Sidcup
Kent
DA15 7AF

Contact
020 8269 6605
info@drewery.co.uk
www.drewery.co.uk

Agents Note: Whilst every care has been taken to prepare these particulars, they are for guidance purposes only. All measurements are approximate and are for general guidance purposes only and whilst every care has been taken to ensure their accuracy, they should not be relied upon and potential buyers/tenants are advised to recheck the measurements.