

£1,350 pcm

Cedarwood Place, Maylands Drive, Sidcup, Kent, DA14 4BF



- **MODERN & WELL PRESENTED 1 BEDROOM TOP FLOOR APARTMENT**
- **GAS CENTRAL HEATING, DOUBLE GLAZING, NEUTRAL DECOR**
- **SPACIOUS LIVING ROOM WITH JULIETTE BALCONY**
- **MODERN KITCHEN WITH APPLIANCES**
- **DOUBLE SIZE BEDROOM WITH CARPET**
- **MODERN BATHROOM WITH OVERBATH SHOWER**
- **ALLOCATED PARKING IN SECURE CAR PARK**
- **COMMUNAL TERRACE**

To view all our homes: www.drewery.co.uk





MODERN & WELL PRESENTED 1 BEDROOM TOP FLOOR APARTMENT: UNFURNISHED

A modern and well presented 1 bedroom top floor apartment set within a modern gated development. Situated in a residential location and close to all local amenities including: shops, schools, bus routes and within easy access of Albany Park mainline railway station.

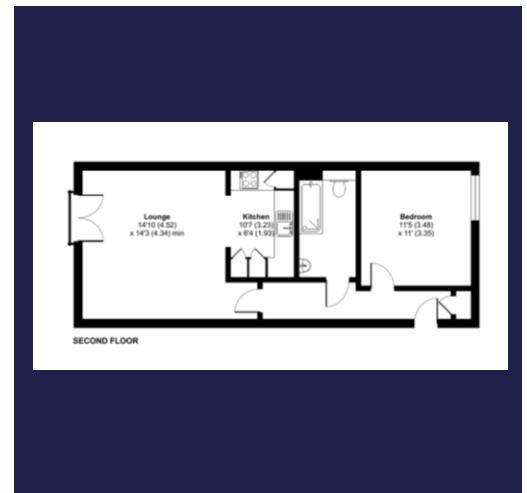
The property benefits from gas central heating, double glazed windows, video entry phone, allocated parking and a communal terrace.

The accommodation comprises: Entrance hallway. Spacious living room with wood laminate flooring and windows to front opening to a Juliette balcony. Modern kitchen with a range of wall and base units, work surfaces, stainless steel sink with drainer, electric oven, gas hob, extractor, microwave, washing machine, dishwasher and fridge / freezer. Double size bedroom with carpet and window to rear. Modern bathroom with hand basin, bath with overhead shower, heated towel rail and W.C. Externally there is a communal roof terrace and 1 x allocated in parking space.

Available immediately.

Restriction: no pets, smokers, children or students.

Would suit a professional couple or single person.



Energy Efficiency Rating C
(80/80) EIR -/-

If you would like to view please contact Drewery Property Consultants on 020 8269 6600

These particulars are intended to give a fair description of the property but their accuracy cannot be guaranteed. Intending tenants should not rely on them as statements of representation of fact, but must satisfy themselves by inspection or otherwise as to their accuracy. All measurements quoted are approximate. None of the appliances/services have been tested by ourselves.

*Important - Admin fees apply per applicant. Please visit our website www.drewery.co.uk (information for tenants - Fees & other costs) or contact our staff.