



Sandalwood House
Longlands Road
Sidcup
DA15 7NB

Leasehold

This large one double bedroom top floor apartment has been well presented by the current owner and is offered chain free and with long lease. The property benefits from a large hallway with plenty of storage, living/dining room with three double glazed windows, modern kitchen, large bedroom and modern shower room. The property benefits from an allocated parking space and communal grounds.

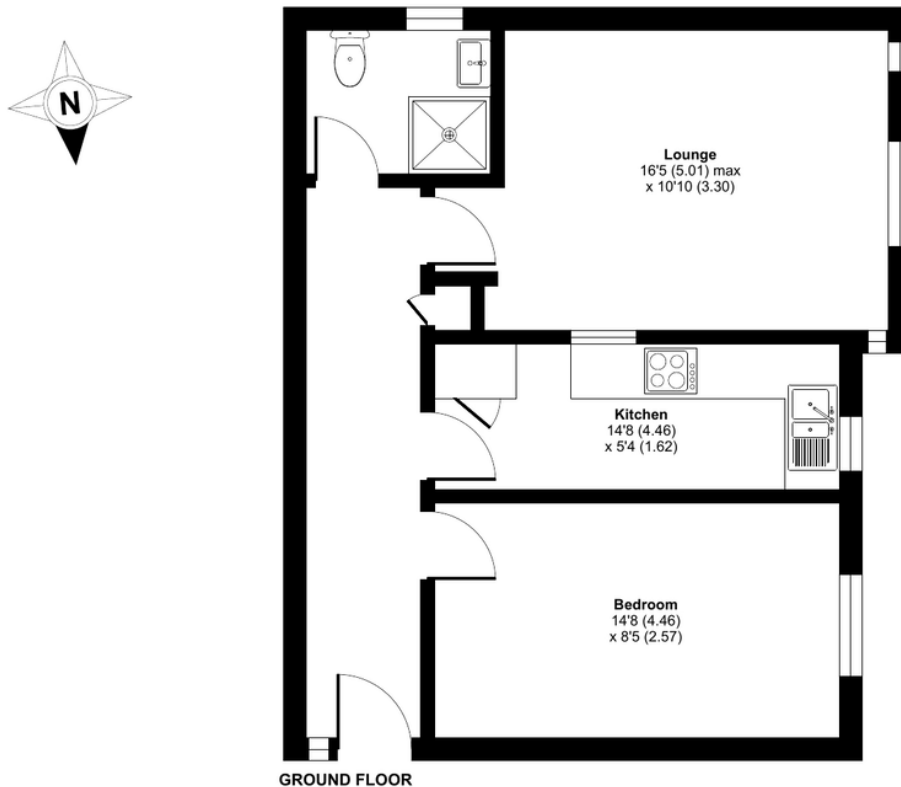
Conveniently situated for Sidcup station and all the local coffee bars, restaurants and local shops. Your earliest internal viewing is highly recommended.

Local Authority Bexley London Borough
Council
Council Tax Band B
EPC Rating E

Lease 956 years remaining
Service Charge £2,196 per annum
Ground Rent none

Sandalwood House, Longlands Road, Sidcup, DA15

Approximate Area = 511 sq ft / 47.4 sq m
For identification only - Not to scale



Drewery Property Consultants
128 Station Road
Sidcup
Kent
DA15 7AF

Contact
020 8269 6605
info@drewery.co.uk
www.drewery.co.uk

Agents Note: Whilst every care has been taken to prepare these particulars, they are for guidance purposes only. All measurements are approximate and are for general guidance purposes only and whilst every care has been taken to ensure their accuracy, they should not be relied upon and potential buyers/tenants are advised to recheck the measurements.

