



Blenheim Court

Sidcup
DA14 6QQ

Leasehold

A stunning two-bedroom top floor maisonette occupying the whole top floor in this detached property, this property is offered in excellent condition throughout and warrants your earliest viewing, the property is located close to New Eltham mainline station and Sidcup High Street.

The property briefly comprises: Lounge, kitchen, 2 bedrooms and bathroom and externally has its own private garden.

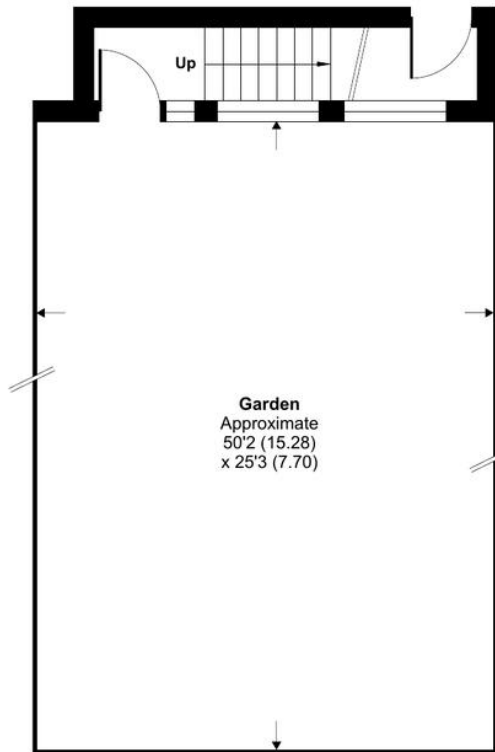


Local Authority Bexley London Borough
Council
Council Tax Band C
EPC Rating D

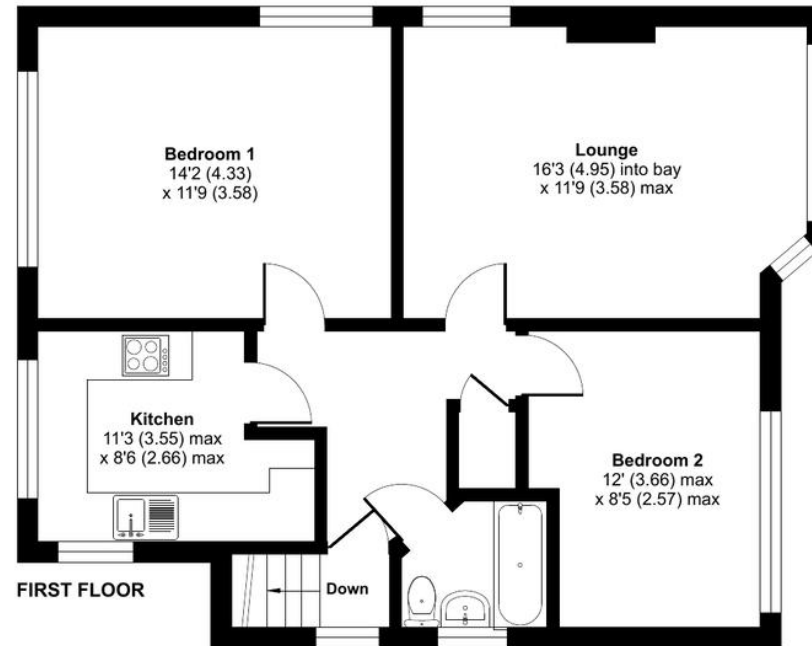
Lease 102 years remaining
Service Charge none
Ground Rent £50 per annum

Blenheim Court, Sidcup, DA14

Approximate Area = 738 sq ft / 68.6 sq m
For identification only - Not to scale



GROUND FLOOR



FIRST FLOOR



Drewery Property Consultants
128 Station Road
Sidcup
Kent
DA15 7AF

Contact
020 8269 6605
info@drewery.co.uk
www.drewery.co.uk

Agents Note: Whilst every care has been taken to prepare these particulars, they are for guidance purposes only. All measurements are approximate and are for general guidance purposes only and whilst every care has been taken to ensure their accuracy, they should not be relied upon and potential buyers/tenants are advised to recheck the measurements.