



Northcote Road
Sidcup
DA14 6PW

Freehold

Offered for sale is this deceptively spacious and well maintained 2 bedroom period property. The house does require some modernising but has the benefit of having an updated kitchen and shower room making it what we feel would be a great first house for someone.

It briefly comprises: entrance hall, a large through lounge featuring a lounge and dining area, well presented rear kitchen that overlooks and provides access to the garden and then the first floor of this property has two good sized bedrooms and a family shower room.

Externally the house has a small front garden and a good sized rear garden featuring borders and an artificial lawn.

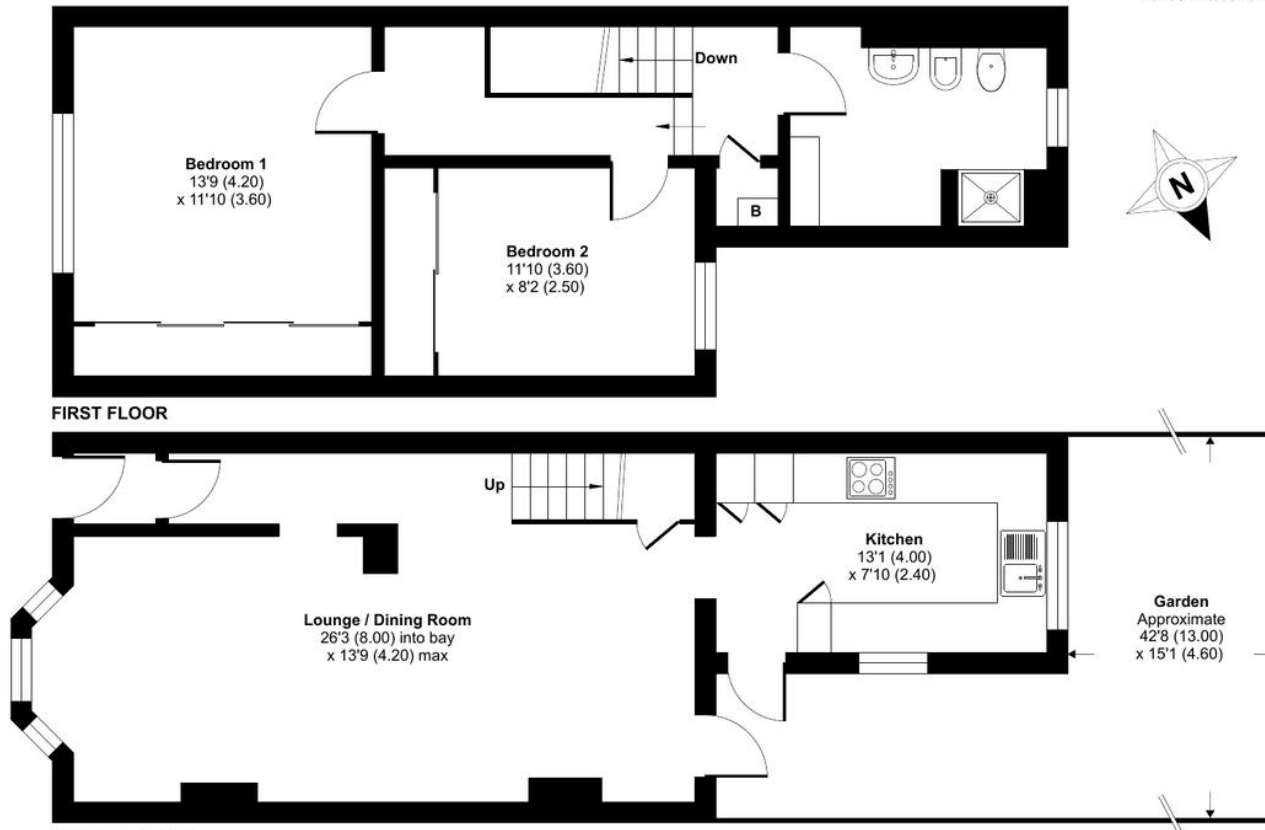


Local Authority Bexley London Borough
Council
Council Tax Band D
EPC Rating D

Northcote Road, Sidcup, DA14

Approximate Area = 906 sq ft / 84.1 sq m

For identification only - Not to scale



Drewery Property Consultants
128 Station Road
Sidcup
Kent
DA15 7AF

Contact
020 8269 6605
info@drewery.co.uk
www.drewery.co.uk

Agents Note: Whilst every care has been taken to prepare these particulars, they are for guidance purposes only. All measurements are approximate and are for general guidance purposes only and whilst every care has been taken to ensure their accuracy, they should not be relied upon and potential buyers/tenants are advised to recheck the measurements.