

£1,400 pcm

The Firs, Longlands Road, Sidcup, DA15 7LG



- WELL PRESENTED 1 BEDROOM GROUND FLOOR FLAT
- CLOSE TO ALL LOCAL AMENITIES
- GAS CENTRAL HEATING, DOUBLE GLAZING & NEUTRAL DECOR
- SPACIOUS LIVING ROOM WITH BAY WINDOW TO FRONT
- MODERN KITCHEN WITH A RANGE OF WALL & BASE UNITS
- DOUBLE SIZE BEDROOM WITH BUILT IN WARDROBE
- MODERN BATHROOM WITH OVERBATH SHOWER
- COMMUNAL GARDENS TO THE REAR
- GARAGE EN BLOCK PROVIDING OFF STREET PARKING

To view all our homes: www.drewery.co.uk





WELL PRESENTED 1 BEDROOM GROUND FLOOR FLAT: UNFURNISHED / PART FURNISHED

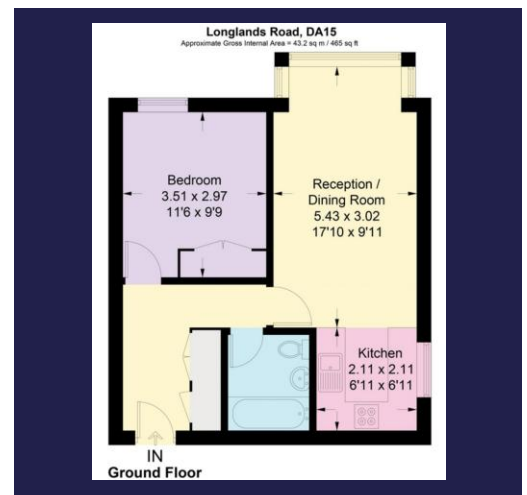
A well presented 1 bedroom purpose built ground floor flat. Situated in a popular residential location within walking distance to all local amenities including shops, restaurants, local parks, bus routes and Sidcup mainline train station.

The property benefits from gas central heating, double glazing, and neutral décor throughout.

The accommodation comprises: Communal entrance. Entrance hall with storage cupboards. Spacious living room with a large bay window to front. Modern kitchen fitted with a range of wall and base units, stainless steel sink with drainer, electric oven, hob, extractor, fridge and washing machine. Double size bedroom with built in wardrobe. Modern bathroom with hand basin, bath with over bath shower and W.C. Externally there are communal gardens to the rear . There is also a garage en bloc providing off street parking.

The property is available in early December.

Restrictions: no pets, smokers or students.



Energy Efficiency Rating D.
(55/75)

If you would like to view please contact Drewery Property Consultants on 020 8269 6600

These particulars are intended to give a fair description of the property but their accuracy cannot be guaranteed. Intending tenants should not rely on them as statements of representation of fact, but must satisfy themselves by inspection or otherwise as to their accuracy. All measurements quoted are approximate. None of the appliances/services have been tested by ourselves.

*Important -Admin fees apply per applicant. Please visit our website www.drewery.co.uk (information for tenants - Fees & other costs) or contact our staff.