





Bayview, Rocombe Close

Torquay, Torquay

Presenting Bayview.

This beautifully extended 3 bedroom bungalow located in a highly sought-after area on the outskirts of Torquay, boasting stunning panoramic views of the sea and town.

Upon entering, you are greeted by an inviting entrance porch leading into a convenient cloakroom/WC. The bay windowed sitting room showcases the property's most outstanding feature - breathtaking views that can be enjoyed from the comfort of your own home.

The heart of this home is the quality modern fitted kitchen/dining room, complete with built-in appliances for added convenience. This space is perfect for entertaining, offering a seamless flow for both cooking and dining experiences with an abundance of light throughout. The property features three generously sized double bedrooms, providing ample space for relaxation and privacy. The modern fitted shower room/WC offers a touch of luxury with its contemporary design and fixtures.

Step outside to discover the well-maintained front and rear gardens, landscaped to perfection with access to a rear walkway ideal for dog walking.

Convenience is key with a single garage and Driveway, ensuring ample space for vehicles and storage.



GARDEN

The bungalow sits in the middle of a large plot with beautifully matured gardens to both the front and rear. A rear gate gives access to the fields behind which are great for dog walking.

GARAGE

OFF STREET

DRIVEWAY



Bayview, Rocombe Close

Torquay, Torquay

The property is situated in a desirable location close to local amenities including a convenience store with post office, vets and Barton parade of shops. An array of schools are also within close proximity with easy access to the bypass which connects to Newton Abbot, Exeter and beyond. Torquay town centre and sea front are both approximately within 2.5 miles distance with an array of shops, facilities and amenities. There is easy access to Watcombe Beach, Maidencombe and the South West coast path.

Council Tax band: D

Tenure: Freehold

EPC Energy Efficiency Rating: C

EPC Environmental Impact Rating: D

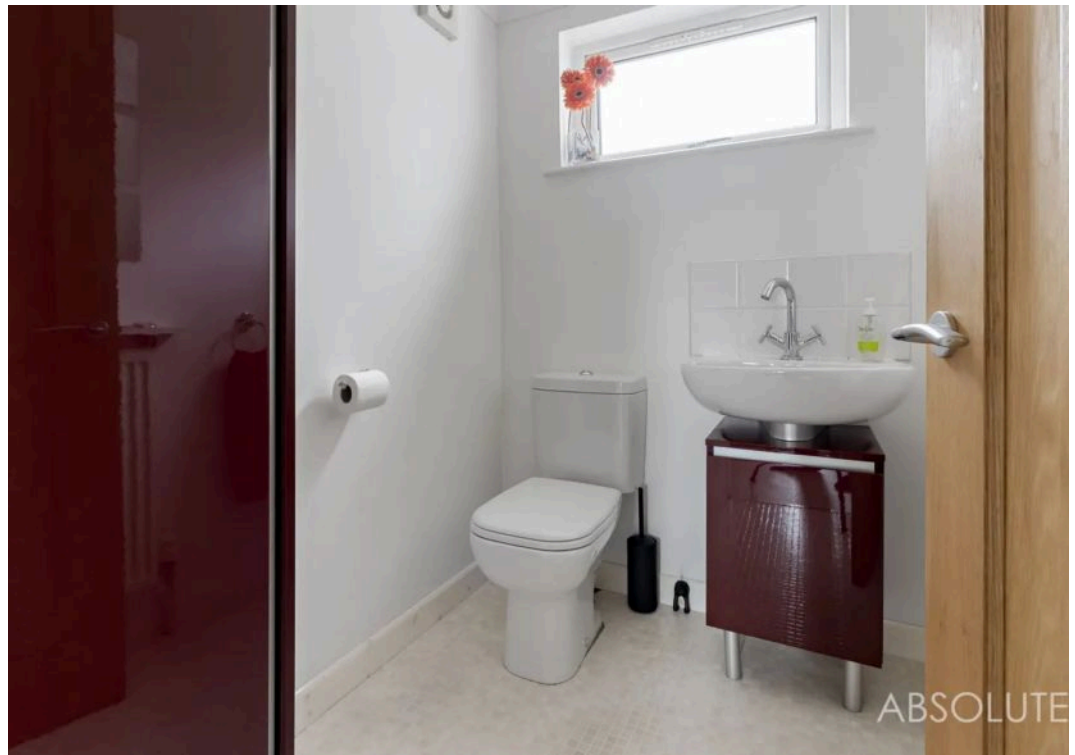


ABSO

ABSO



ABSOLUTE



Ground Floor



Total area: approx. 102.8 sq. metres (1106.6 sq. feet)

Approx
Plan produced using PlanUp.

Bayview , 1 Rocombe Close, Torquay





Absolute Sales & Lettings

Absolute Sales & Lettings Ltd, 13 Ilsham Road - TQ1 2JG

01803 214214

torquay@movewithabsolute.co.uk

movewithabsolute.co.uk/

