



Gillard Road, Brixham – TQ5 9EP

Guide Price £145,000





Gillard Road

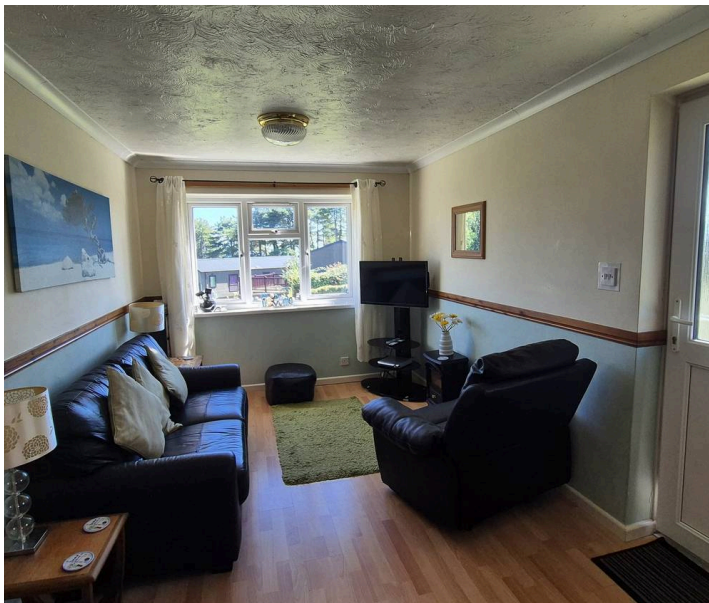
Brixham

Semi-detached chalet bungalow in stunning setting. Open plan kitchen/diner, 2 double bedrooms, park amenities, prime location. Ideal for permanent residence (50 weeks) or holiday rental investment.

Council Tax band: A

Tenure: Leasehold

- 50 weeks of residency
- Views across Berry Head and out to sea
- Great investment opportunity
- Full use of park amenities
- Open plan
- Holiday style semi-detached chalet bungalow



Gillard Road

Brixham

Located in the Berry head area of Brixham, this bungalow is not too far away from pristine beaches, coastal walks and Brixham harbour. Allowing you access to shops, amenities and bus routes. You can simply hop on a bus giving you access to Paignton, Torquay or the beautiful seaside village of Kingswear.

Absolute Sales & Lettings

Absolute Sales & Lettings, 36 Fore Street - TQ5 8DZ

01803 214214

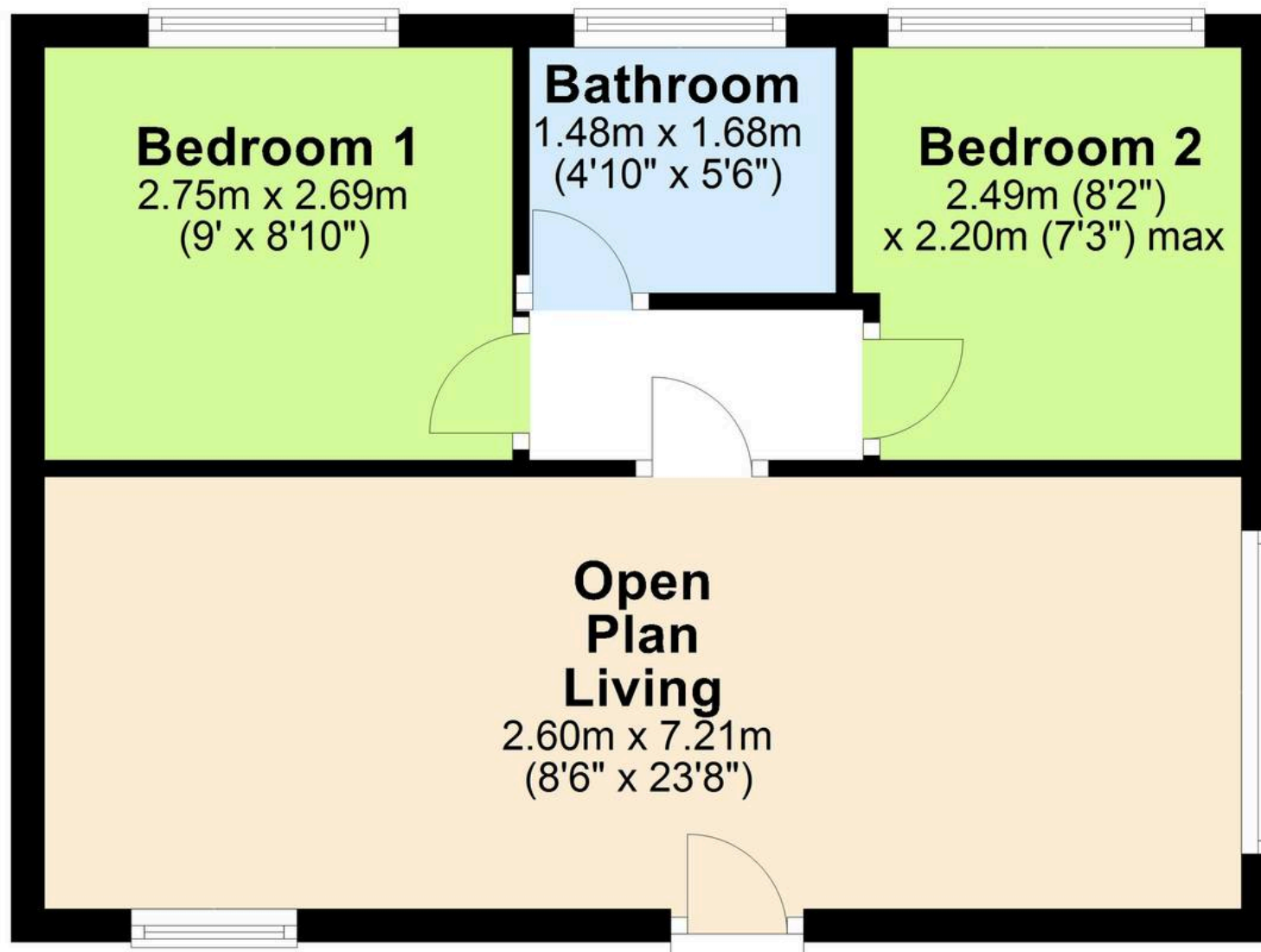
brixham@movewithabsolute.co.uk

movewithabsolute.co.uk/



Floor Plan

Approx. 37.2 sq. metres (400.4 sq. feet)



Total area: approx. 37.2 sq. metres (400.4 sq. feet)

