



48 Burrridge Road, Torquay – TQ2 6LY
£300,000





48 Burr ridge Road

Torquay, Torquay

New listing on Burr ridge Road, Higher Chelston! Stunning 1930s semi-detached with timeless character. Spacious rooms filled with light. Modern kitchen, 3 bedrooms, landscaped garden, garage, and no chain.

Council Tax band: C

Tenure: Freehold

- Beautifully presented 3 bedroom 1930's semi detached house in Higher Chelston
- First time on the market in over 50 years. It has been owned by the same family for years
- No onward chain
- Extended modern kitchen/breakfast room
- Contemporary bathroom suite with shower over
- Bay fronted house with lovely elevated views
- Spacious lounge with corner window, feature fireplace and engineered oak flooring
- Separate Dining Room with garden views
- 2 large doubles, the main bedroom having a bay window and lovely views
- Stunning landscapes rear garden with greenhouse, updated raised patio with power
- Large driveway and single garage



48 Burrridge Road

Torquay, Torquay

Burrridge Road is in a sought after residential location being convenient for the town, seafront and harbour and close to the village style communities centred around Walnut Road and Old Mill Road where there is an excellent range of amenities. The 450 acre Cockington Park with its preserved thatched cottages, tea rooms, historic buildings and listed pub is close by and can be explored through a network of paths and cycleways. This location also allows easy access to the ring road, Torbay Hospital, edge of town retail parks and a range of good schools including the Boy's and Girl's Grammar Schools.

Absolute Sales & Lettings

Absolute Sales & Lettings Ltd, 13 Ilsham Road - TQ1 2JG

01803 214214

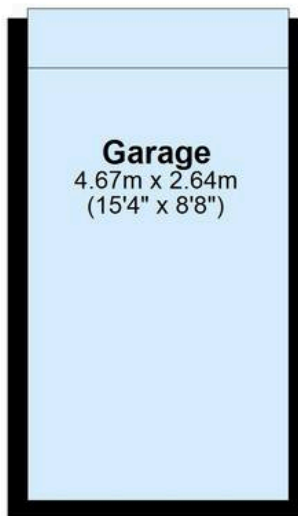
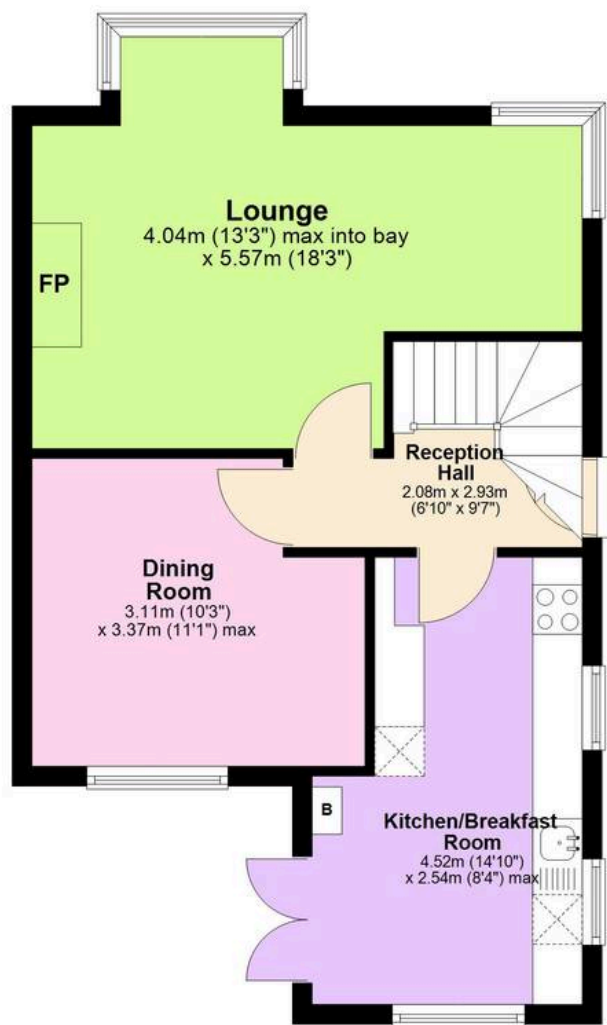
torquay@movewithabsolute.co.uk

movewithabsolute.co.uk/



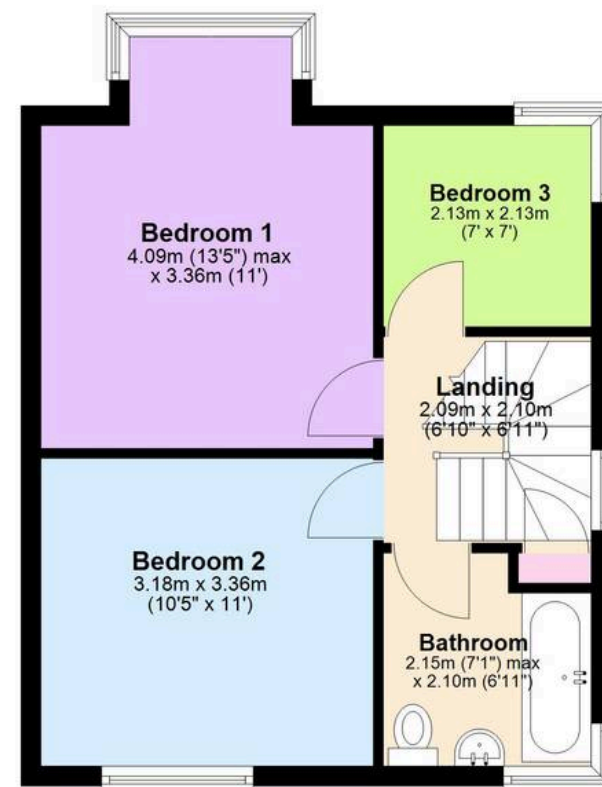
Ground Floor

Approx. 56.0 sq. metres (602.8 sq. feet)



First Floor

Approx. 38.0 sq. metres (409.1 sq. feet)



Total area: approx. 94.0 sq. metres (1011.9 sq. feet)