



20 Lyncombe Crescent, Higher Lincombe Road, Torquay – TQ1 2HP

£265,000





20 Lyncombe Crescent, Higher Lincombe Road

Torquay

Luxurious two-bedroom apartment in sought-after location with stunning sea views. Private terrace, communal gardens, swimming pool. Modern kitchen, ample living space, two bedrooms and bathrooms. Underground garage with lift access to all floors. Bask in seaside living and nature activities.

Council Tax band: D

Tenure: Leasehold

EPC Energy Efficiency Rating: B

- Sought after location in The Lincombes
- Enjoying a Southerly aspect
- Private underground garage with electric door and lift access to all floors
- Close to Daddyhole Plain and Meadfoot
- Private balcony with stunning views
- Two large double bedrooms and bathrooms
- Generous square footage throughout
- Well maintained communal gardens with residents swimming pool
- Incredible sea views



20 Lyncombe Crescent, Higher Lincombe Road

Torquay

This desirable property is situated in Lyncombe Crescent, a sought-after residential area in Torquay. The apartment is within walking distance to Wellswood village with its array of boutique shops, local cafes and restaurants. Just a short drive away is Meadfoot Beach and lovely woodland walks through Ilsham Valley. The property's proximity to the bypass which connects to Newton Abbot, Exeter and beyond, ensures easy access to explore the wider area or enjoy a stress-free commute. Torquay retains the feel of a traditional seaside town with its stunning coastline, iconic palm trees, sandy beaches and historic pier, all enhanced by the international Marina and a delightful array of shops, galleries and cafes. There are many bars and restaurants dotted along the waterfront offering the opportunity to eat and drink al-fresco and to sample some of the finest seafood from nearby Brixham. The area has many beaches and there are many opportunities to fish, kayak, paddle board or sail with other sports including golf, tennis, bowls and cricket available close by.

Absolute Sales & Lettings

Absolute Sales & Lettings Ltd, 13 Ilsham Road - TQ1 2JG

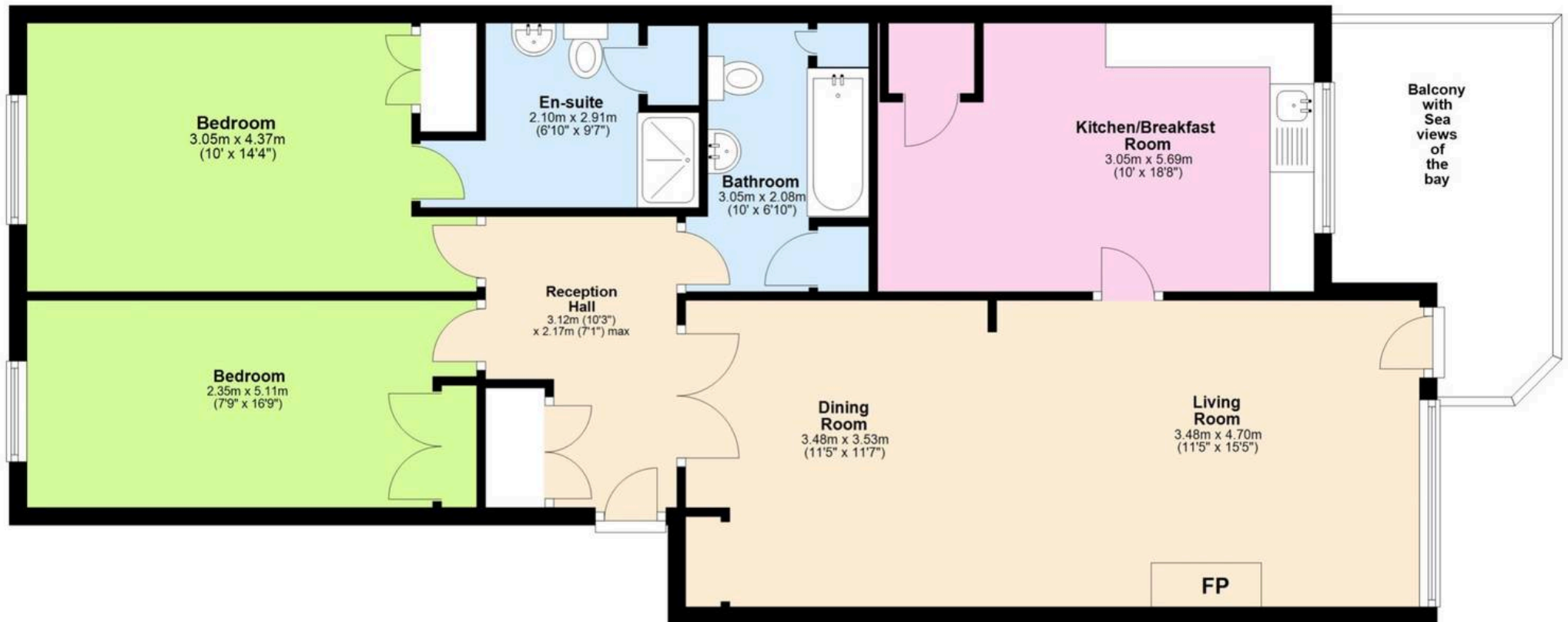
01803 214214

torquay@movewithabsolute.co.uk

movewithabsolute.co.uk/



Second Floor with lift



Total area: approx. 91.6 sq. metres (986.2 sq. feet)

Approx
Plan produced using PlanUp.

