



Flat 26, Meadwood St. Marks Road, Torquay – TQ1 2EH
£299,950





Flat 26

Meadwood St. Marks Road, Torquay

Rare two-bedroom apartment in sought-after coastal location. Spectacular sea views from spacious lounge and enclosed balcony. High-spec kitchen, modern bathrooms, ample storage. Gas heating, double glazing, communal gardens, parking, and garage. Tranquil retreat for refined coastal living.

Council Tax band: D

Tenure: Leasehold

EPC Energy Efficiency Rating: C

EPC Environmental Impact Rating: C

- Much sought after residential location
- Spacious lounge/dining room enjoying superb sea and coastal views
- Enclosed balcony
- Quality modern fitted kitchen with built in appliances
- Single garage in a nearby block
- Two double bedrooms with fitted wardrobes
- Resident and visitor parking
- Quality modern fitted bathroom/WC with spa bath
- Superbly maintained communal gardens
- Gas central heating and uPVC double glazing



Flat 26

Meadwood St. Marks Road, Torquay

The property occupies an enviable residential position within approximately 1/4 of a mile from Meadfoot Beach and Wellswood Village with its array of shops and facilities. Torquay sea front and deep water marina are both within approximately 1/2 a mile distance.

Absolute Sales & Lettings

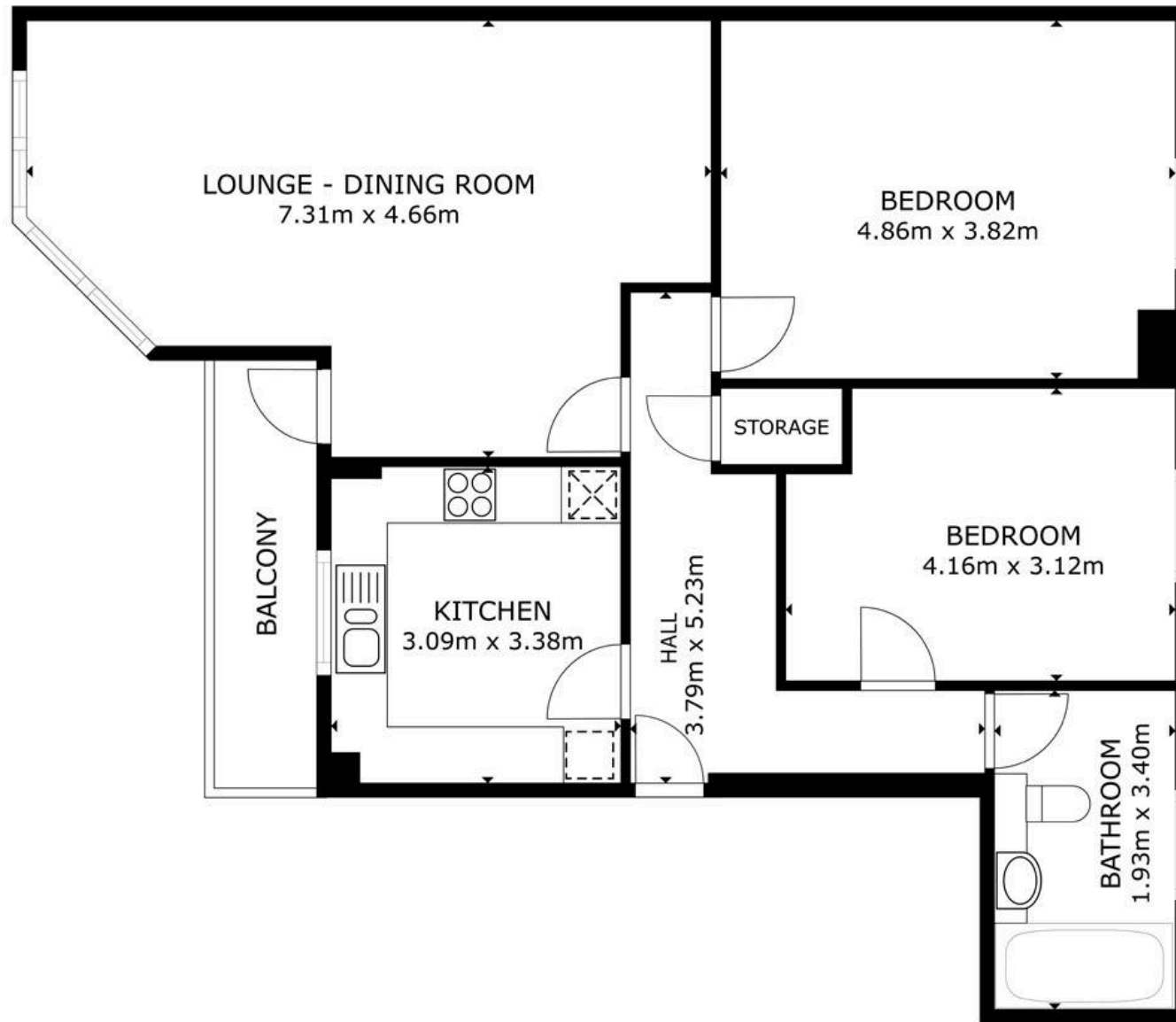
Absolute Sales & Lettings Ltd, 13 Ilsham Road - TQ1 2JG

01803 214214

torquay@movewithabsolute.co.uk

movewithabsolute.co.uk/





GROSS INTERNAL AREA
FLOOR PLAN 88.0 m²
EXCLUDED AREAS : BALCONY 5.0 m²
TOTAL : 88.0 m²

SIZES AND DIMENSIONS ARE APPROXIMATE, ACTUAL MAY VARY.

