



Astoria Court, Belle Vue Road, Paignton

Paignton

£280,000

ABSOLUTE



Astoria Court, Belle Vue Road

Paignton

Close to Paignton Harbour, "The Orangery" is a charming 2 bed house with unique design, open plan living, modern bathroom, garden, and 2 parking spaces. Enjoy serene living near vibrant Paignton Harbour.

Council Tax band: TBD

Tenure: Freehold

- The orangery is a 2 bed property
- Open plan living room with high dome ceiling
- Clockroom/WC
- Reverse level living
- Two double bedrooms
- Modern four piece bathroom
- Lawned garden
- Two allocated parking spaces
- A new select development close to Paignton Harbour



Astoria Court, Belle Vue Road

Paignton

Astoria Court is located in the highly desirable location of Roundham, noted for its picturesque harbour side, thatched cottages and village ambience. The area offers restaurants, cafes and bars plus access to the South West coast path and blue flag beaches. A haven for those that love to paddle board, sail or enjoy cycling or walking the promenade to Paignton or cliff path to Goodrington.

Absolute Sales & Lettings

Absolute Sales & Lettings, 27 Hyde Road - TQ4 5BP

01803 890110

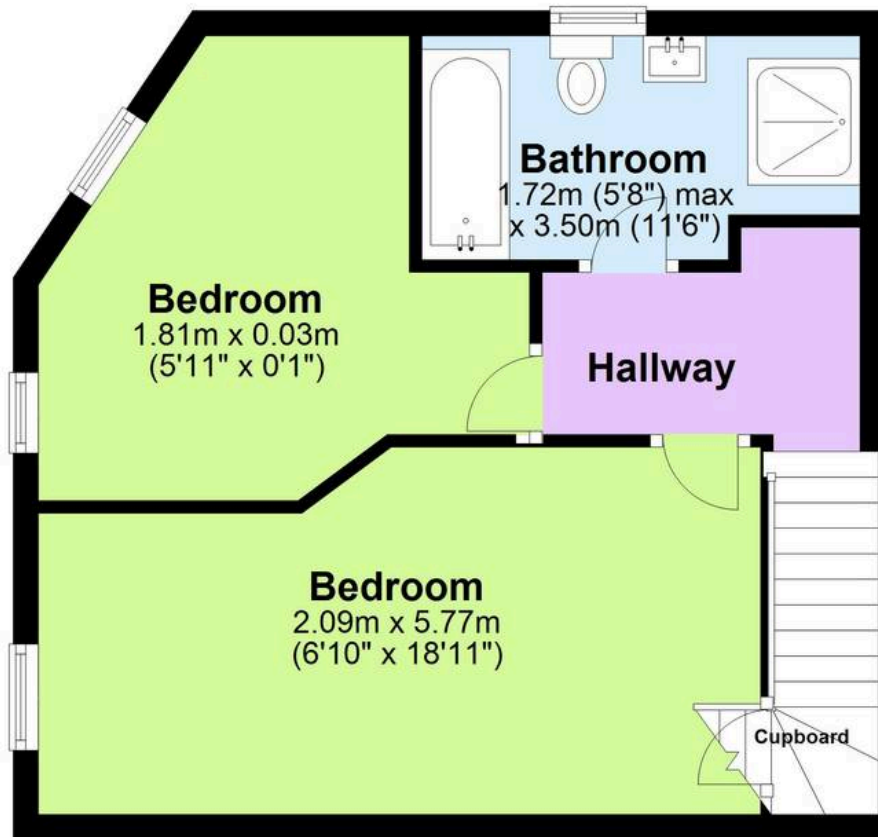
paignton@movewithabsolute.co.uk

<http://www.movewithabsolute.co.uk>



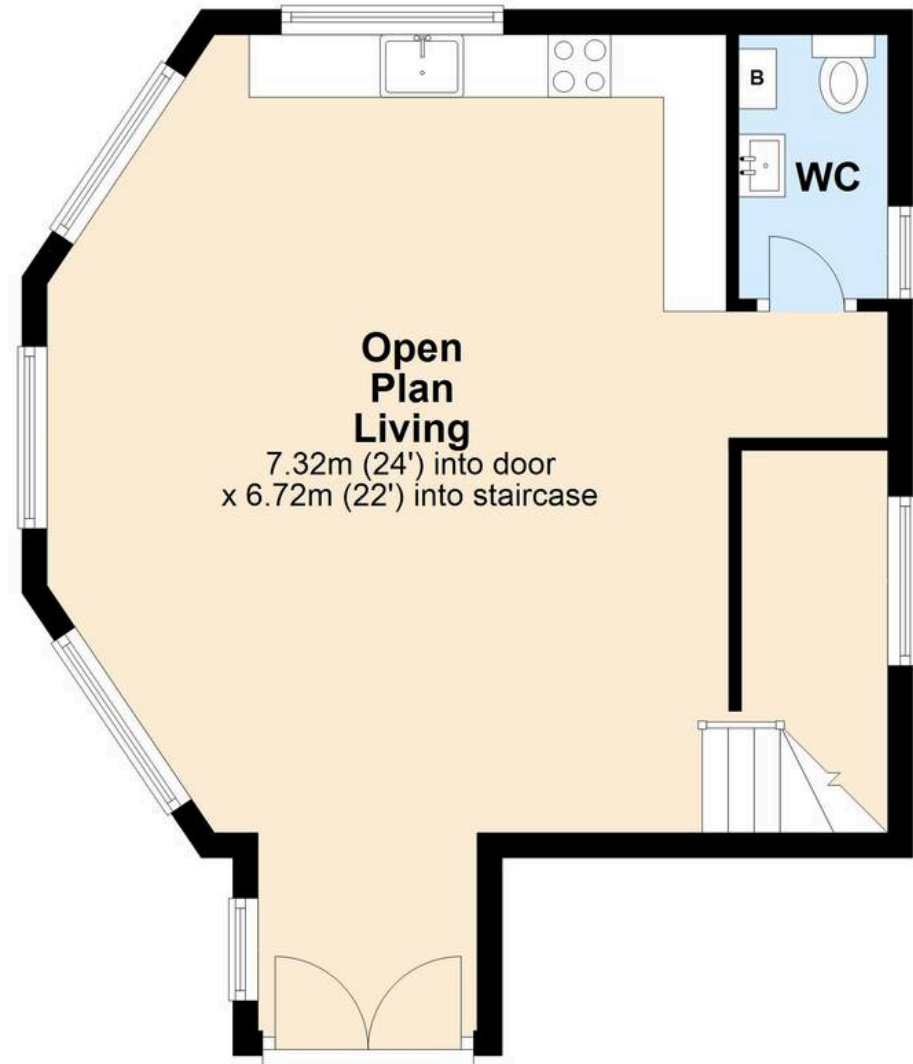
Lower Ground Floor

Approx. 38.9 sq. metres (418.5 sq. feet)



Ground Floor

Approx. 42.9 sq. metres (461.9 sq. feet)



Total area: approx. 81.8 sq. metres (880.4 sq. feet)

Approx
Plan produced using PlanUp.

