



58a Shirburn Road, Torquay – TQ1 4HR
£235,000





58a Shirburn Road

Torquay

Charming 3-bed end terrace with bay window sitting room, kitchen/diner, off-road parking, under-house storage, external office/gym, and enclosed rear garden with decking.

Council Tax band: C

Tenure: Freehold

EPC Energy Efficiency Rating: C

- A spacious three bed end terrace house
- Downstairs cloakroom/WC
- Bay windowed sitting room
- Kitchen/diner with built in appliances
- Four piece bathroom/WC
- Gas central heating and uPVC double glazing
- Driveway parking for one car
- Useful external room and under house storage
- Easy to maintain enclosed rear garden
- No chain



58a Shirburn Road

Torquay

The property occupies a popular residential position within close proximity to local schools and local shops on St Marychurch Road. Torquay town centre and sea front are both within approximately 1 mile distance. There is easy access to both Grammar schools and Torbay Hospital. An internal inspection is highly recommended to appreciate the accommodation on offer.

Absolute Sales & Lettings

Absolute Sales & Lettings Ltd, 13 Ilsham Road - TQ1 2JG

01803 214214

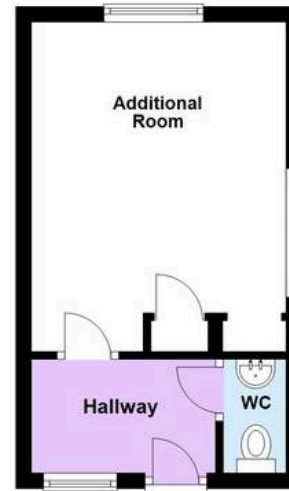
torquay@movewithabsolute.co.uk

movewithabsolute.co.uk/



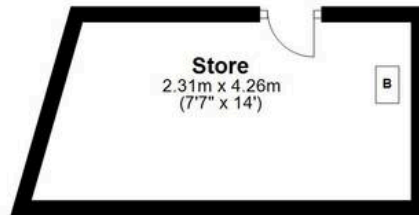
Ground Floor

Approx. 65.7 sq. metres (707.7 sq. feet)



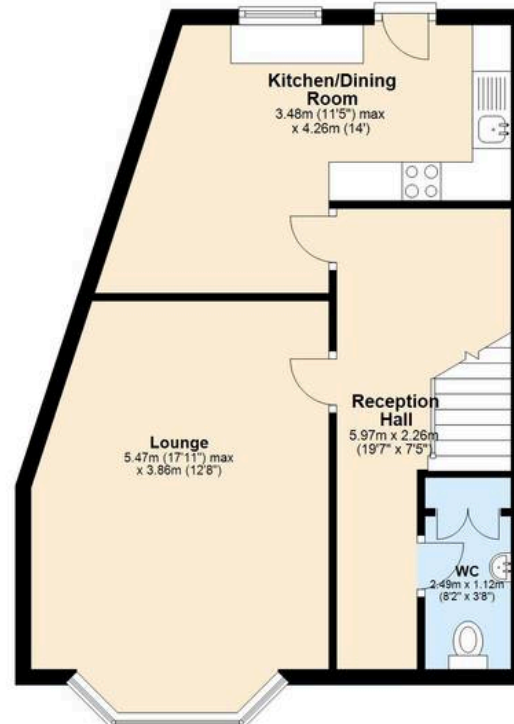
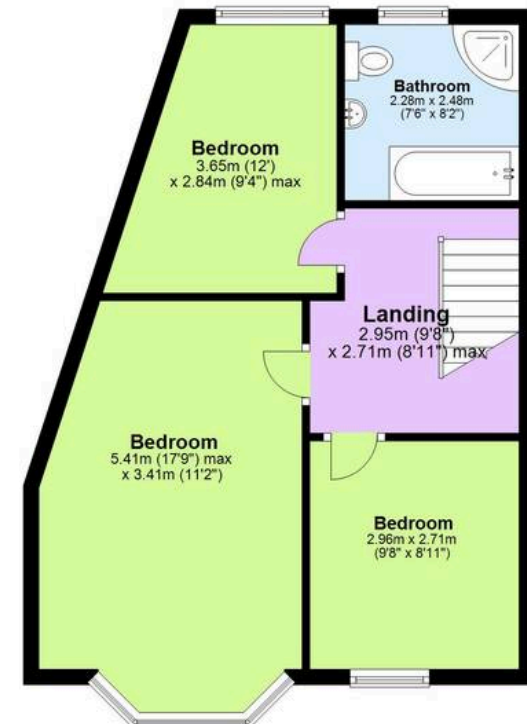
Garden Floor

Approx. 10.6 sq. metres (114.2 sq. feet)



First Floor

Approx. 46.5 sq. metres (500.1 sq. feet)



Total area: approx. 122.8 sq. metres (1322.0 sq. feet)

Approx
Plan produced using PlanUp.

