



4 Waterleat Avenue, Paignton

Paignton

Guide Price **£250,000**

ABSOLUTE



4 Waterleat Avenue

Paignton, Paignton

A 3 bedroom semi-detached bungalow with lovely open countryside views. Low maintenance gardens. Gas CH & uPVC double glazing. Sun room/utility. No onward chain. Council Tax band: C

Tenure: Freehold

- Semi detached bungalow
- Three double bedrooms
- Spacious lounge with lovely open views
- Rear sun room/utility
- Separate cloakroom/WC
- Gas central heating & uPVC double glazing
- Tiered rear garden, also enjoying the open views
- No onward chain
- EPC - TBC. Council tax band - C



4 Waterleat Avenue

Paignton, Paignton

The property is located in a popular residential area being close to local schools, shops and bus services. Paignton town centre and sea front are approximately 2 miles away, offering a choice of shops, restaurants and activities. Paignton has a train station, which links to the mainland station in Newton Abbot. There is a choice of lovely beaches, along with the stunning coastal walk which links the nearby towns of Brixham and Torquay. The historical market town of Totnes with its wonderful choice of small independent shops is approximately 14 miles away.

Absolute Sales & Lettings

Absolute Sales & Lettings, 27 Hyde Road - TQ4 5BP

01803 890110

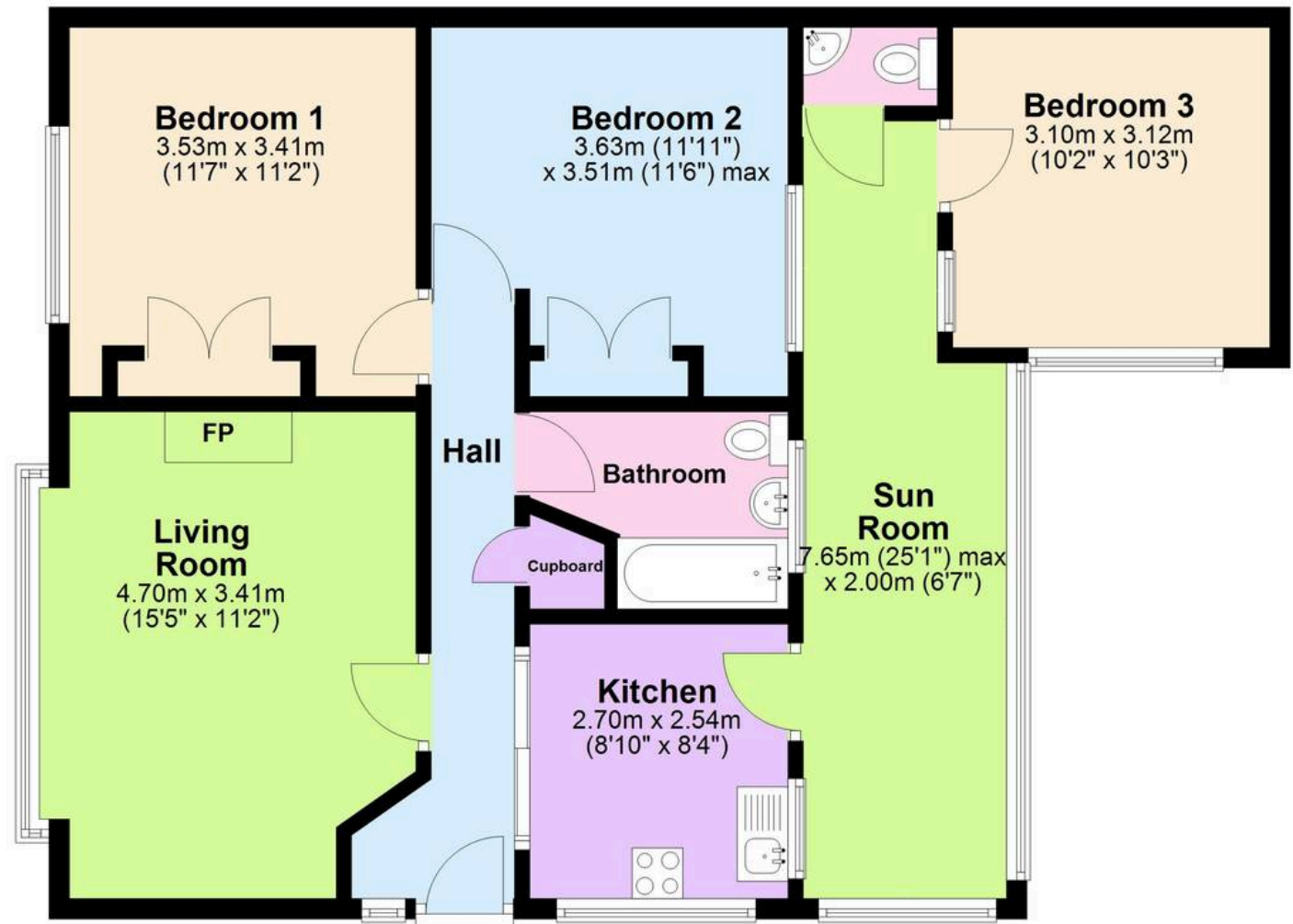
paignton@movewithabsolute.co.uk

<http://www.movewithabsolute.co.uk>



Ground Floor

Approx. 88.6 sq. metres (954.2 sq. feet)



Basement

Approx. 22.6 sq. metres (243.1 sq. feet)



Total area: approx. 111.2 sq. metres (1197.3 sq. feet)