

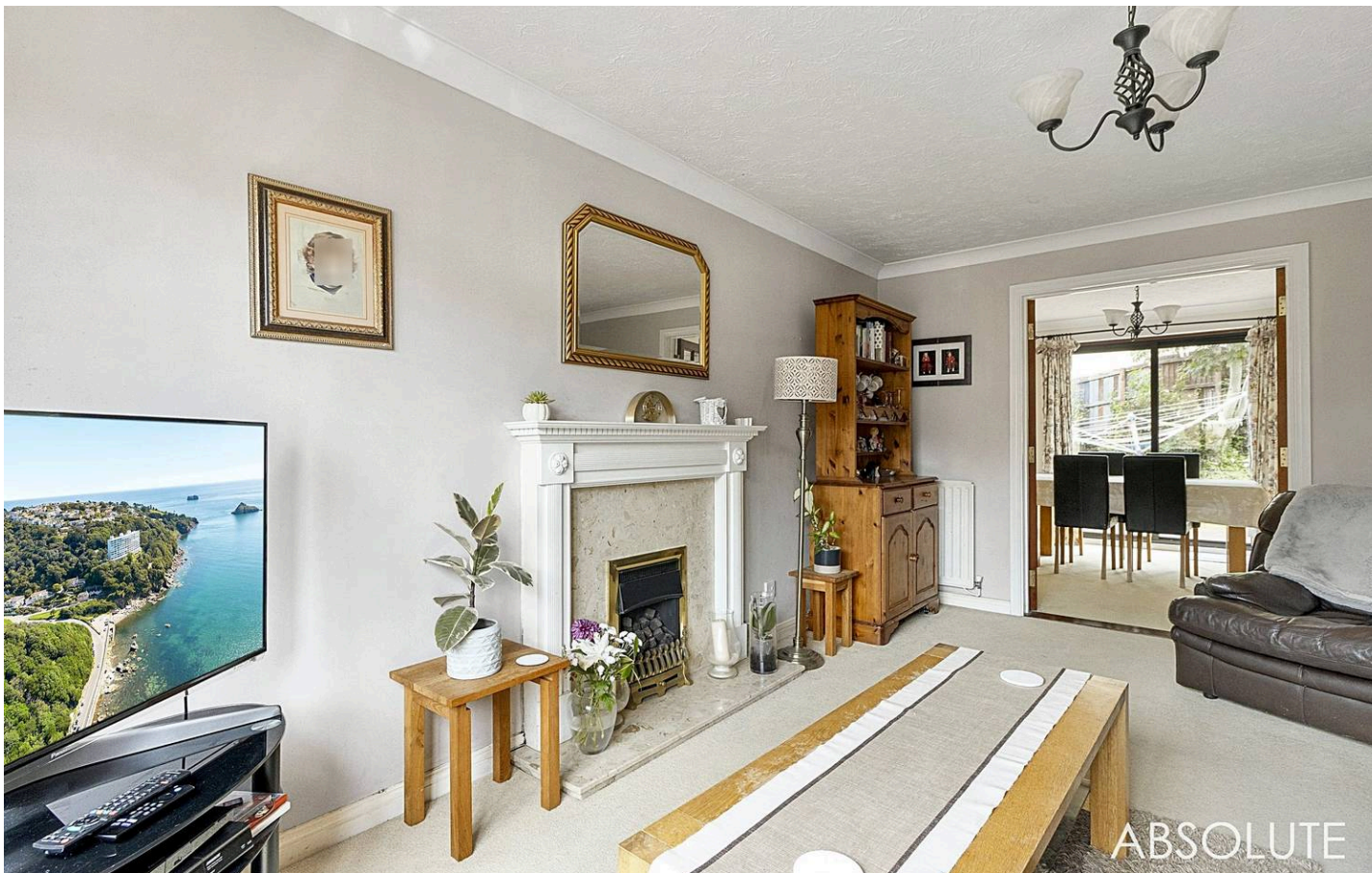


**3 Barn Owl Close, Torquay – TQ2 7TN**

Guide Price **£365,000**







### 3 Barn Owl Close

Torquay, Torquay

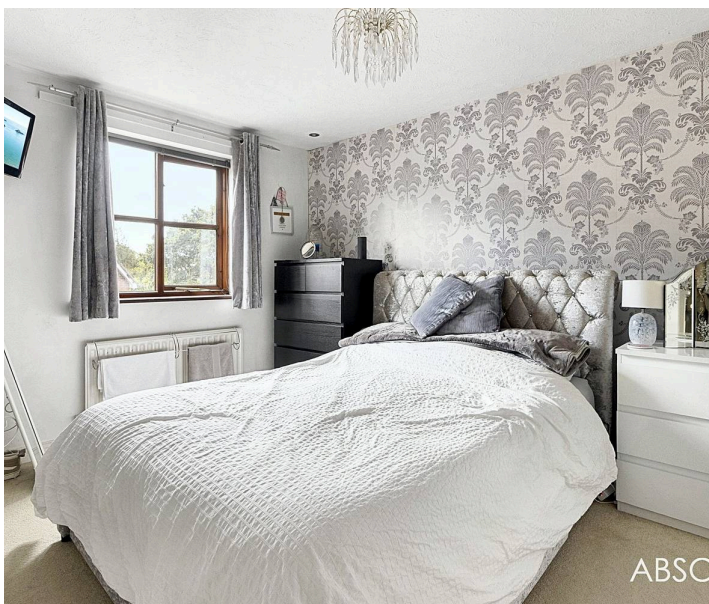
We are proud to present this generous sized four bedroom detached house with 3 bathrooms, 2 reception rooms, tandem garage and driveway location in the popular residential area of The Willows...

Council Tax band: E

Tenure: Freehold

EPC Energy Efficiency Rating: D

EPC Environmental Impact Rating: D





## 3 Barn Owl Close

Torquay, Torquay

The property is ideally located in the bottom part of the Willows, close to the Wren Retail Park, which includes a Sainsbury's shopping center, Marks & Spencer, and a variety of amenities. It offers access to good-quality local schools, such as Torquay Boys' and Girls' Grammar and local primary schools. With convenient access to Newton Abbot and Exeter via the A380, and the Torquay seafront just approximately 10 minutes by car, this location is ideal for easy commutes. It's also conveniently close to the local hospital, making it perfect for healthcare professionals.

### Absolute Sales & Lettings

Absolute Sales & Lettings Ltd, 13 Ilsham Road - TQ1 2JG

01803 214214

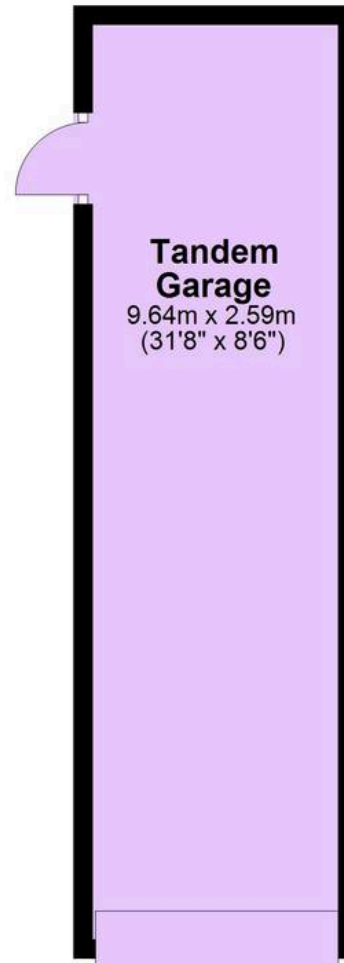
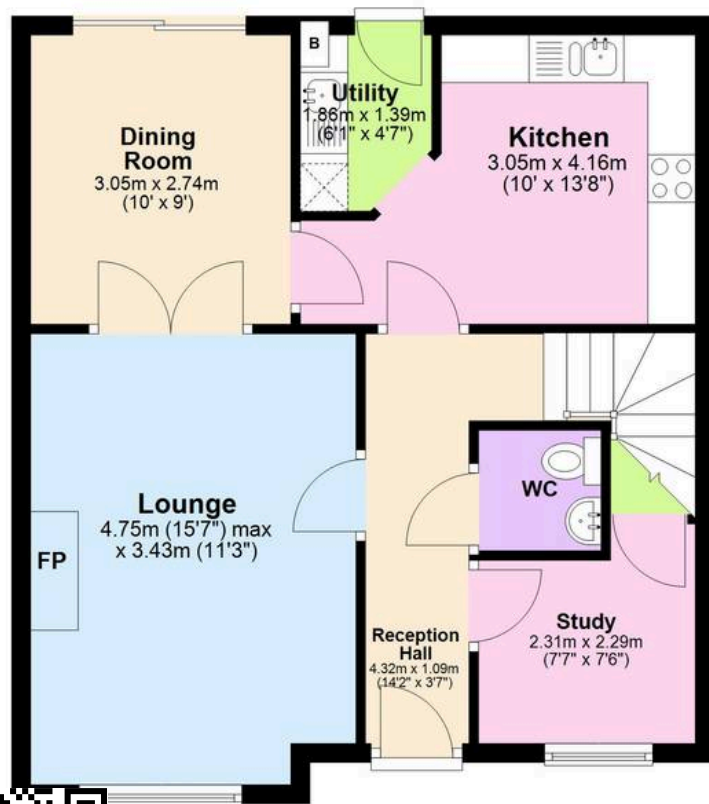
[torquay@movewithabsolute.co.uk](mailto:torquay@movewithabsolute.co.uk)

[movewithabsolute.co.uk/](http://movewithabsolute.co.uk/)



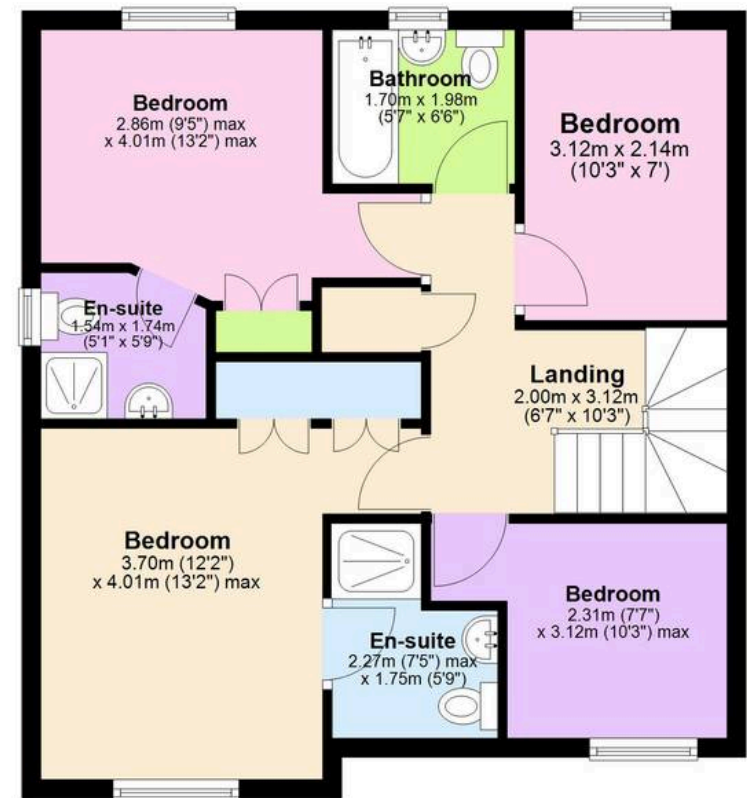
## Ground Floor

Approx. 78.5 sq. metres (844.6 sq. feet)



## First Floor

Approx. 55.7 sq. metres (599.8 sq. feet)



Total area: approx. 134.2 sq. metres (1444.4 sq. feet)

