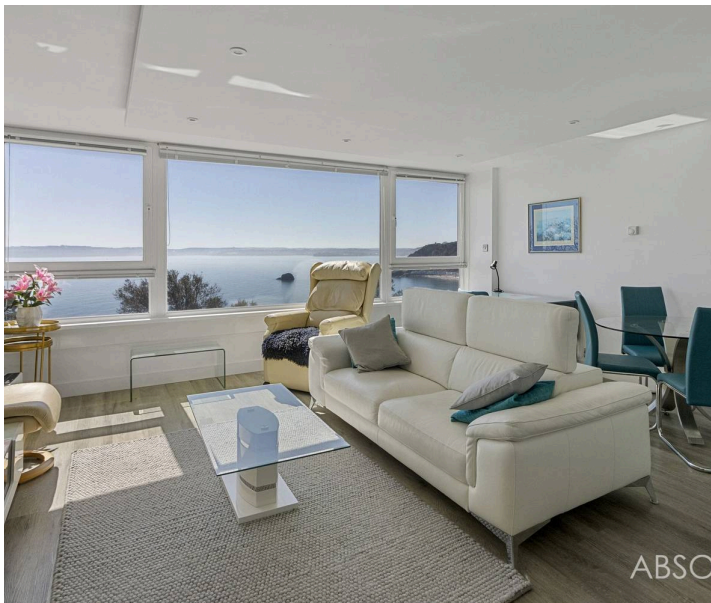




Flat 11, Kilmore Ilsham Marine Drive, Torquay – TQ1 2HU
£330,000





Flat 11

Kilmore Ilsham Marine Drive, Torquay

Stunning sea views, sought-after Torquay location. Luxurious coastal living with lift access, secure entrance. Modern interior with spacious rooms, generous bedrooms, communal gardens, parking.

Council Tax band: E

Tenure: Share of Freehold

EPC Energy Efficiency Rating: C

EPC Environmental Impact Rating: C

- Stunning panoramic sea views
- No onward chain
- Highly sought after seaside location in Torquay
- Undercover parking for residents and visitors parking
- Lift access
- Stylish and modern interior throughout
- Contemporary fitted kitchen with integrated appliances
- Generous sized accommodation throughout
- Almost 7 acres of beautiful communal gardens maintained by an onsite caretaker
- Four piece bathroom/WC

Flat 11

Kilmorie Ilsham Marine Drive, Torquay

The property is situated in an elevated position above Meadfoot beach allowing for a short stroll to enjoy the delights of Ilsham and the surroundings. There are various coastal paths which in turn lead you to Hopes Nose and Ansteys Cove. Local amenities can be found on Ilsham road to include the Co-op, cafes, restaurants, post office and much more. Local bus services run nearby providing flexible transport to many different destinations and Torquay Train Station just along the seafront. Kents Cavern is a popular local attraction and is also located nearby.

Absolute Sales & Lettings

Absolute Sales & Lettings Ltd, 13 Ilsham Road - TQ1 2JG

01803 214214

torquay@movewithabsolute.co.uk

movewithabsolute.co.uk/



Second Floor With Lift Access



Total area: approx. 100.3 sq. metres (1080.0 sq. feet)

