



27 Kingsley Avenue, Torquay - TQ2 7GU
£350,000





27 Kingsley Avenue

Torquay, Torquay

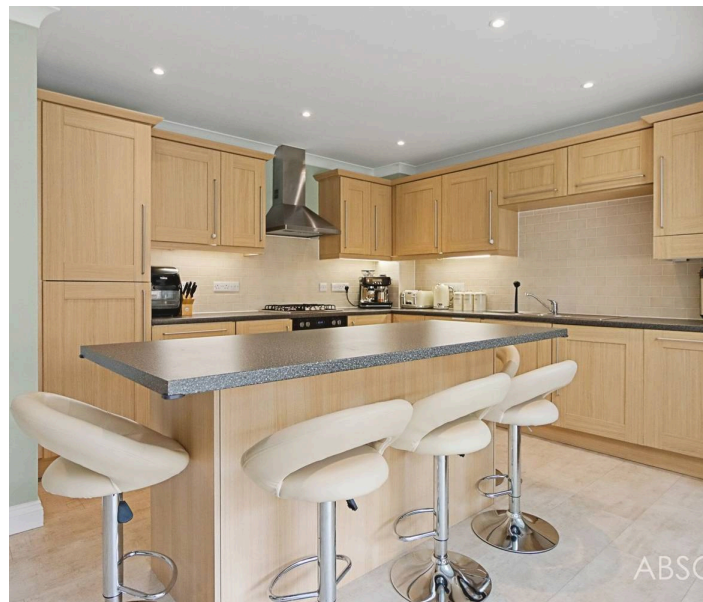
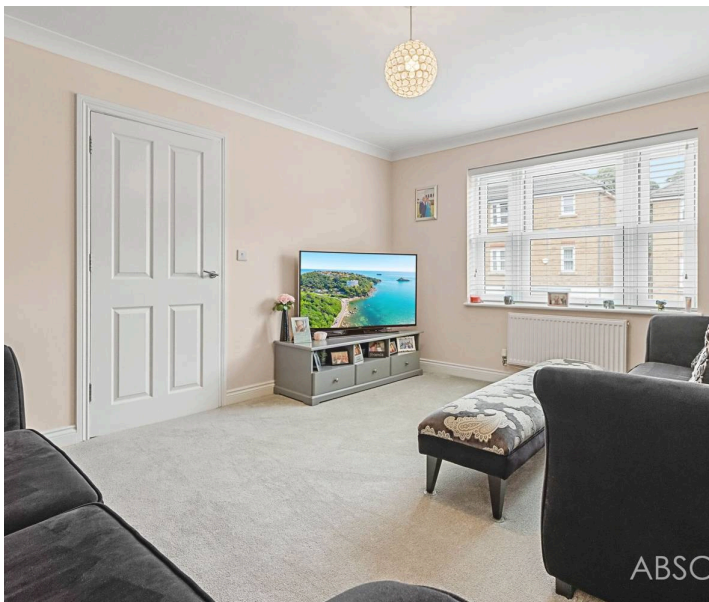
Elegant 4/5 bed townhouse in Kingsley Ave, The Willows. Extended kitchen, family room w/ bi-fold doors to sun-drenched garden. Principal suite with balcony. Garage, EV charging point. Council Tax band: D

Tenure: Freehold

EPC Energy Efficiency Rating: C

EPC Environmental Impact Rating: C

- Beautifully presented town house built by Cavanna Homes in 2008
- Fantastic Location in The Willows – close to Wren retail park and amenities
- Upgraded and improved by the current owners to create a turnkey home for new owners to enjoy
- Separate Garage, parking and EV Charger
- South west facing low-maintenance rear gardens
- Stunning Extended Kitchen/Family Room – with central island and bi-fold doors
- Flexible and versatile living spaces with downstairs additional snug/playroom
- Stylish bedroom one with built in wardrobes and en-suite
- Separate lounge on the 1st floor
- 3 bathrooms/en-suites plus downstairs cloakroom WC



27 Kingsley Avenue

Torquay, Torquay

Perfectly located on the edge of Torquay, the home is within easy reach of Wren Retail Park with M&S, Sainsbury's, Boots, and more. It offers quick access to the South Devon Highway, making it ideal for commuting to Newton Abbot, Exeter, and beyond. Families will appreciate proximity to Torbay Hospital, local grammar and primary schools, and the nearby shops and services in Barton.

Absolute Sales & Lettings

Absolute Sales & Lettings Ltd, 13 Ilsham Road - TQ1 2JG

01803 214214

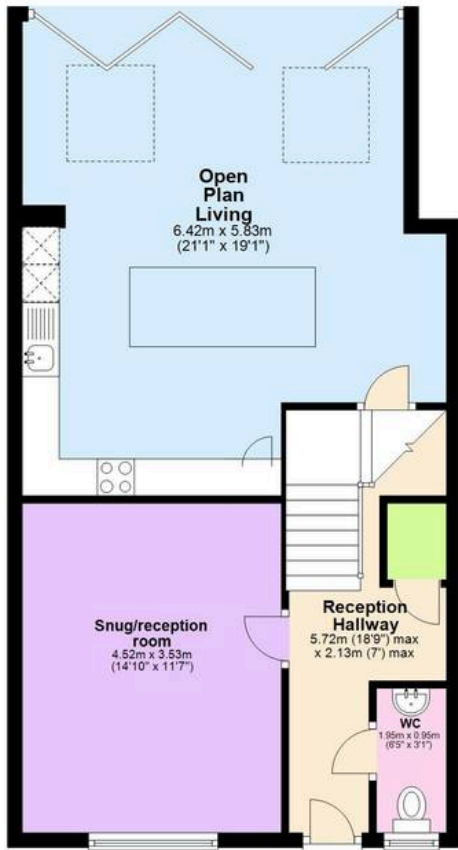
torquay@movewithabsolute.co.uk

movewithabsolute.co.uk/



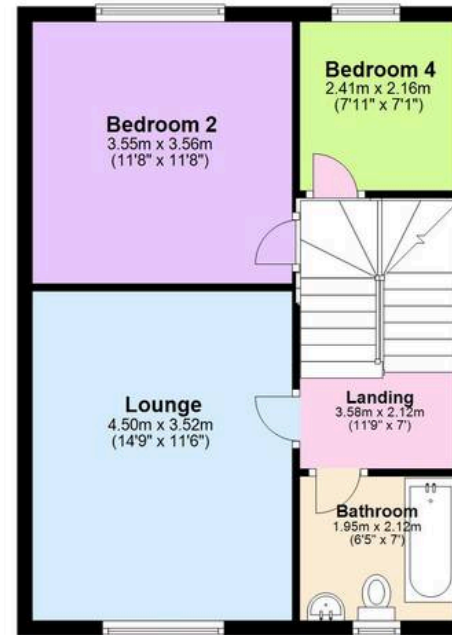
Ground Floor

Approx. 76.5 sq. metres (823.8 sq. feet)



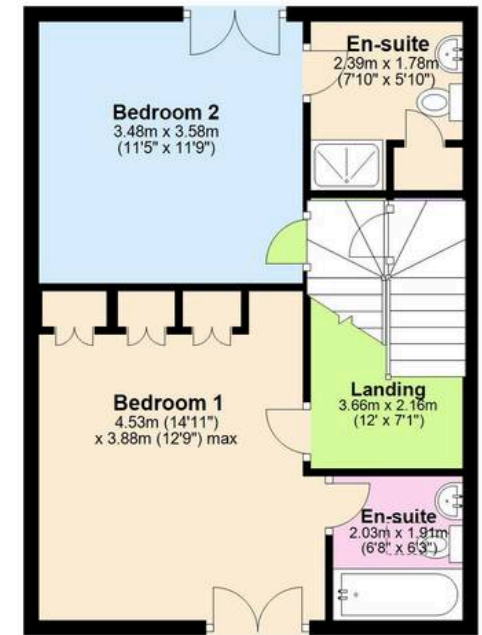
First Floor

Approx. 47.0 sq. metres (505.4 sq. feet)



Second Floor

Approx. 46.4 sq. metres (499.1 sq. feet)



Total area: approx. 169.9 sq. metres (1828.3 sq. feet)