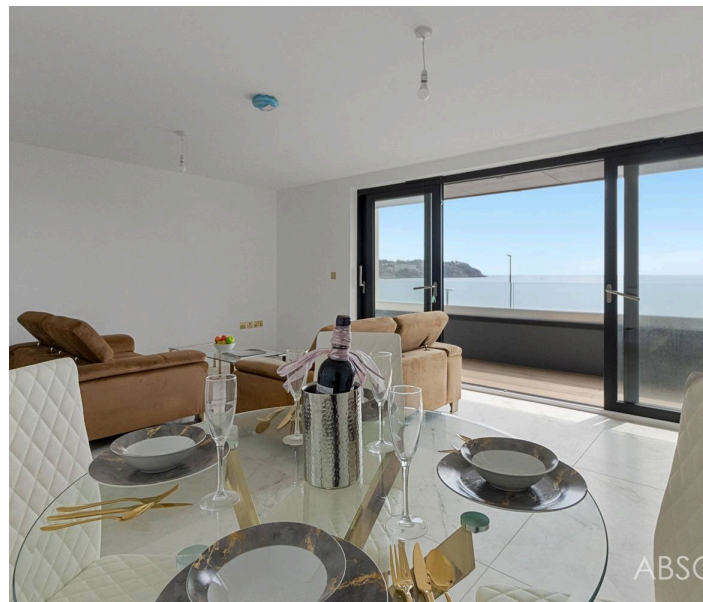




Apt 4, La Rosaire Livermead Hill, Torquay – TQ2 6QX  
£499,950







## Apartment 4

La Rosaire Livermead Hill, Torquay

**\*\* Open Home Event - 18/09/2025 between 12pm-2pm - No appointment necessary! \*\***  
 Exclusive seafront living at La Rosaire. 9 contemporary apartments with 2 beds, 2 baths, open plan living, balcony, undercroft parking. High-spec finishes, premium appliances, smart heating. Tranquil location with panoramic sea views. 10-year warranty. Internal viewing essential!

Council Tax band: TBD

Tenure: Leasehold

EPC Energy Efficiency Rating: B

EPC Environmental Impact Rating: B

- Exclusive seaside development of only 9 contemporary apartments
- Spectacular location, only a stones throw away from the beach!
- 10 Year builders warranty
- Uninterrupted sea views
- Secure undercroft parking and video entry system
- Private balcony encompassing the views
- Two bedrooms and two bathrooms
- The highest of quality kitchens with premium Miele integrated appliances
- App controlled underfloor heating throughout
- Luxurious bathrooms with designer fixtures, heated towel rails, and elegant tiling



## Apartment 4

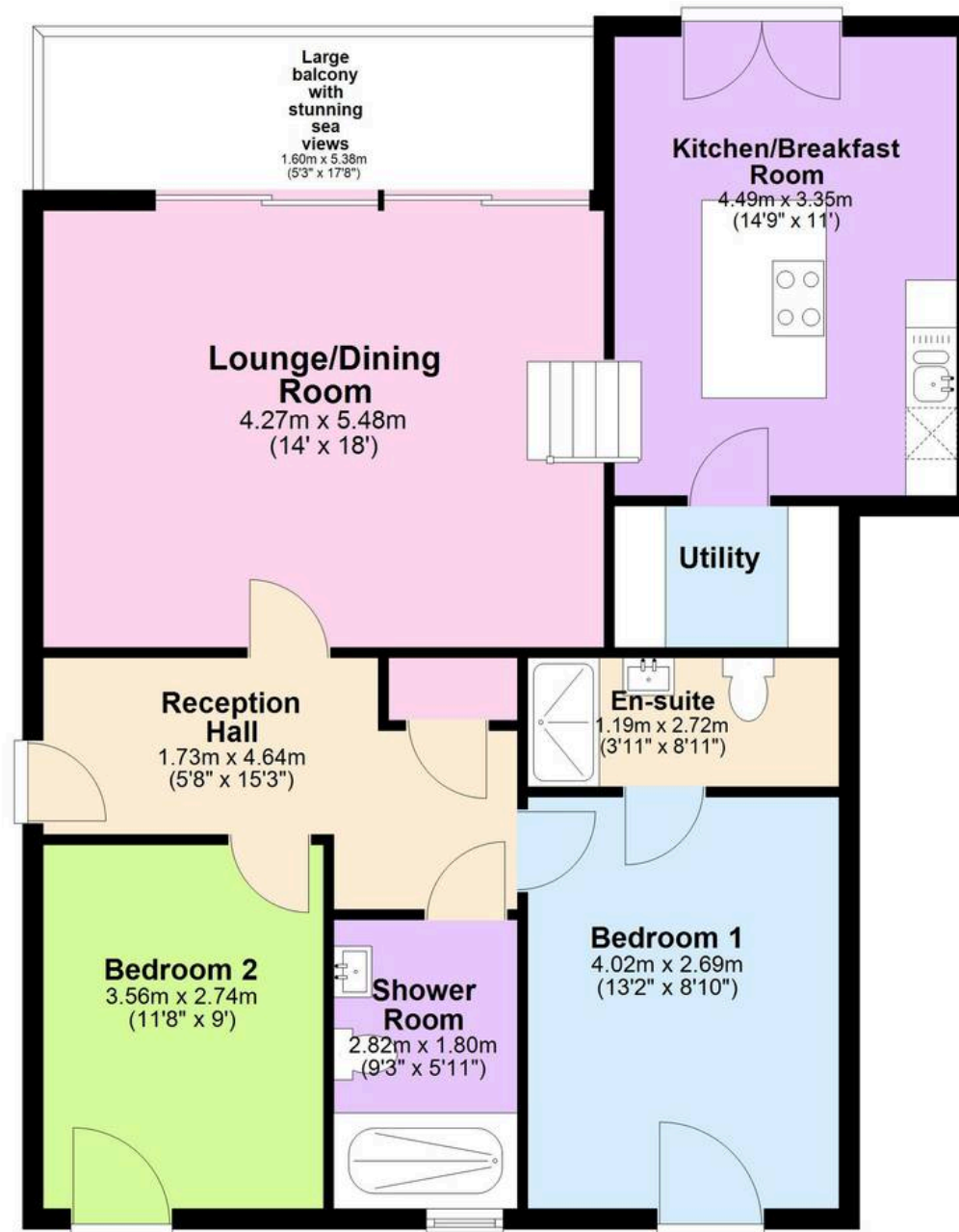
La Rosaire Livermead Hill, Torquay

La Rosaire truly encompasses coastal living, being only a stones throw away from Livermead sands and Torquay seafront, with Torquay being synonymous with the English Riviera on Devon's south coast and has been a popular destination for tourism since the Victorian era. The lively town centre, seafront and beautiful deep water marina have lots to offer, with a brilliant selection of bars and restaurants, galleries and museums and plenty of shops and amenities. The horseshoe shaped bay is a natural safe haven for visiting cruise liners and a paradise for yachtsmen and boating enthusiasts, with craft from local sailing clubs regularly seen competing in the bay with national and international races throughout the year. Boat trips around the bay and to Brixham and Dartmouth are very popular and traditional sporting opportunities including golf, tennis, bowls, and cricket are all close by. Excellent communication links include local bus services and inter-city railway stations at both Torquay and Newton Abbot. The South Devon Highway gives good access to the vibrant cities of Exeter and Plymouth. The international airport at Exeter provides a gateway to destinations further afield.



## First Floor with lift access

Approx. 82.7 sq. metres (890.6 sq. feet)



Total area: approx. 82.7 sq. metres (890.6 sq. feet)

