



Flat 6, Pine Court Middle Warberry Road, Torquay – TQ1 1R
£125,000





Flat 6

Pine Court Middle Warberry Road,
Torquay

Beautifully renovated 1-bed apartment in Pine Court Apartments, set in Warberries hills with allocated parking, no onward chain and plenty of space throughout...

Council Tax band: A

Tenure: Leasehold

EPC Energy Efficiency Rating: D

EPC Environmental Impact Rating: E

- Beautifully renovated one-bedroom apartment
- No onward chain
- Allocated parking space and additional on-road parking
- Ideal location near Wellswood, Meadfoot, and the harbour
- Set within a stunning Georgian villa in the Warberries.
- Spacious lounge/dining area with high ceilings and a feature fireplace
- Bespoke modern kitchen with roof lantern and ample natural light
- Main bedroom with built-in storage
- Modern, well-sized shower suite with walk-in shower and high end sanitary ware
- Beautiful communal gardens and grounds



Flat 6

Pine Court Middle Warberry Road, Torquay

Pine Court is to be found in an elevated position within the Warberries Conservation area which is sought after for its quiet ambiance and fine period buildings. This location is within easy reach of the harbourside and facilities of the town with local buses available nearby. The beaches at Meadfoot and Anstey's Cove with their waterside cafes are also close by and there is an excellent range of amenities at the nearby village style community of Wellswood where there is a parish church, pub, shops, salons, convenience stores, delicatessen, post office, pharmacy, restaurant and cafes.

Absolute Sales & Lettings

Absolute Sales & Lettings Ltd, 13 Ilsham Road - TQ1 2JG

01803 214214

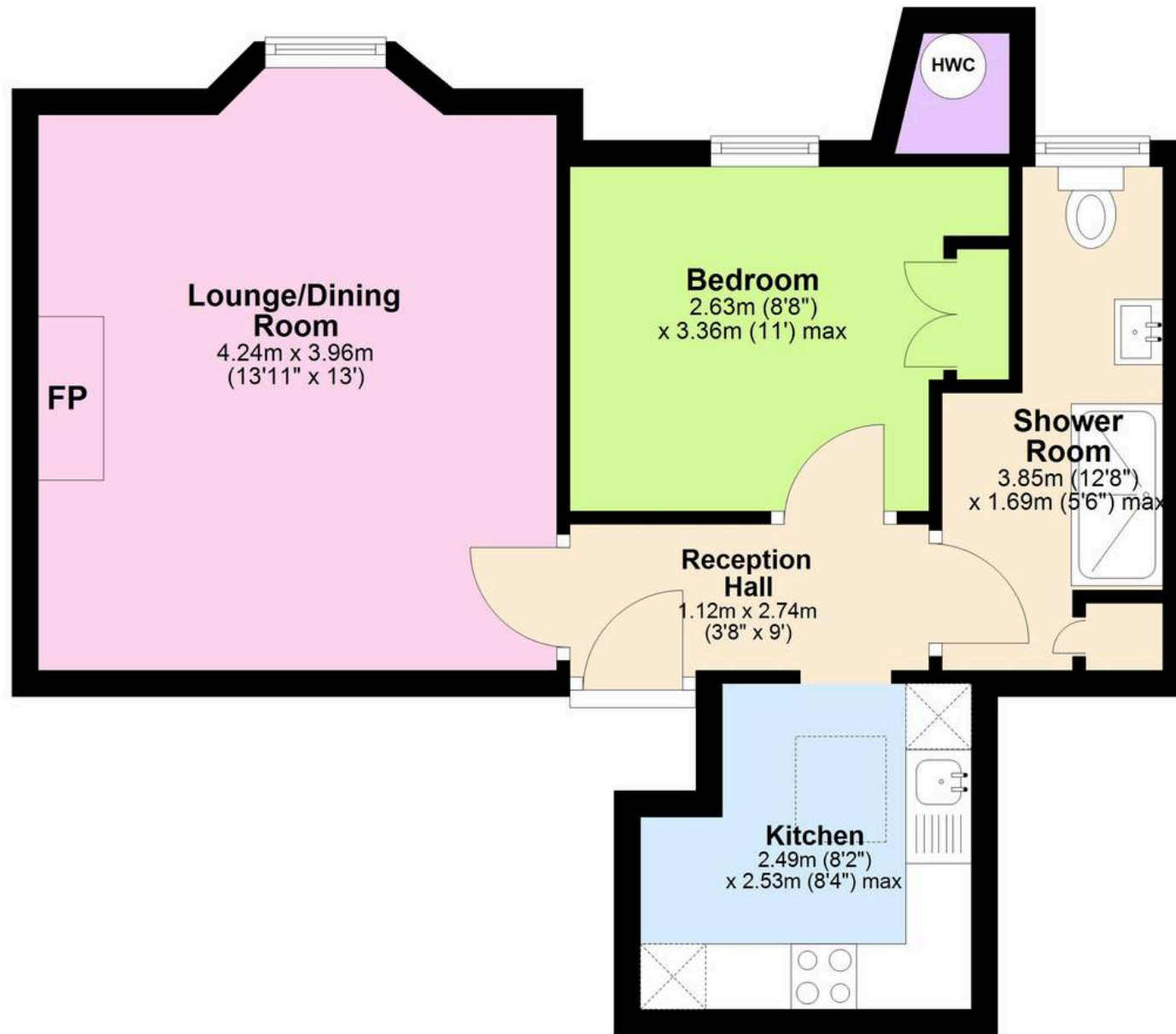
torquay@movewithabsolute.co.uk

movewithabsolute.co.uk/



First Floor

Approx. 41.7 sq. metres (449.4 sq. feet)



Total area: approx. 41.7 sq. metres (449.4 sq. feet)