



ABSOLUTE

Hesketh Mews Meadfoot Sea Road, Torquay – TQ1 2LT

Guide Price **£400,000**





Hesketh Mews, Meadfoot Sea Road

Torquay

Exceptional 4-bed town house only 100 yards from Meadfoot Beach. Luxurious and contemporary living across 3 levels. Open-plan kitchen diner, bright sitting room, en-suite primary bedroom, gas heating, double glazing, garage, courtyard garden. Perfect coastal living. Don't miss out!

Council Tax band: E

Tenure: Freehold

EPC Energy Efficiency Rating: C

- Sought after location 100 yards from Meadfoot Beach
- Four bed town house set over three levels
- Kitchen diner with built in appliances
- Downstairs WC and bedroom
- First floor sitting room
- Three further bedrooms with main having en suite shower room/WC
- Family bathroom/WC
- Gas central heating and uPVC double glazing
- Single garage in a nearby block
- Courtyard style enclosed garden



Hesketh Mews, Meadfoot Sea Road

Torquay

The property occupies a much sought after residential position within 100 yards of Meadfoot Beach, ideal for water sport enthusiasts. The property is within approximately 1 mile from Wellswood Village with its array of boutique shops, facilities, amenities and local primary school. Torquay town centre and harbour are both within approximately 1 miles distance

Absolute Sales & Lettings

Absolute Sales & Lettings Ltd, 13 Ilsham Road - TQ1 2JG

01803 214214

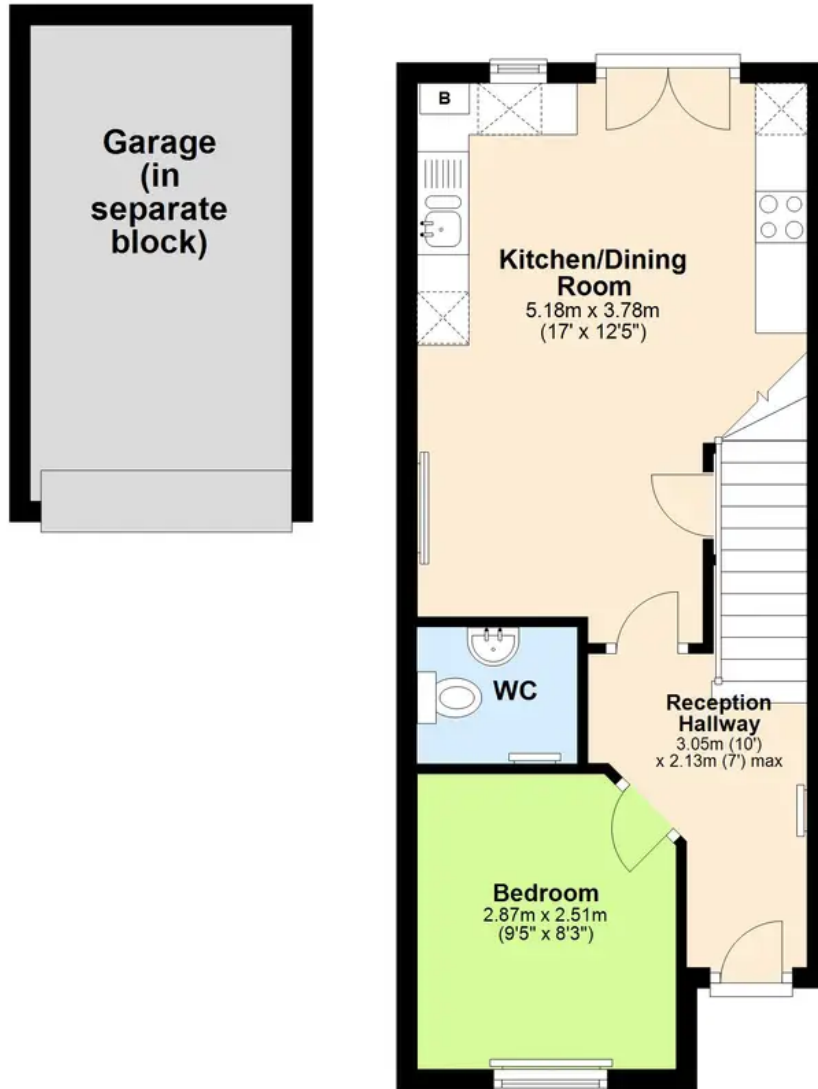
torquay@movewithabsolute.co.uk

movewithabsolute.co.uk/



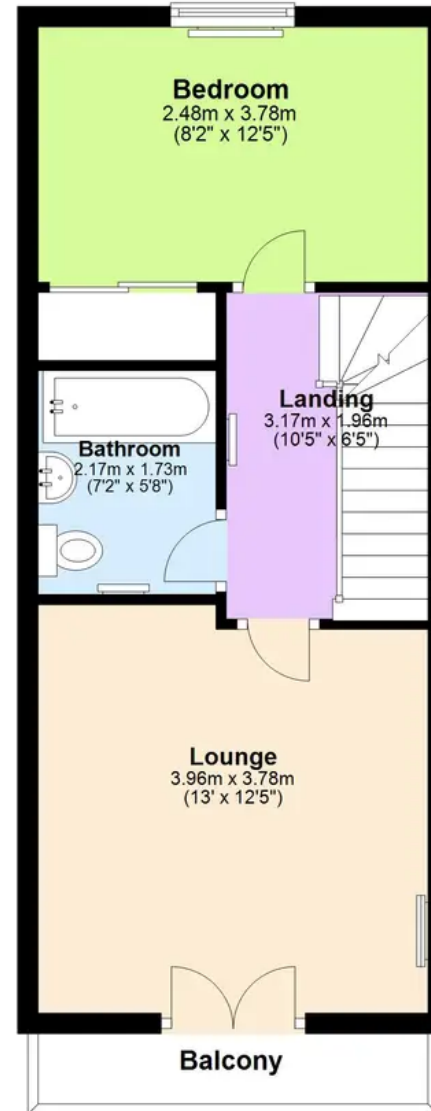
Ground Floor

Approx. 35.0 sq. metres (376.4 sq. feet)



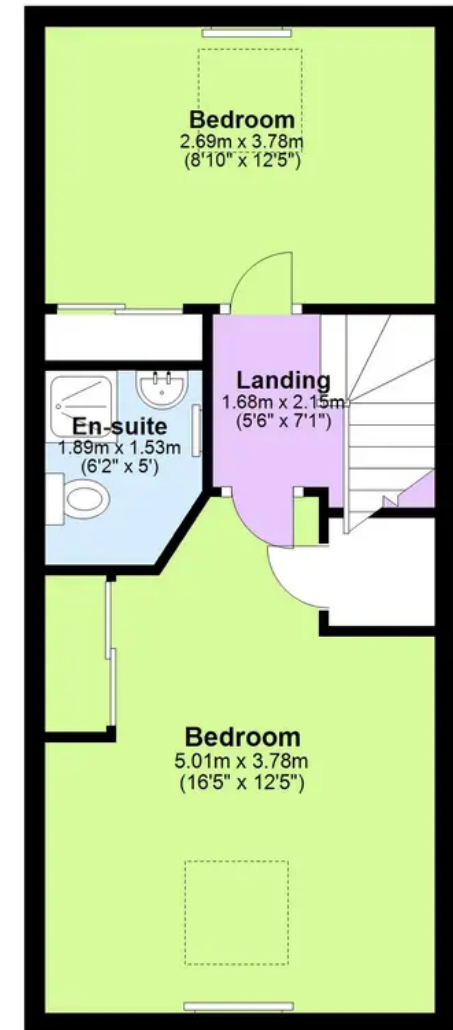
First Floor

Approx. 36.2 sq. metres (390.0 sq. feet)



Second Floor

Approx. 36.5 sq. metres (392.6 sq. feet)



Total area: approx. 107.7 sq. metres (1159.0 sq. feet)

Approx.
Plan produced using PlanUp.

