



Flat 2, Meadwood St. Marks Road, Torquay – TQ1 2EH
£280,000





Flat 2

Meadwood St. Marks Road, Torquay

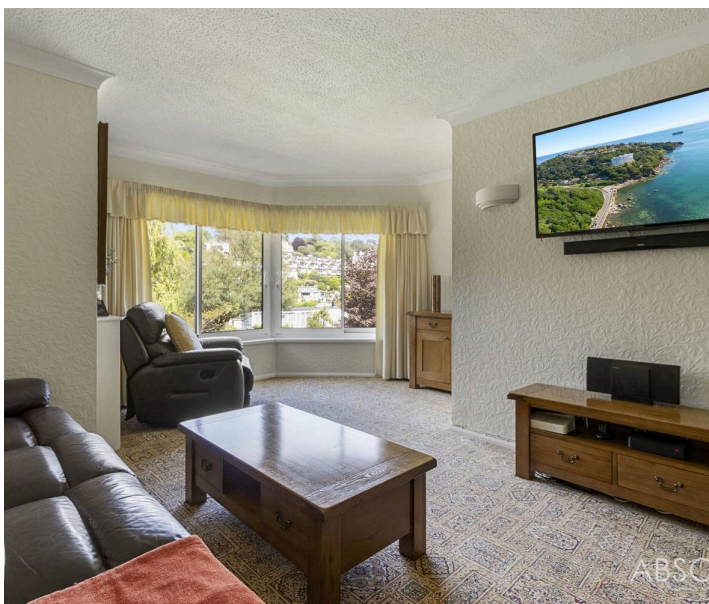
Luxurious 2-bed apartment in Meadfoot, with sea views and sunny balcony. Freehold ownership, modern kitchen, spacious living areas and well-maintained grounds. Ideal coastal retreat. Council Tax band: D

Tenure: Share of Freehold

EPC Energy Efficiency Rating: D

EPC Environmental Impact Rating: D

- A spacious 1st floor apartment in Meadfoot
- Beautiful manicured grounds and gardens close to the beach and Daddyhole Plain
- Well presented throughout and much improved by the current owners
- Private parking bays plus garage in a separate paddock
- Large reception hallway, spacious lounge/dining room and 2 large double bedrooms
- Spacious main bathroom and en-suite
- Modern kitchen breakfast room with a pantry
- Residents own the freehold
- Sea views from the lounge
- South facing sunny balcony off the bedroom



Flat 2

Meadwood St. Marks Road, Torquay

Meadwood is perfectly positioned on St Marks Road in one of the most prestigious areas of Torquay. This apartment is ideally situated between Meadfoot beach, Torquay harbour and the South West coastal path. Wellswood village offers a superb range of quality local shops, friendly ambience and dining. With clean beaches, beautiful gardens and parks, Torquay's natural beauty is undeniable, it is surrounded by a stunning coastline and sheltered sailing waters. The lively waterfront of Torquay harbour is within walking distance, this is home to the marina, pontoon berthing, bars and restaurants. The town offers a diverse range of shopping, dining and leisure opportunities, together with excellent health care and communication links including a direct rail service to London, joining with the intercity network at Newton Abbot, and the South Devon Highway providing a fast road link to Exeter and the M5 motorway.

Absolute Sales & Lettings

Absolute Sales & Lettings Ltd, 13 Ilsham Road - TQ1 2JG

01803 214214

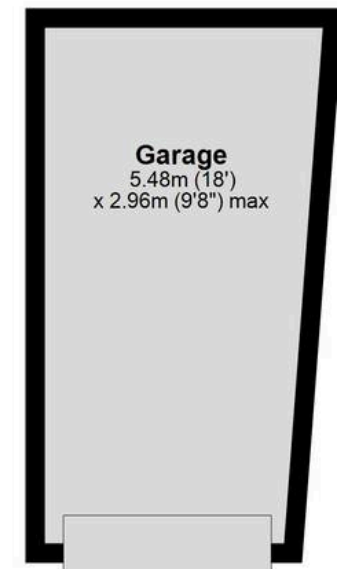
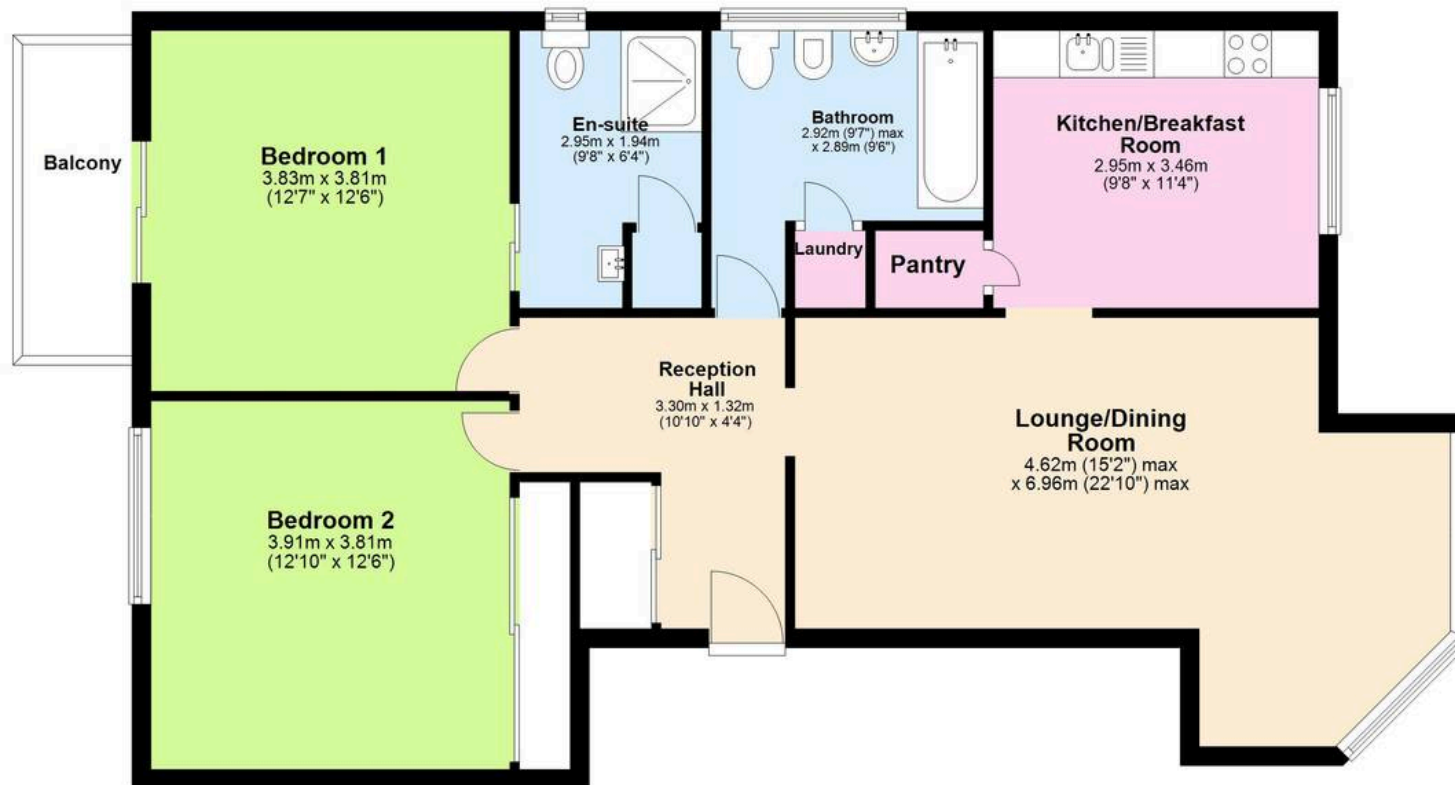
torquay@movewithabsolute.co.uk

movewithabsolute.co.uk/



First Floor

Approx. 106.1 sq. metres (1142.1 sq. feet)



Total area: approx. 106.1 sq. metres (1142.1 sq. feet)

Approx
Plan produced using PlanUp.

