





## 4 Stoke Road

### Maidencombe, Torquay

With a sun-soaked southerly aspect, the front garden has been beautifully landscaped by the current owners, featuring a gated patio terrace and a rolling lawn down to the roadside.

A spacious driveway accommodates up to four vehicles, complemented by an attached garage primarily used for outdoor sports gear and bicycles. Inside, you'll find the timeless 1930s layout, beginning with a large reception hallway with era-appropriate tiling. The bay-windowed front reception room features a cozy log-burning stove and French doors leading to the terrace.

There's a handy study area perfect for remote work, and a spacious kitchen-dining room illuminated by skylights, making it an ideal spot for entertaining. The home also includes a large utility and boot room with ample storage, as well as a convenient downstairs WC.

Upstairs, you'll find three well-appointed bedrooms with original stripped down doors, including two generous doubles—the main one bay-fronted with stunning countryside views—and a modern bathroom suite with bath and shower over. This property is ideal for first-time buyers or a small family seeking a home near St. Marychurch and Babbacombe, with easy access to coastal paths, local amenities, and nearby beaches



## GARDEN

Large elevated front garden enjoying a southerly aspect. A recently installed patio/terrace area which has been fenced off and accessed via the side or the lounge. Having lovely views of the surrounding countryside

## REAR GARDEN

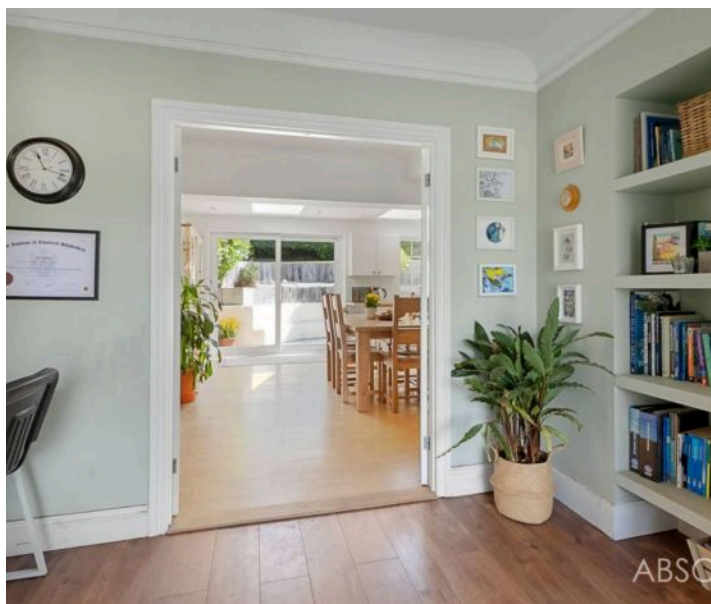
2 tiered rear gardens which have been sectioned off using railway sleepers and neatly kept beds housing plants and shrubbery

## DRIVEWAY

4 Parking Spaces

## GARAGE

Single Garage



## 4 Stoke Road

Maidencombe, Torquay

Maidencombe has a well-regarded pub, the Thatched Tavern, a 4 star hotel and a wonderful beach with a Cafe which is only a very small walk away from Stoke road, with further access to the South West coastal path, perfectly suited for those who enjoy coastal walks surrounded by stunning scenery. There is also the number 22 bus which serves Teignmouth, Torquay and beyond. The nearby village of Stokeinteignhead has an excellent primary school, which Stoke road is in the Catchment area for, a village shop, church and pub. A first-rate range of facilities can be found in the delightful towns of Teignmouth or Torquay, with Torquays lively town centre, seafront and deep water marina benefitting from a brilliant selection of restaurants and bars, galleries and a museum and plenty of shops and amenities. St Marychurch and its delightful precinct is also only a short drive away with fantastic range of independent pubs, cafes, bakeries and more and the well loved Torquay Golf Course. There are good transport links with easy access to Exeter via the coast road through Teignmouth linking to the A380 dual carriageway and the M5. Mainline rail links are available from Teignmouth and Newton Abbot.

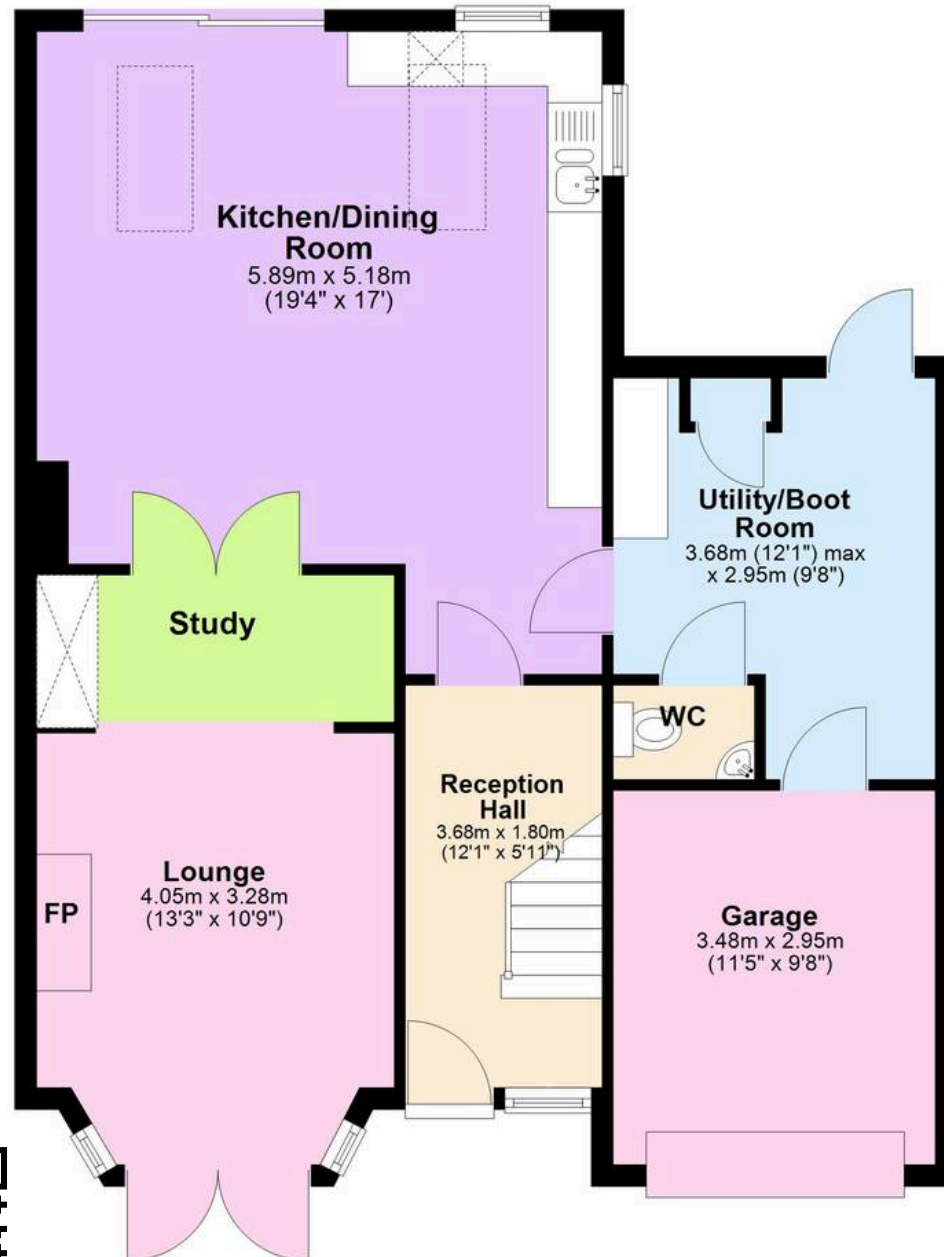






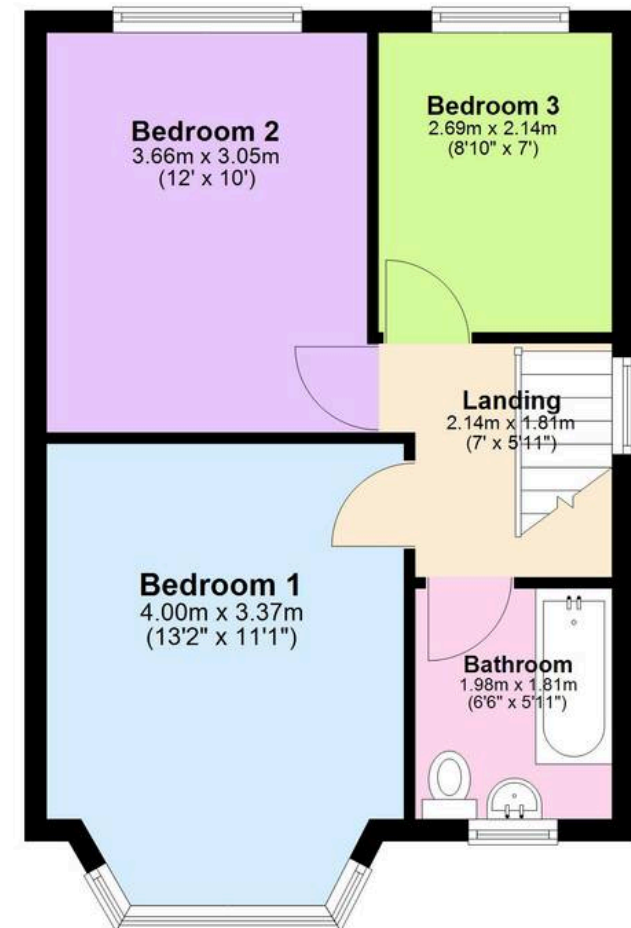
## Ground Floor

Approx. 63.5 sq. metres (683.9 sq. feet)



## First Floor

Approx. 39.1 sq. metres (420.8 sq. feet)



Total area: approx. 102.6 sq. metres (1104.7 sq. feet)





## Absolute Sales & Lettings

Absolute Sales & Lettings Ltd, 13 Ilsham Road - TQ1 2JG

01803 214214

[torquay@movewithabsolute.co.uk](mailto:torquay@movewithabsolute.co.uk)

[movewithabsolute.co.uk/](http://movewithabsolute.co.uk/)

