



Flat 11, Glenside Court Higher Erith Road, Torquay – TQ1 2R
£130,000





Flat 11

Glenside Court Higher Erith Road,
Torquay

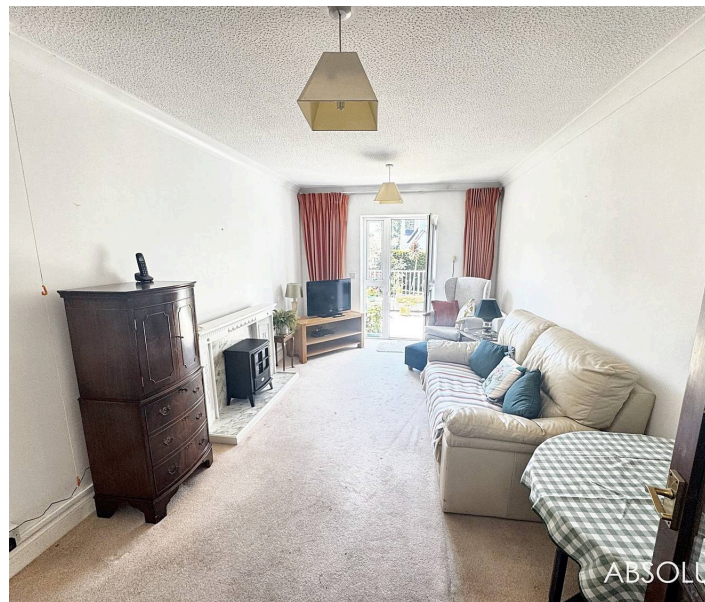
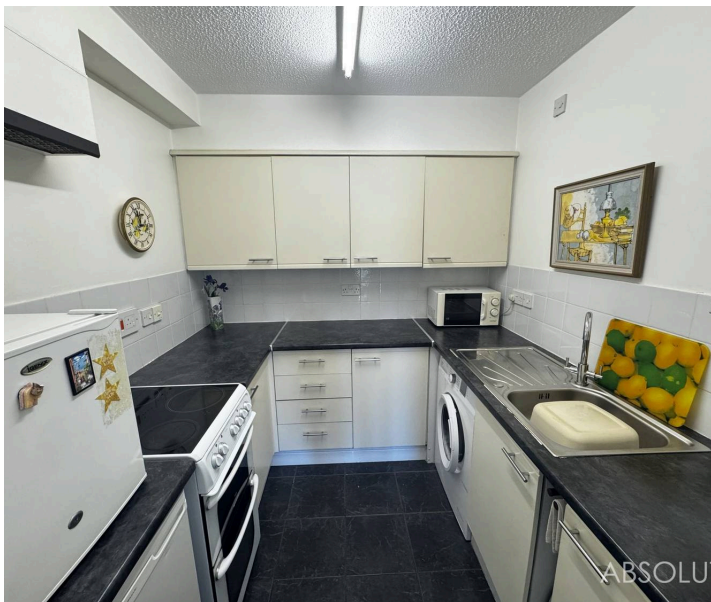
One-bed retirement apartment in Wellswood Village with private terrace & garden views. Ground floor access, allocated parking, modern kitchen & spacious shower room. No chain, move-in ready.
Council Tax band: B

Tenure: Leasehold

EPC Energy Efficiency Rating: B

EPC Environmental Impact Rating: C

- Rare ground-floor retirement apartment in Wellswood Village.
- Private and spacious sunny terrace with garden views.
- Spacious double bedroom with built-in wardrobe.
- Direct level access from the outside—no stairs needed.
- Allocated parking space included.
- Private storage area on the garden floor
- Modern fitted kitchen with ample workspace
- Bright lounge/diner with French door to the terrace
- Large shower suite and towel radiator
- No onward chain—move in ready



Flat 11

Glenside Court Higher Erith Road, Torquay

The development is set in the sought-after Lincombes Conservation area close to the village style community of Wellswood with its range of shops, cafes, post office, pharmacy and church. The local beaches at Meadfoot and Anstey's Cove and the facilities of town, harbour and seafront esplanade are just a short distance away. A regular bus service operates from both Babbacombe Road and Ilsham Road leading to the harbourside and town, out of town shopping areas and Torbay Hospital.

Absolute Sales & Lettings

Absolute Sales & Lettings Ltd, 13 Ilsham Road - TQ1 2JG

01803 214214

torquay@movewithabsolute.co.uk

movewithabsolute.co.uk/



Ground Floor

Approx. 44.1 sq. metres (474.3 sq. feet)



Total area: approx. 44.1 sq. metres (474.3 sq. feet)

Approx
Plan produced using PlanUp.

