



54 Henbury Close, Torquay - TQ1 3HR
£250,000





54 Henbury Close

Torquay

Beautiful mock-Georgian mews house on quiet cul-de-sac near Plainmoor. Immaculate, spacious interiors, landscaped frontage, modern kitchen, bay-fronted lounge, three double bedrooms, garage, parking.

Council Tax band: C

Tenure: Freehold

EPC Energy Efficiency Rating: D

EPC Environmental Impact Rating: D

- Mock-Georgian mews house in a quiet cul-de-sac location
- Immaculately presented interior with pristine curb appeal and Torbay palm
- Spacious reception hallway with understairs cupboard and separate WC
- Bay-fronted lounge/dining room with feature fireplace
- Bright dining area opening to a low-maintenance rear garden through sliding doors
- Kitchen with built-in appliances and ample storage
- Gorgeous modern shower suite with double cubicle and heated towel rail
- Two double bedrooms with wardrobes plus a generous third bedroom
- Separate garage in a rear paddock with additional parking



54 Henbury Close

Torquay,

Henbury Close stands within a few miles distance of Torquay's bustling town centre and harbourside with a host of waterside restaurants, shops, theatre and mooring facilities. Local amenities at nearby St Marychurch and Babbacombe are also easily accessible where the cliff railway or winding pathways lead down the wooded hillside to the shingle beaches of Babbacombe and Oddicombe. Plainmoor Swimming Pool, Torquay United and The Spires College secondary school are found within a stone's throw of the property. Torquay is nestled on the warm South Devon coast being one of three towns along with Paignton and Brixham which form the natural east facing harbour of Torbay, sheltered from the English Channel. Torbay's wide selection of stunning beaches, picturesque coastline, mild climate and recreational facilities reinforce why it has rightfully earned the renowned nickname of the English Riviera

Absolute Sales & Lettings

Absolute Sales & Lettings Ltd, 13 Ilsham Road - TQ1 2JG

01803 214214

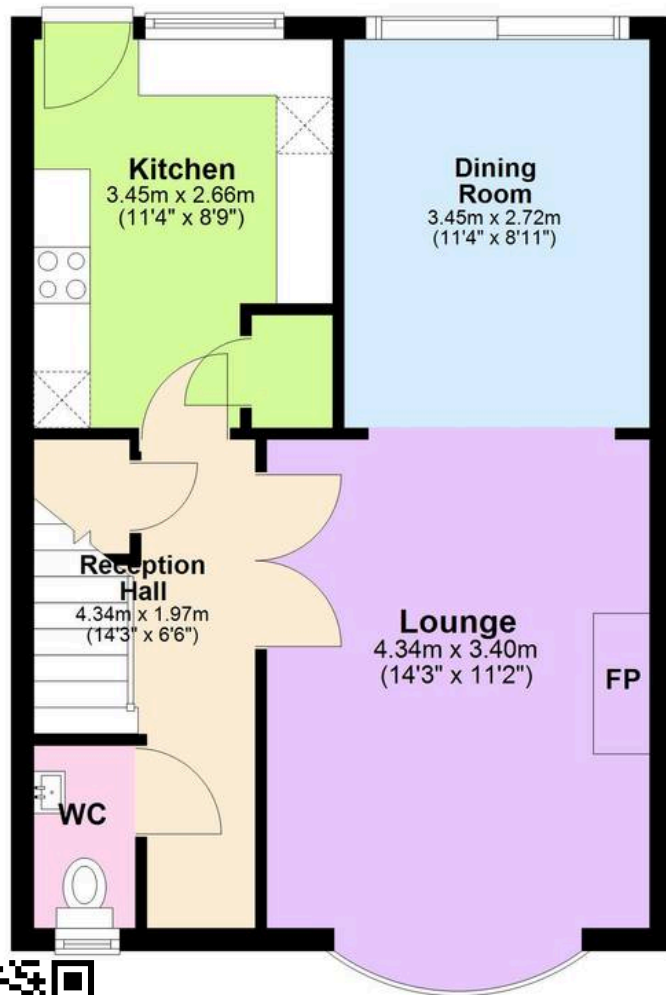
torquay@movewithabsolute.co.uk

movewithabsolute.co.uk/



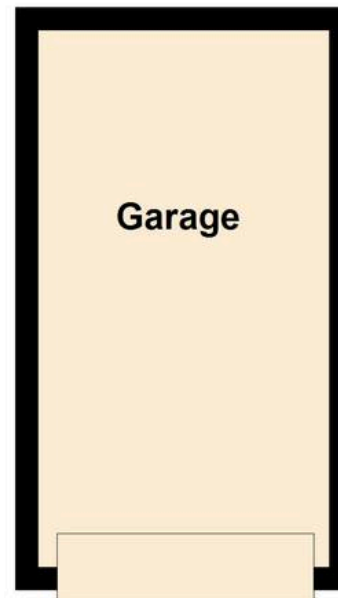
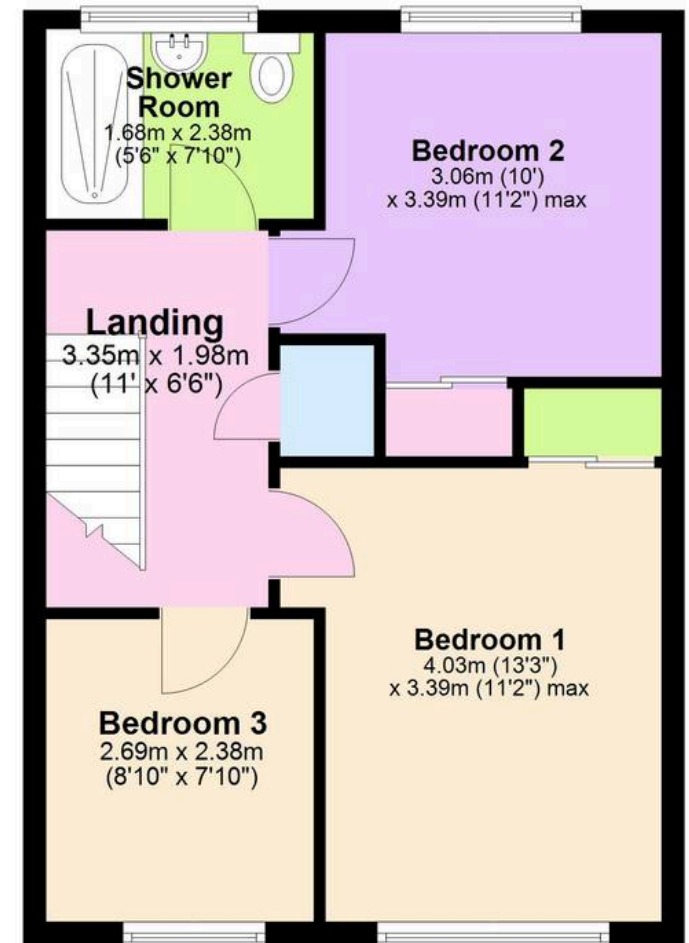
Ground Floor

Approx. 55.9 sq. metres (601.4 sq. feet)



First Floor

Approx. 43.3 sq. metres (465.7 sq. feet)



Total area: approx. 99.1 sq. metres (1067.1 sq. feet)