



ABSOLUTE

23 Ocean View Crescent, Brixham – TQ5 0BE

Guide Price **£185,000**





23 Ocean View Crescent

Brixham,

Charming 2-bed apartment in higher Brixham with sea and rural views. Open-plan lounge/diner, spacious bedrooms, tandem garage, private garden. Ideal for first-time buyers/investors.

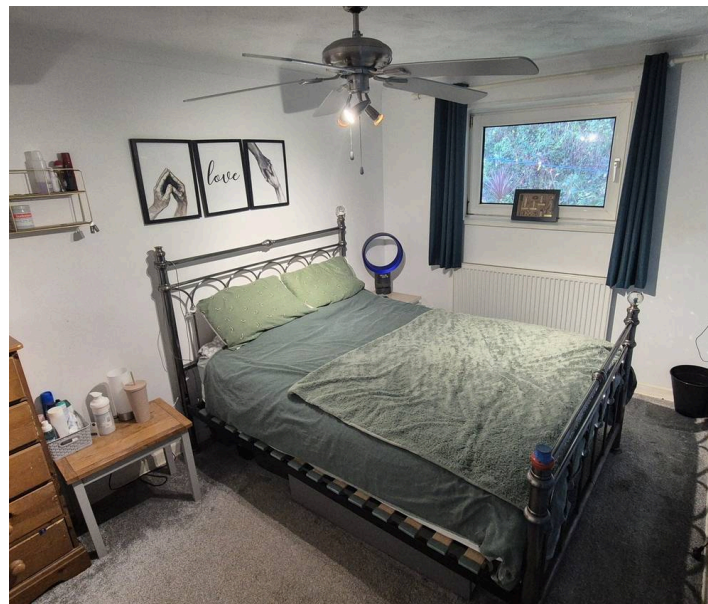
Council Tax band: A

Tenure: Leasehold

EPC Energy Efficiency Rating: D

EPC Environmental Impact Rating: D

- Two bed Apartment
- Private garden to the side
- Sea and rural views
- Double tandem garage located below the apartment
- Located in higher Brixham on good bus routes
- UPVC double glazing throughout
- Open plan lounge/diner
- Gas central heating
- Ideal starter home for first time buyers
- Ideal investment for buy to let investors



23 Ocean View Crescent

Brixham,

Located conveniently close to a local bus route between Brixham town centre and Kingswear. Local convenience store, public house, hairdressers and sub Post Office can be found approximately 3/4 of a mile down towards Brixham at St. Mary's Square.

Absolute Sales & Lettings

Absolute Sales & Lettings, 36 Fore Street - TQ5 8DZ

01803 214214

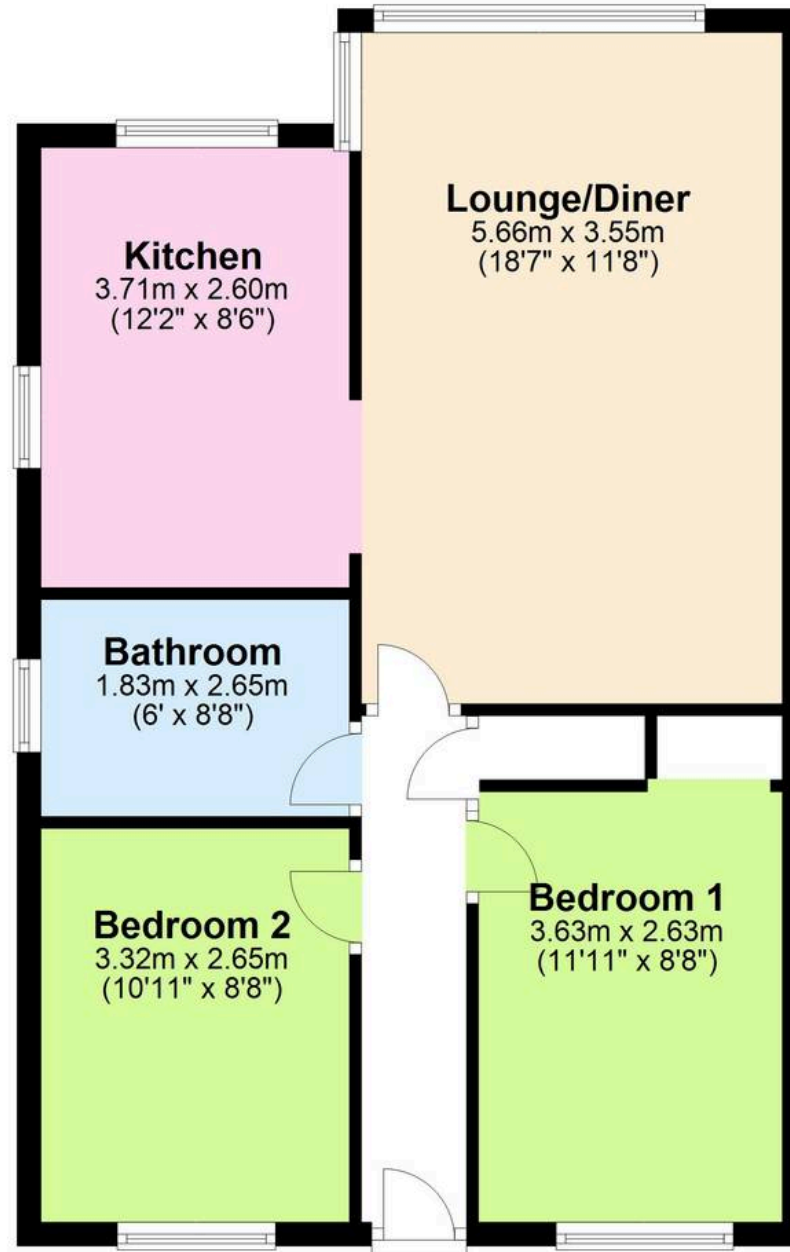
brixham@movewithabsolute.co.uk

movewithabsolute.co.uk/



Ground Floor

Approx. 60.4 sq. metres (649.9 sq. feet)



Total area: approx. 60.4 sq. metres (649.9 sq. feet)

