



Astoria Court, Belle Vue Road, Paignton, TQ4 6ES

Paignton

Fixed Price **£310,000**

ABSOLUTE



Astoria Court, Belle Vue Road

Paignton

A large open plan apartment on the ground floor in this brand new development in Roundham. The property has a private garden surrounding the property, an allocated parking space, two double bedrooms, a wet-room and an ensuite, as well as a separate courtyard area to the rear. The property comes with built in appliances, carpets and flooring with no onward chain.



GARDEN

The property has a private garden surrounding the property

ALLOCATED PARKING

1 Parking Space



Astoria Court, Belle Vue Road

Paignton

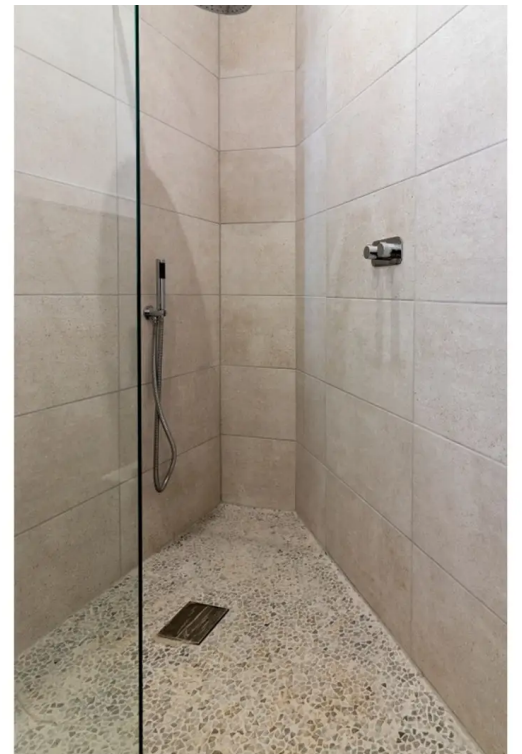
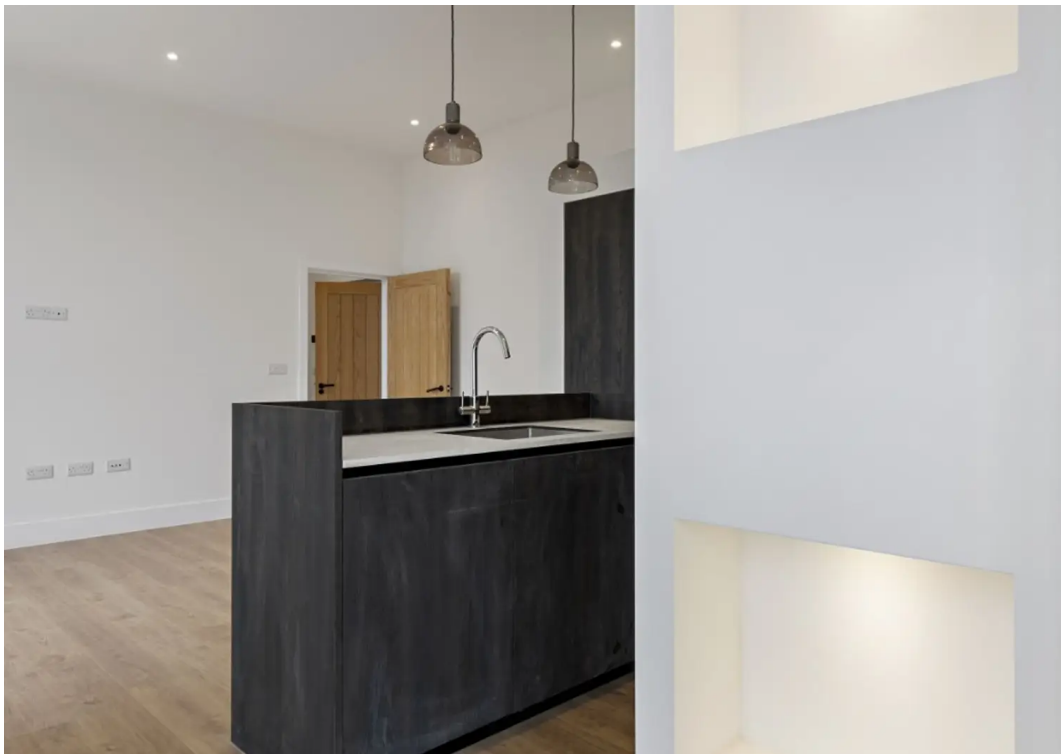
Astoria Court is located in the highly desirable location of Roundham, noted for its picturesque harbour side, thatched cottages and village ambience. The area offers restaurants, cafes and bars plus access to the South West coast path and blue flag beaches. A haven for those that love to paddle board, sail or enjoy cycling or walking the promenade to Paignton or cliff path to Goodrington. Tenure: Leasehold

- Newly converted luxury apartment within select development
- Sea view from living space
- Contemporary fitted Italian designer kitchen
- Two double bedrooms, main bedroom with en-suite shower room
- Private outside courtyard area
- Contemporary fitted shower room
- High specification throughout
- Allocated parking space
- Perfect location for access to amenities on the harbour side
- EPC - TBC / Council tax band - TBC



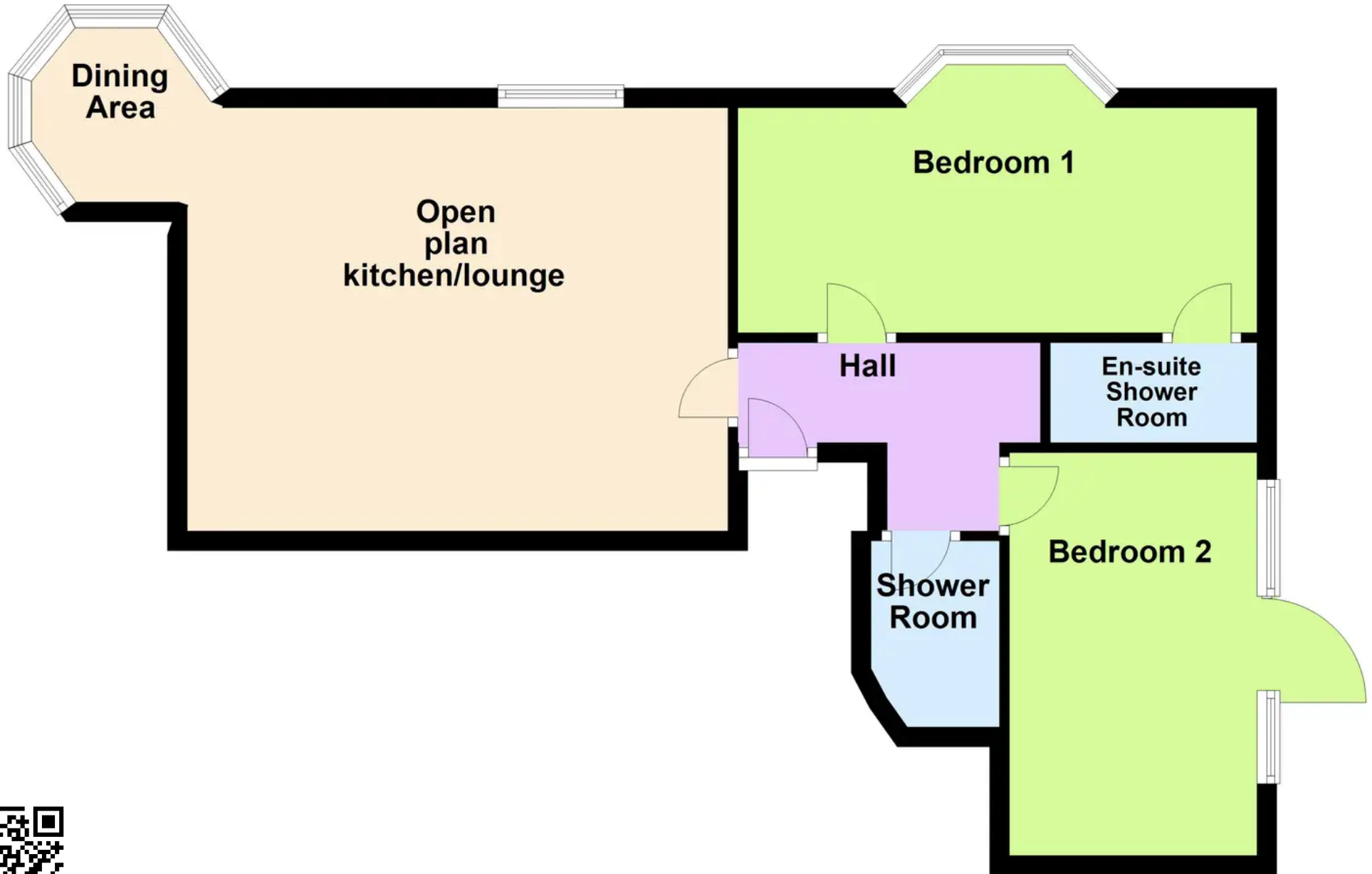


ABSOLUTE



Ground Floor

Approx. 59.2 sq. metres (636.8 sq. feet)



Total area: approx. 59.2 sq. metres (636.8 sq. feet)



Absolute Sales & Lettings

Absolute Sales & Lettings, 27 Hyde Road - TQ4 5BP

01803 890110

paignton@movewithabsolute.co.uk

<http://www.movewithabsolute.co.uk>

