



12 Trumlands Road, Torquay – TQ1 4RN
£315,000





12 Trumlands Road

Torquay, Torquay

A spacious four bedroom extended semi-detached home in a sought after area in St Marychurch close to schools and the precinct, with driveway parking for 2-3 cars and generous sized level rear garden..

Council Tax band: D

Tenure: Freehold

- An extended four bed semi detached house
- Larger than average enclosed level rear garden
- Driveway parking for 2/3 cars
- In need of modernisation
- Two reception rooms
- Fitted kitchen with built in appliances
- Four bedrooms
- Downstairs cloakroom/WC
- Bathroom/WC
- Gas central heating and uPVC double glazing



12 Trumlands Road

Torquay, Torquay

The property occupies a popular residential position adjacent to Cuthbert Mayne Secondary School and within close proximity to local primary schools.

Torquay sea front and town centre are both within approximately 1.5 miles distance. There is easy access to both Grammar schools, Torbay Hospital and the ring road which connects to Newton Abbot, Exeter and beyond. An early inspection is essential to appreciate the accommodation on offer.

Absolute Sales & Lettings

Absolute Sales & Lettings Ltd, 13 Ilsham Road - TQ1 2JG

01803 214214

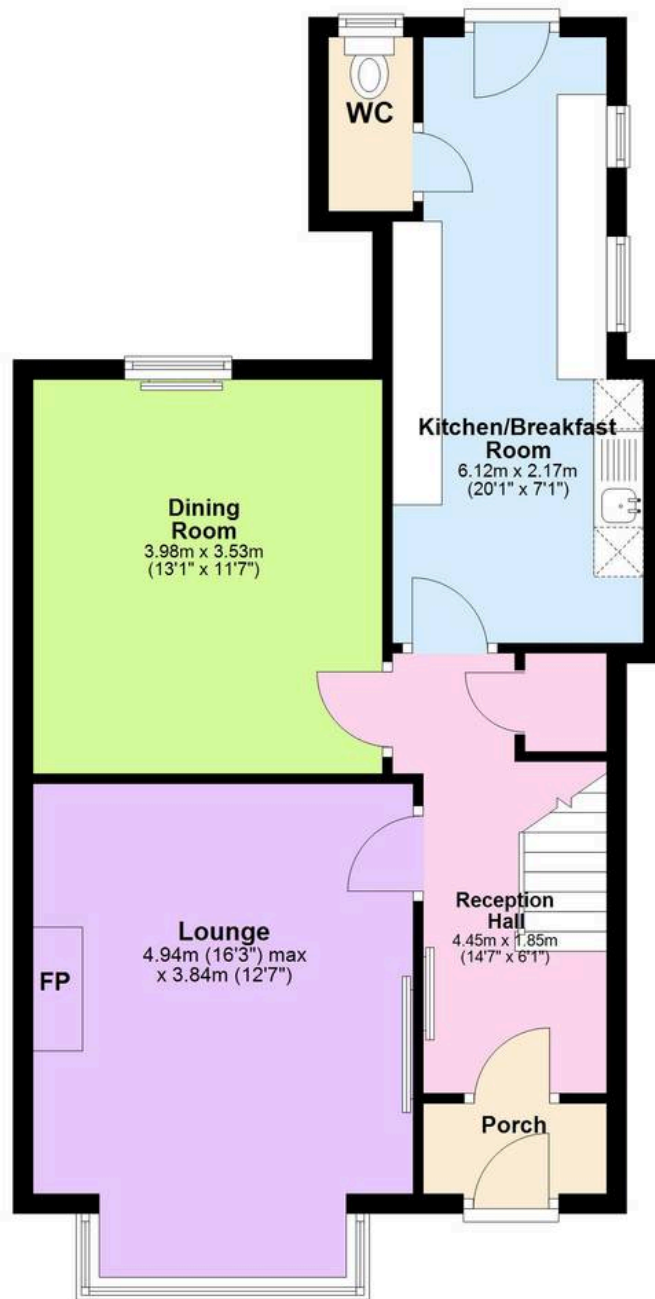
torquay@movewithabsolute.co.uk

movewithabsolute.co.uk/



Ground Floor

Approx. 58.3 sq. metres (627.7 sq. feet)



First Floor

Approx. 55.4 sq. metres (595.9 sq. feet)



Total area: approx. 113.7 sq. metres (1223.6 sq. feet)

