



Livvy Dean Mews St. Margarets Close, Torquay – TQ1 4FZ

Guide Price £500,000





Livvy Dean Mews St. Margarets Close

Torquay

Stunning 4 bed townhouse near St Marychurch precinct. Modern finishes, spacious throughout. Open plan kitchen/dining area, reception hall, 4 double bedrooms, family bathroom, utility room. Main bedroom with balcony, dressing room, en suite. Allocated parking, enclosed garden.

Council Tax band: E

Tenure: Freehold

EPC Energy Efficiency Rating: B

- A superbly presented and spacious house
- Sought after location close to St Marychurch precinct
- Spacious accommodation set over three floors
- Downstairs cloakroom/WC
- Sitting room
- Quality modern fitted kitchen/breakfast room with built in appliances
- Family room/dining area with bi-folding doors giving access to the rear
- Four good size bedrooms, main with dressing room and en suite shower room/WC
- Four piece family bathroom/WC
- Separate utility room on the first floor
- Open views from the rear
- Allocated parking for 2 cars
- Low maintenance, enclosed rear garden
- Electric gated community



Livvy Dean Mews St. Margarets Close

Torquay

Conveniently located within close proximity to St Marychurch precinct, this property offers easy access to a variety of local amenities, including shops, restaurants, and leisure facilities as well as local schools. The beautiful Torbay coast is also nearby, providing opportunities for leisurely walks and stunning seaside views.

Absolute Sales & Lettings

Absolute Sales & Lettings Ltd, 13 Ilsham Road - TQ1 2JG

01803 214214

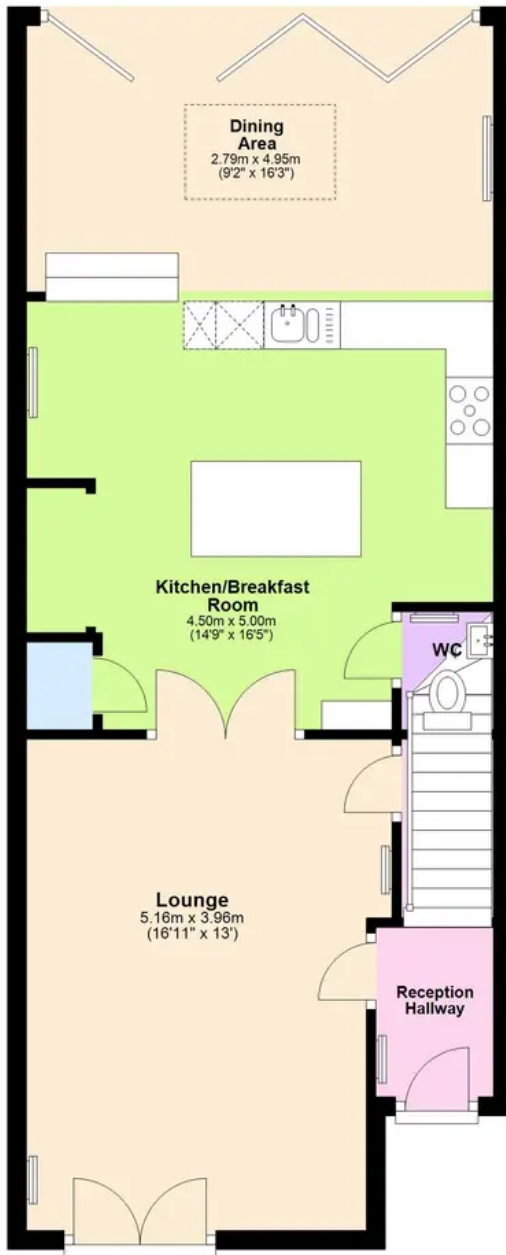
torquay@movewithabsolute.co.uk

movewithabsolute.co.uk/



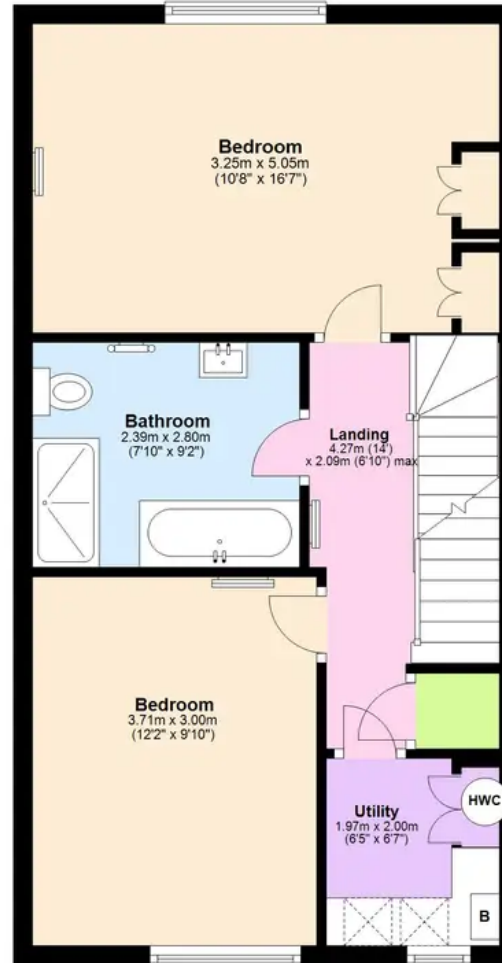
Ground Floor

Approx. 60.5 sq. metres (650.9 sq. feet)



First Floor

Approx. 48.1 sq. metres (517.7 sq. feet)



Second Floor

Approx. 43.3 sq. metres (466.0 sq. feet)



Total area: approx. 151.9 sq. metres (1634.7 sq. feet)

Approx
Plan produced using PlanUp.