



Holme Court, Lower Warberry Road, Torquay – TQ1 1QR
£185,000





Holme Court, Lower Warberry Road

Torquay, Torquay

Situated in prestigious Warberries (Torquay), 18 Holm Court offers exceptional living with southerly garden views. This upper-floor apartment features 2 double bedrooms, lift access, lounge-diner, balcony, kitchen, shower suite, cloakroom, ample storage, on-site parking, swimming pool, garage, and a long lease. Priced to sell with no chain.

Council Tax band: C

Tenure: Leasehold

EPC Energy Efficiency Rating: C

EPC Environmental Impact Rating: C

- Prestigious Warberries location with stunning southerly views
- Upper-floor 2 bedroom apartment with convenient lift access
- Two large double bedrooms with built-in wardrobes
- Spacious reception hallway with a communal entry telephone system
- Corner lounge-diner with dual-aspect private balcony
- Large kitchen breakfast room with ample storage
- Modern shower suite and separate cloakroom toilet
- On-site parking and a garage in a separate block
- Beautifully landscaped gardens
- Residents Swimming pool



Holme Court, Lower Warberry Road

Torquay, Torquay

Prominently positioned in one of Torquay's most sought-after locations, this beautifully refurbished entrance-level apartment has been meticulously modernised throughout making this an ideal single level living coastal home. Just a short stroll from Wellswood high street and Torquay Harbourside Torquay is one of three beautiful towns forming the sheltered Tor Bay and is renowned for the warm climate, clear bathing waters and clean air. The local beaches form a golden arc around the bay with shingle coves scattered nearby. The town provides a wonderful quality of life for its residents with excellent shopping, waterside restaurants, a theatre and bars. Internationally renowned water sports are held in the sheltered bay, with the marina providing excellent mooring facilities for luxury yachts and motor cruisers. The area provides many scenic walks along south Devon's coastal footpaths, with local golf courses also nearby

Absolute Sales & Lettings

Absolute Sales & Lettings Ltd, 13 Ilsham Road - TQ1 2JG

01803 214214

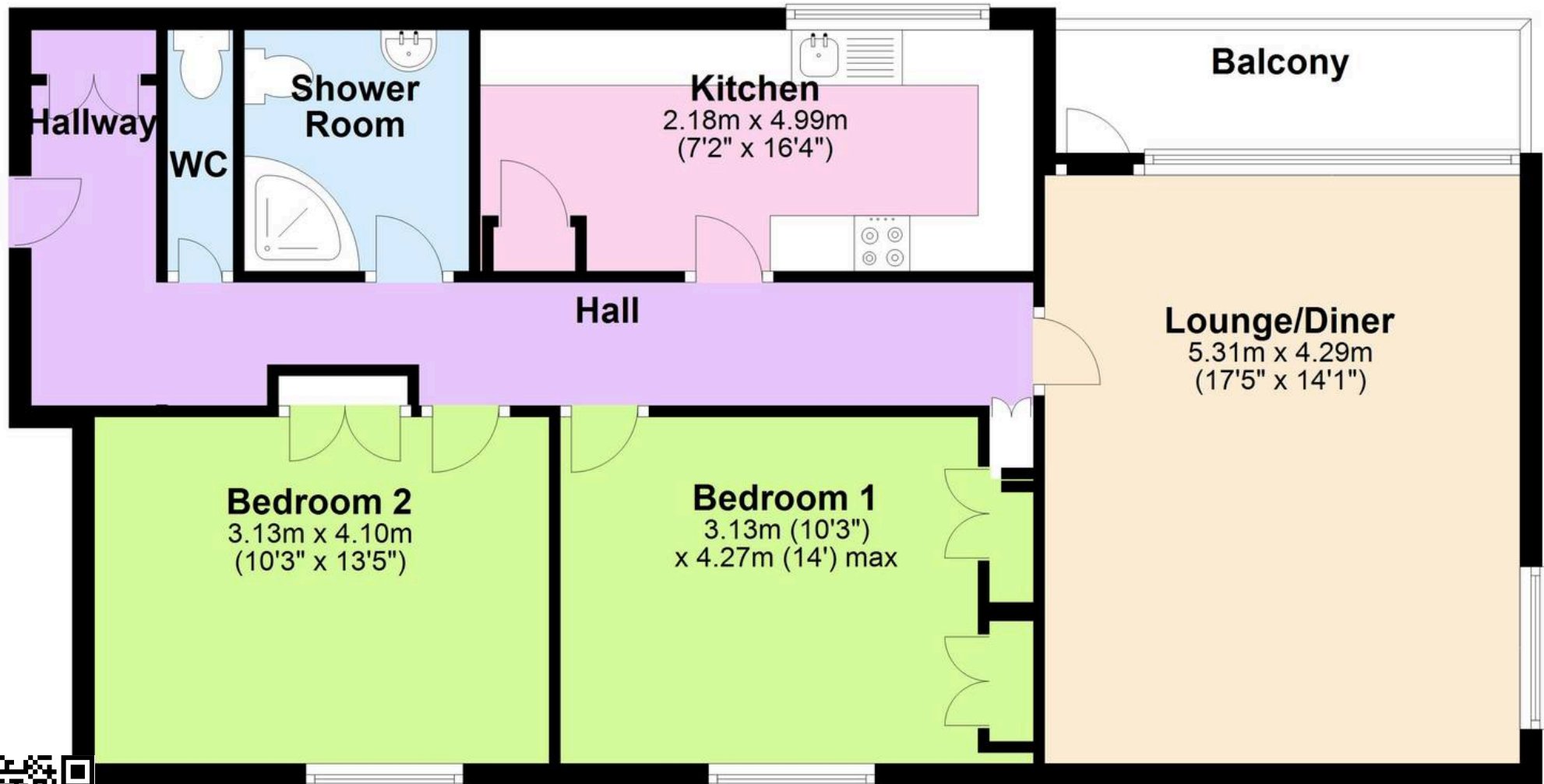
torquay@movewithabsolute.co.uk

movewithabsolute.co.uk/



Upper floor with lift

Approx. 81.3 sq. metres (874.7 sq. feet)



Total area: approx. 81.3 sq. metres (874.7 sq. feet)

Approx
Plan produced using PlanUp.

