



## Apt 2, La Rosaire Livermead Hill, Torquay – TQ2 6QX

Prices From £450,000





## Apartment 2

La Rosaire Livermead Hill, Torquay

**\*\* Open Home Event - 18/09/2025 between 12pm 2pm - no appointment necessary! \*\*** Luxurious seafront living in exclusive La Rosaire development. Award-winning architect-designed apartments with panoramic sea views, high-spec finishes, 2 beds, 2 baths, open-plan living, private balcony, undercroft parking, and lift access. Ideal location near Livermead Beach, Torquay, and Paignton. 10-year building warranty. Don't miss this outstanding coastal retreat!

Council Tax band: E

Tenure: Leasehold

- Exclusive gated seaside development of only 9 contemporary apartments
- Spectacular location, only a stones throw away from the beach!
- 10 Year builders warranty from 2024 with ICW
- Uninterrupted sea views
- Secure undercroft parking and video entry system
- Private balcony encompassing the stunning sea views and only plot remaining with a rear terrace!
- Two bedrooms and two bathrooms
- High quality kitchens with premium Miele integrated appliances
- App controlled underfloor heating throughout
- Luxurious bathrooms heated towel rails, and elegant tiling



## Apartment 2

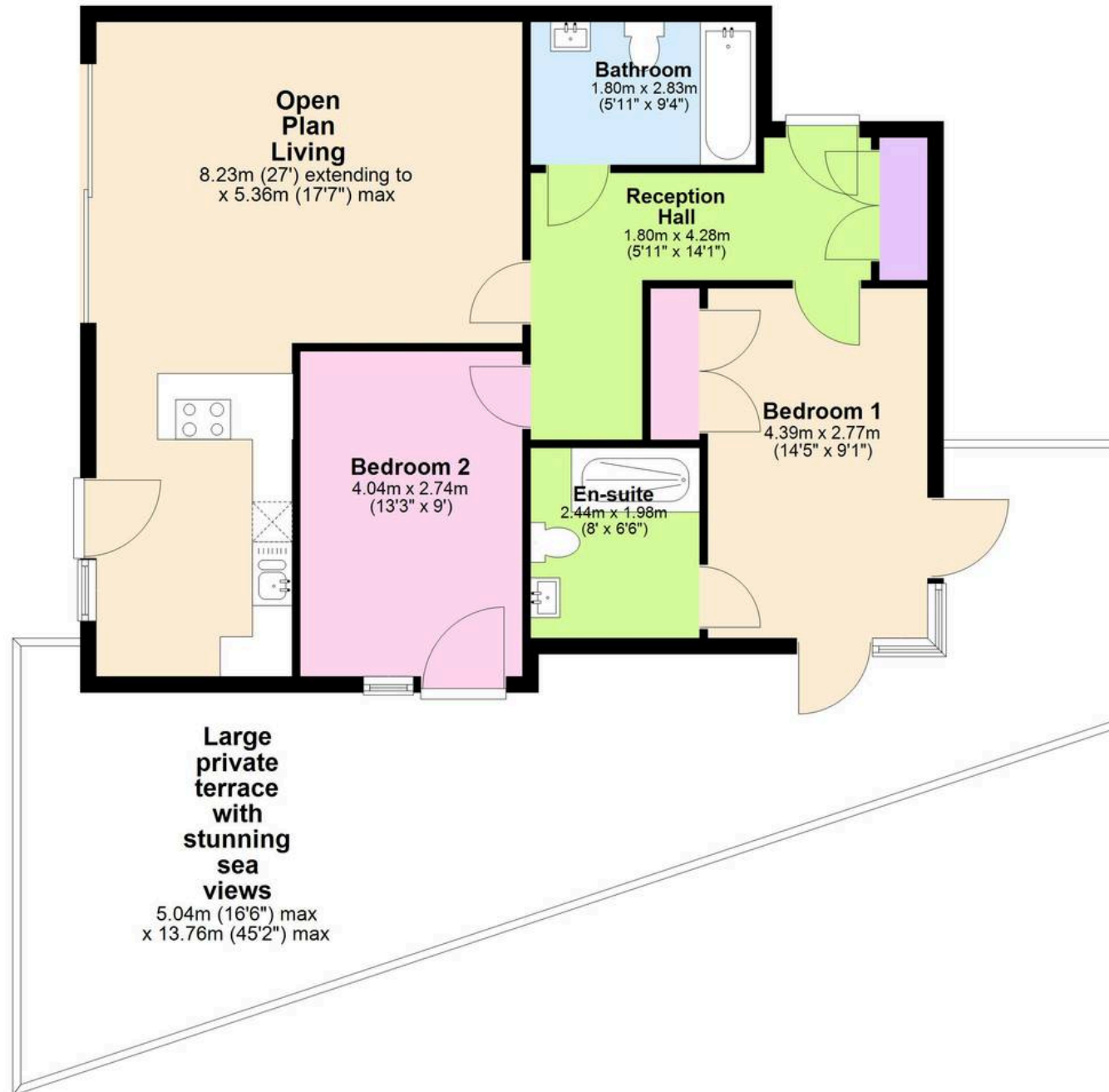
### La Rosaire Livermead Hill, Torquay

La Rosaire truly encompasses coastal living, being only a stones throw away from Livermead sands and Torquay seafront, with Torquay being synonymous with the English Riviera on Devon's south coast and has been a popular destination for tourism since the Victorian era. The lively town centre, seafront and beautiful deep water marina have lots to offer, with a brilliant selection of bars and restaurants, galleries and museums and plenty of shops and amenities. The horseshoe shaped bay is a natural safe haven for visiting cruise liners and a paradise for yachtsmen and boating enthusiasts, with craft from local sailing clubs regularly seen competing in the bay with national and international races throughout the year. Boat trips around the bay and to Brixham and Dartmouth are very popular and traditional sporting opportunities including golf, tennis, bowls, and cricket are all close by. Excellent communication links include local bus services and inter-city railway stations at both Torquay and Newton Abbot. The South Devon Highway gives good access to the vibrant cities of Exeter and Plymouth. The international airport at Exeter provides a gateway to destinations further afield.



## Ground Floor with lift access

Approx. 79.8 sq. metres (858.5 sq. feet)



Total area: approx. 79.8 sq. metres (858.5 sq. feet)