





Beau Soleil, Whidborne Close

TORQUAY

Beau Soleil is a remarkable, architect-designed home positioned on the prestigious Whidbourne Close in the exclusive Ilsham area of Torquay. Completed in 2017 by the acclaimed team at Charles Blake Associates, this striking HUF Haus-style residence offers a rare combination of high-end contemporary design, outstanding eco-efficiency, and awe-inspiring panoramic sea views across Tor Bay.

Constructed using steel and block and finished with aluminium fenestration by Harmony Profiles, the property was built to maximise its elevated coastal setting. A SIG rubberised roofing system, with the remainder of a 25-year guarantee, further enhances the durability and efficiency of the build. Floor-to-ceiling glazing throughout floods the home with natural light and frames uninterrupted sea views from most principal rooms. Now offered with two years remaining on its NHBC warranty, the home is as visually stunning as it is robustly constructed.



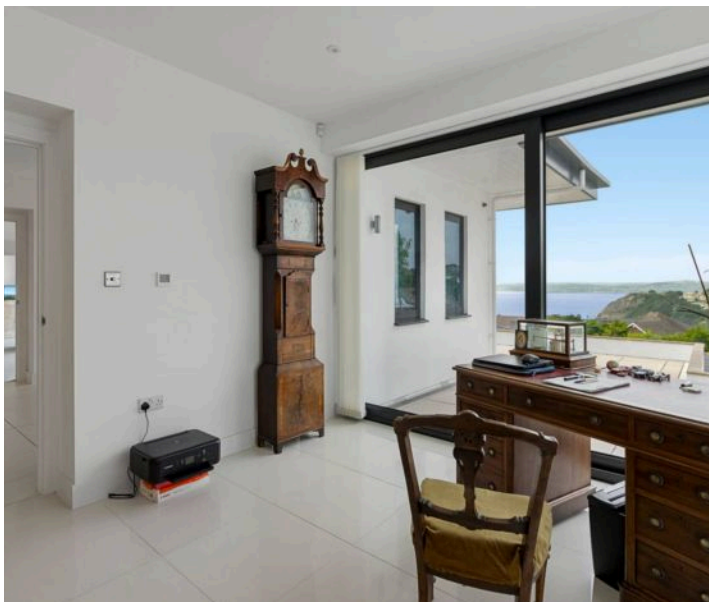
Highlights:

Inside, the layout offers both flexibility and sophistication. The accommodation includes four generous double bedrooms—all of which enjoy en-suite facilities—with two of the first-floor bedrooms also benefiting from dedicated dressing areas. A luxurious main bathroom and additional ground-floor cloakroom add to the comfort on offer. The spacious system 6 kitchen and dining room features granite worktops and a Quooker tap, complemented by a separate living room, a cosy snug, and a well-positioned home office designed to soak up the views. A mezzanine landing adds architectural interest, while the large first-floor sun terrace offers a commanding position to enjoy the ever-changing coastal landscape.

Practical features include underfloor heating to the ground floor, superfast broadband, Wi-Fi-controlled thermostats, and solar panels. A Sync Energy 7.4kW EV charging point, linked to the system, ensures efficient vehicle charging. To the front, there's also a utility room and a dedicated plant room housing the core electrical and mechanical services.

Outside, a spacious driveway provides ample off-road parking and leads to an integral garage with electric door. The front garden features a lawned area bordered by a stone wall, while a generous patio terrace provides the perfect vantage point to enjoy the coastal outlook.

Located just above the scenic Meadfoot Beach and within walking distance of the South West Coast Path and the popular Wellswood village, Beau Soleil offers a rare opportunity to acquire a home of distinction in one of Torquay's most sought-after locations—perfect for either a luxurious coastal retreat or an exceptional full-time residence.



2 Whidborne Close

TORQUAY, Torquay

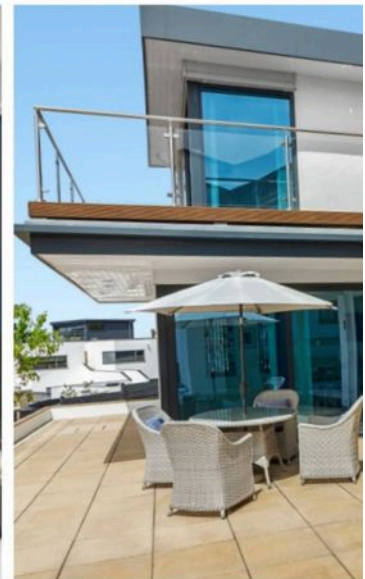
Council Tax band: G

Tenure: Freehold

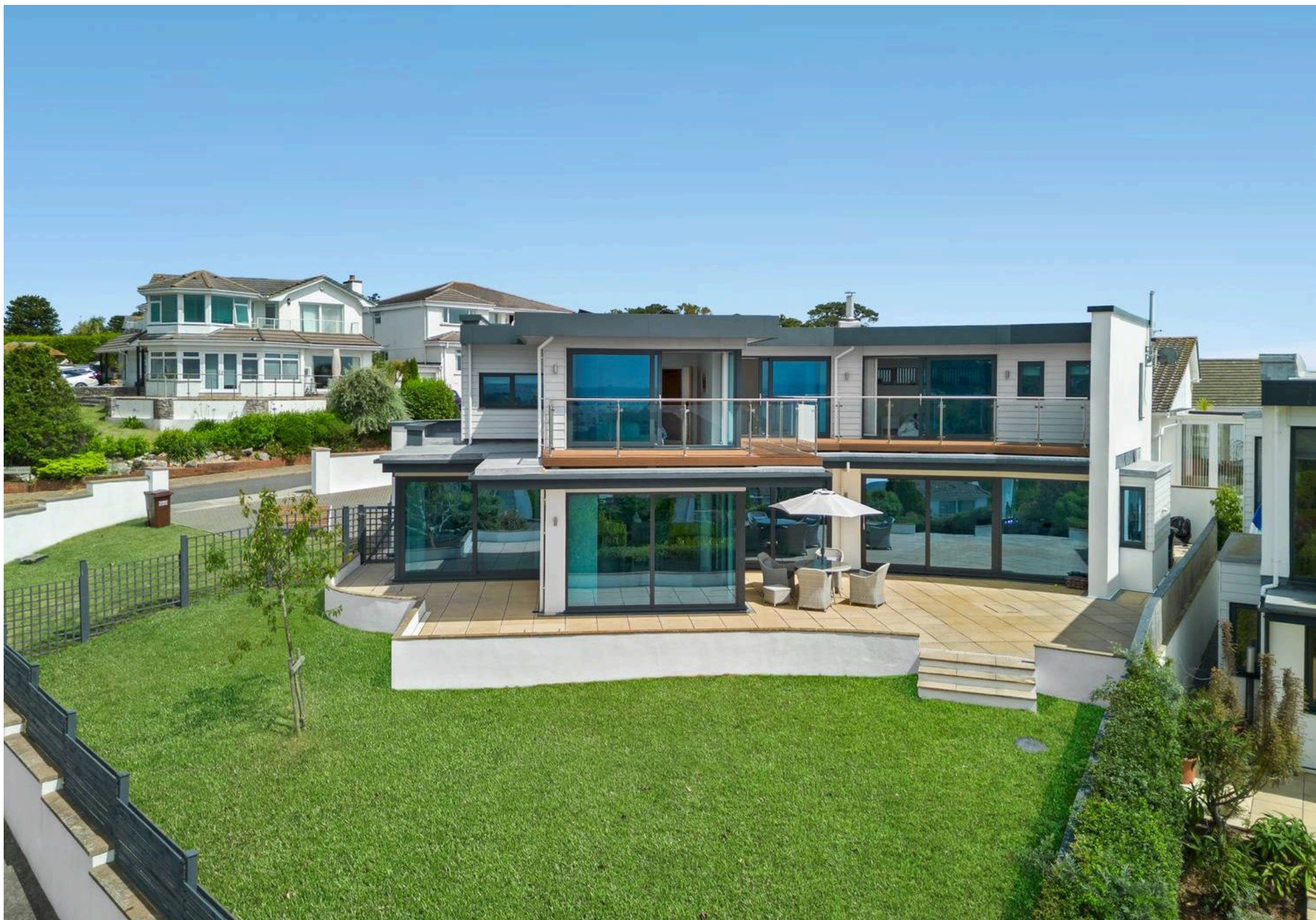
EPC Energy Efficiency Rating: B

EPC Environmental Impact Rating: B

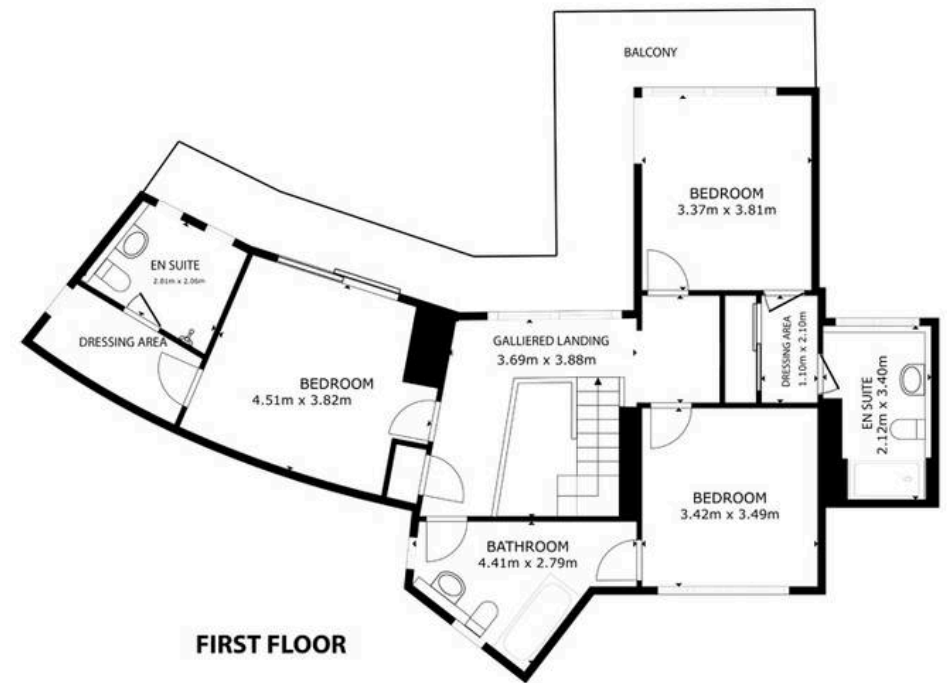
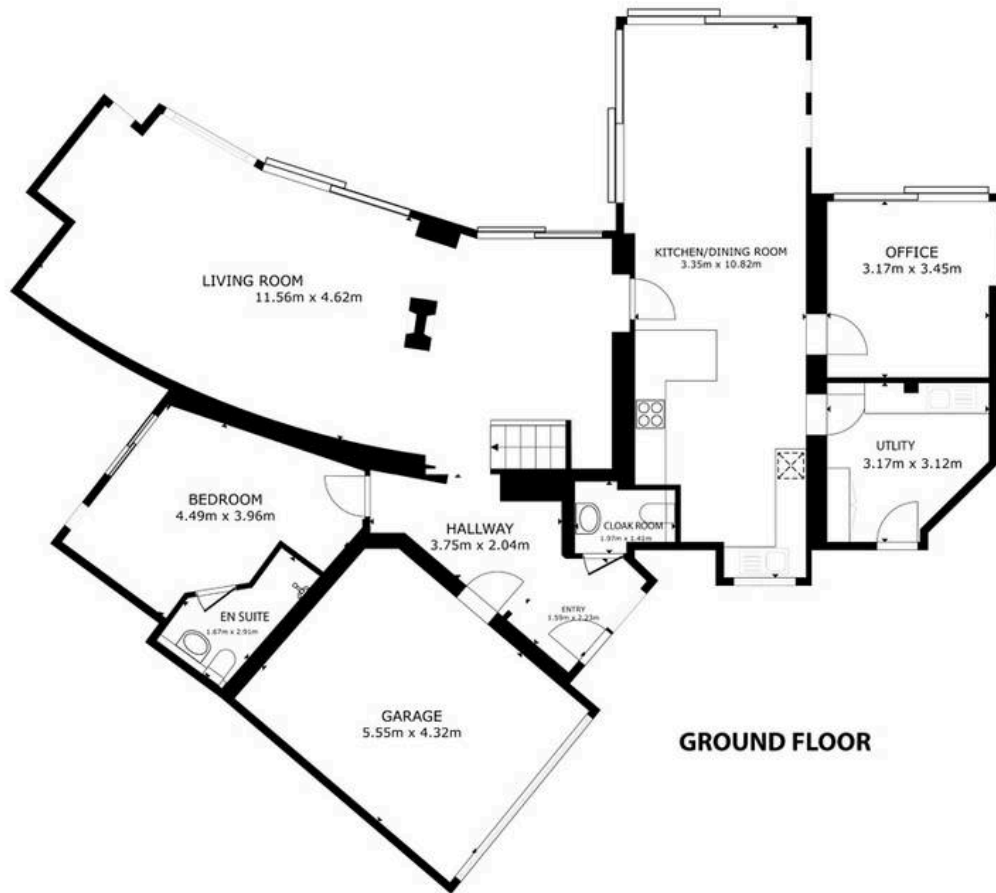
- Architect-designed HUF Haus-style home (2017 build)
- Elevated position with panoramic sea views
- Four double bedrooms, all en-suite, two with dressing areas
- Spacious kitchen/dining room with granite worktops and Quooker tap
- Floor-to-ceiling glazing throughout for natural light and views
- SIG rubberised roofing with remainder of 25-year guarantee
- Underfloor heating (ground floor) and Wi-Fi thermostats
- Solar panels and 7.4kW Sync Energy EV charging point
- Utility room, snug, and separate study
- Driveway parking, electric garage door, and large sea-facing terrace



ABSOLUTE
SALES & LETTINGS









Absolute Sales & Lettings

Absolute Sales & Lettings Ltd, 13 Ilsham Road - TQ1 2JG

01803 214214

torquay@movewithabsolute.co.uk

movewithabsolute.co.uk/

