



Flat 21, Glenside Court Higher Erith Road, Torquay – TQ1 2R

Guide Price £75,000





Flat 21

Glenside Court Higher Erith Road,
Torquay

Nestled in Wellswood Village, 21 Glenside Court is a charming first-floor retirement apartment with lift access, balcony, spacious bedroom, upgraded shower room, and allocated parking. Low-cost with community spirit, modern kitchen, ample storage, and luxurious shower. Stunning gardens and no onward chain. Viewing recommended!

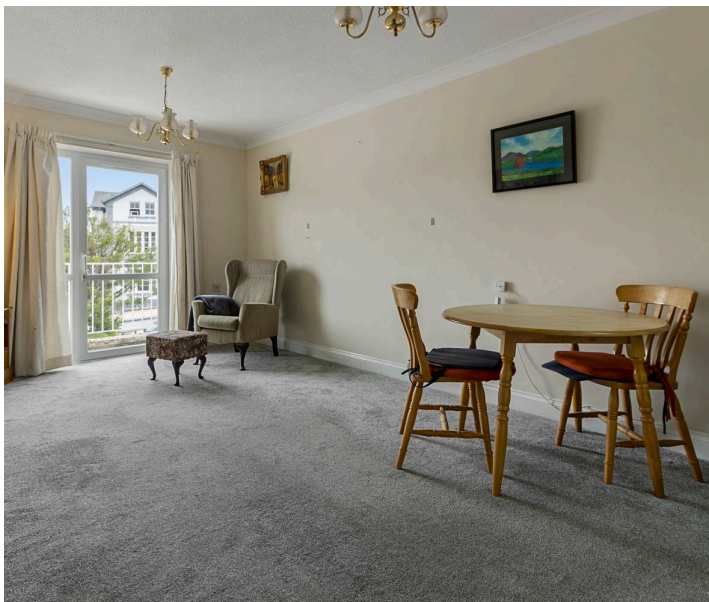
Council Tax band: B

Tenure: Leasehold

EPC Energy Efficiency Rating: B

EPC Environmental Impact Rating: D

- Prime Wellswood Village location
- First-floor apartment with lift access
- Spacious bedroom with built-in wardrobes
- Upgraded shower room with a walk-in double shower
- Front-facing balcony with village views
- Modern kitchen with ample storage and appliances
- Allocated parking space included
- Beautiful south-facing residents' gardens
- Garden-level storage area for each apartment
- No onward chain for a smooth purchase



Flat 21

Glenside Court Higher Erith Road, Torquay

The development is set in the sought-after Lincombes Conservation area close to the village style community of Wellswood with its range of shops, cafes, post office, pharmacy and church. The local beaches at Meadfoot and Anstey's Cove and the facilities of town, harbour and seafront esplanade are just a short distance away. A regular bus service operates from both Babbacombe Road and Ilsham Road leading to the harbourside and town, out of town shopping areas and Torbay Hospital

Absolute Sales & Lettings

Absolute Sales & Lettings Ltd, 13 Ilsham Road - TQ1 2JG

01803 214214

torquay@movewithabsolute.co.uk

movewithabsolute.co.uk/



First floor with lift access

Approx. 44.7 sq. metres (481.6 sq. feet)



Total area: approx. 44.7 sq. metres (481.6 sq. feet)

