



3 Mead Court Mead Close, Paignton

Paignton

Guide Price **£110,000**

ABSOLUTE



3 Mead Court Mead Close

Paignton, Paignton

Located near Oldway Gardens, this ground floor maisonette offers direct access to communal gardens. Well-presented interior, making it ideal for downsizing, first-time buyers, or investors. Conveniently close to amenities with no chain. A rare find offering a tranquil position. Schedule a viewing today!

Council Tax band: A

Tenure: Leasehold

EPC Energy Efficiency Rating: D

EPC Environmental Impact Rating: E

- Purpose Built one bed ground floor Masionette
- Offered to the market with no Forward Chain
- Direct access to communal gardens
- Communal Gardens & Parking
- Well presented throughout
- Quietly situated in a secluded position close to Oldway Gardens
- Positioned close to local amenities & transport links
- Ideal for anyone looking to Downsize, Investors or First time buyers



3 Mead Court Mead Close

Paignton, Paignton

The property is situated in a tucked away, level location to the town centre which boasts an array of shops, facilities and amenities. The picturesque Paignton sea front is also just 1/3 of a mile level walk where you can find an array of bars and restaurants. The bus and train station are located in the town centre with connections to the neighbouring towns of Brixham and Torquay with Paignton train station having connections to the mainline station of Newton Abbot.

Absolute Sales & Lettings

Absolute Sales & Lettings, 27 Hyde Road - TQ4 5BP

01803 890110

paignton@movewithabsolute.co.uk

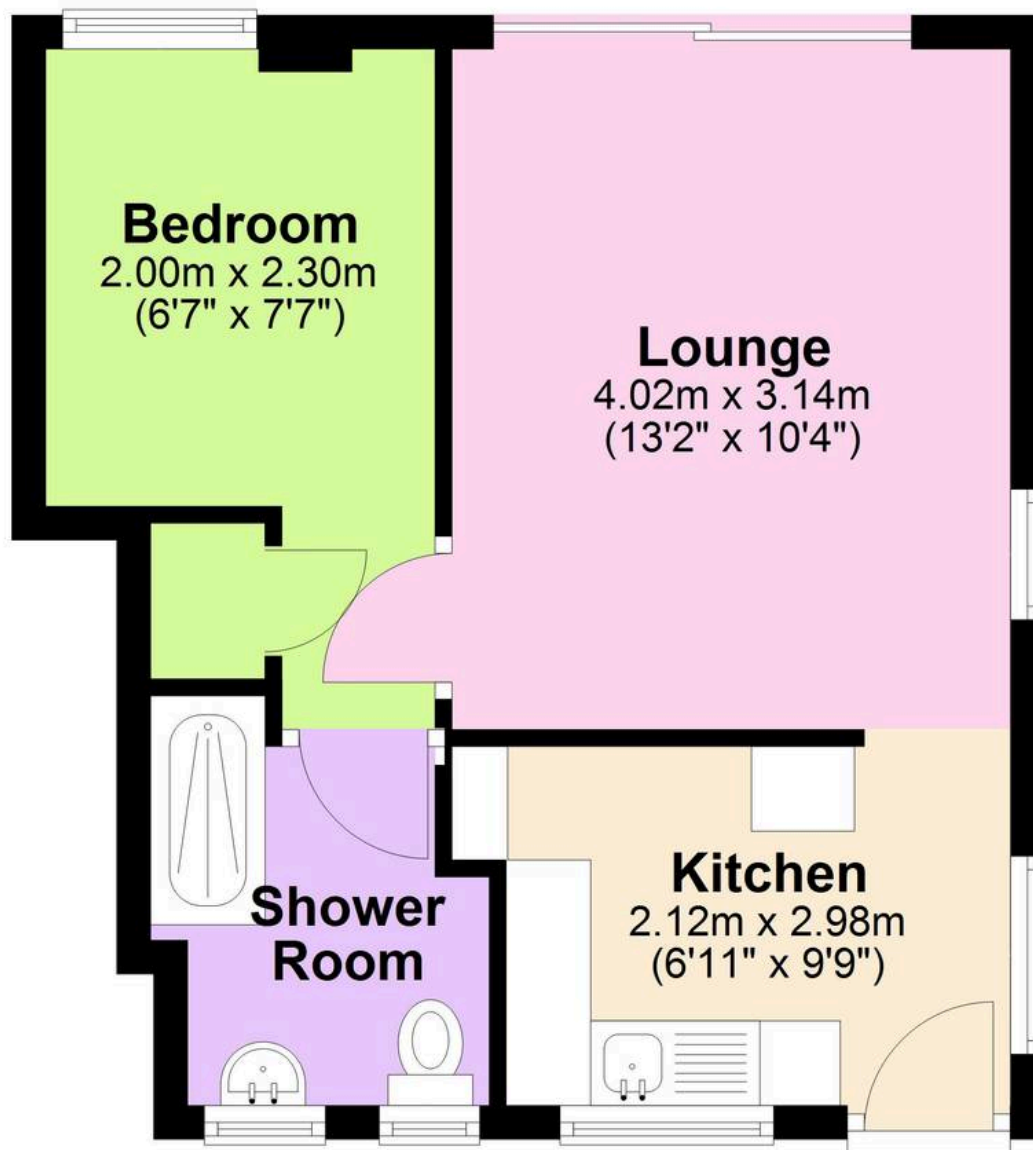
<http://www.movewithabsolute.co.uk>



ABS

Ground Floor

Approx. 32.4 sq. metres (348.5 sq. feet)



Total area: approx. 32.4 sq. metres (348.5 sq. feet)

