



22 Page House Torbay Road, Paignton

Paignton

Guide Price £190,000

ABSOLUTE





## 22 Page House Torbay Road

Paignton, Paignton

Top floor purpose-built coastal 2-bed apartment with far-reaching sea views. Allocated parking, no forward chain, wrap-around balcony. Lift access, open-plan living, walk-in dressing room. Perfect for those desiring coastal living with convenience. Secure gated parking, Paignton High Street views. Ideal seaside escape in Paignton.

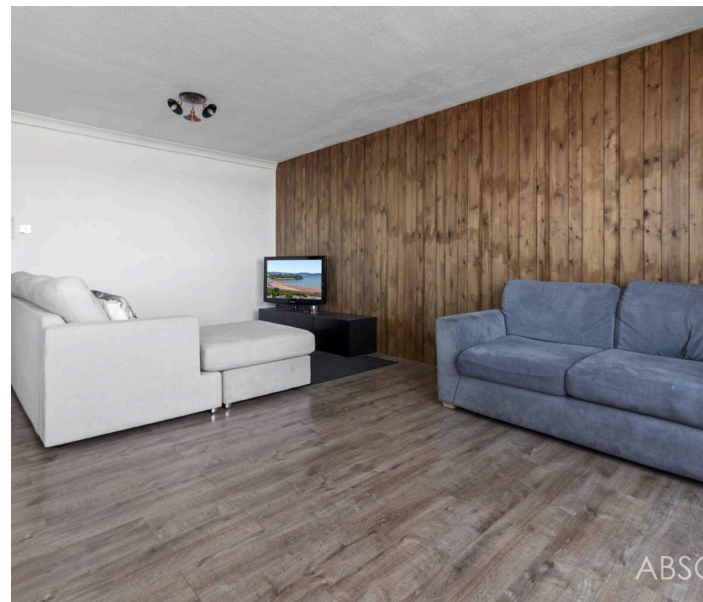
Council Tax band: C

Tenure: Leasehold

EPC Energy Efficiency Rating: E

EPC Environmental Impact Rating: E

- Top floor purpose built two bedroom coastal apartment
- Far reaching Sea and coastal views
- Allocated covered parking for one vehicle with gated access
- No forward chain with property
- wrap-around balcony perfect to enjoy the local scenery
- Convenient for local amenities and town centre access
- Level walk to Paignton Seafront and Beach
- Lift access to property to all floors
- Light and spacious open-plan living / kitchen space
- Well-presented throughout ideal for anyone looking to be close to the coast





## 22 Page House Torbay Road

Paignton, Paignton

The property is located along Paignton sea front from where it enjoys stunning sea views a stones throw from the main town centre which boasts an array of shops, facilities and amenities. The main bus and train station are within 1/3 of a mile level walk with connections to the neighbouring towns of Torquay and Brixham on the bus and connections to the mainline train station at Newton Abbot.

### Absolute Sales & Lettings

Absolute Sales & Lettings, 27 Hyde Road - TQ4 5BP

01803 890110

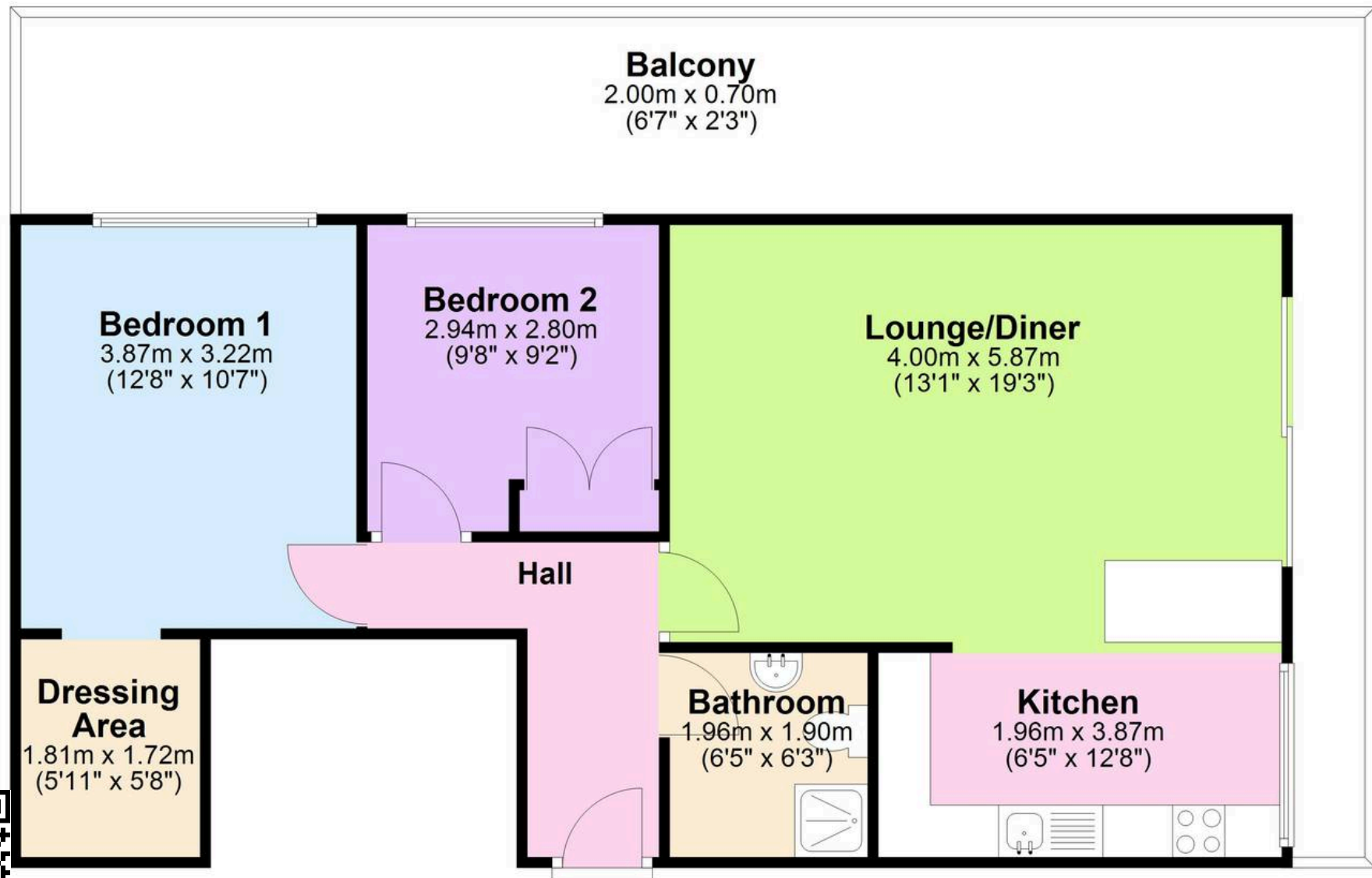
[paignton@movewithabsolute.co.uk](mailto:paignton@movewithabsolute.co.uk)

<http://www.movewithabsolute.co.uk>



## Top Floor

Approx. 65.9 sq. metres (709.5 sq. feet)



Total area: approx. 65.9 sq. metres (709.5 sq. feet)

