

# Benedict Road, Hull, East Riding of Yorkshire

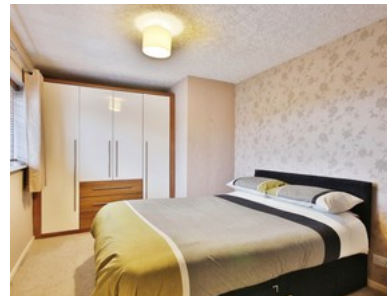
## Guide Price £115,000 - £125,000






**beercocks**  
valuing people, not just houses



- ✔ Perfect For First-time Buyers
- ✔ 2 Large Double Bedrooms With Ample Storage
- ✔ Sun-kissed Kitchen And Convenient Utility Room
- ✔ Landscaped Rear Garden
- ✔ Prime Location Near Shops, Bars, Restaurants And Schools And Access To A63/m62 And The Humber Bridge
- ✔ Freehold
- ✔ Council Tax Band A
- ✔ Epc C



Bedroom  2 Bathroom  1 Reception  1

Guide Price

**£115,000**