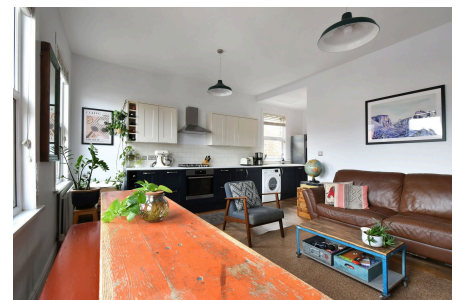


Rathfern Road, London, SE6 4NL

Guide Price £425,000

🛏 2 🚿 1 🚗 1



A two double bedroom first floor Victorian property with a private entrance, private garden and a share of freehold, located on a quiet street which is well positioned for access to Catford and Forest Hill Stations.

The property has been tastefully decorated throughout and has a modern open plan lounge and kitchen, double glazed windows throughout, two double bedrooms, a modern bathroom suite and great storage in the loft space, which subject to the necessary permissions could be converted.



The private garden at the rear is accessed via a side gate is mainly lawned with a some raised planters and a shed.

Tenure Share Of Freehold

Council Tax Band B

EPC Rating C

Key Features

- Two Double Bedroom Flat
- Private Garden
- Share Of Freehold
- Modern Bathroom Suite
- Council Tax Band B
- First Floor
- Own Entrance
- Open Plan Lounge and Kitchen
- EPC Rating C
- Well Presented

