

**Mayow Road, London, SE26 4JA**

**£875,000**

**4 2 2**



**OPEN DAY SATURDAY 22ND MARCH.** An absolutely stunning 1920s four bedroom semi-detached family home located in the sought after Thorpes Conservation area, close to Mayow Park as well as Sydenham High Street, Sydenham Station and the array of shops, cafes and restaurants which form the town centre.

Offering 1465 sq ft of internal living space and a 60ft West facing garden, the property boasts plenty of period features such as a tiled entrance floor, stripped doors, parquet flooring to the dining area and feature fireplaces



The ground floor accommodation comprises a welcoming entrance hallway, a cosy lounge with a working fireplace and a bay window to the front, there is a stylish ground floor wet room and WC, the main entertaining space is a stunning and open plan kitchen and dining area overlooking the garden. The kitchen has shaker style units, a range oven and modern work surfaces with plenty of storage above and below. From the kitchen there is a light and airy sn

## Key Features

- Four Bedroom Family Home
- Semi Detached
- Thorpe Conservation Area
- Close to Sydenham Station
- Close to Town Centre
- West Facing Garden
- Stunning Kitchen Dining Room
- Freehold
- Council Tax Band E
- Energy Rating D

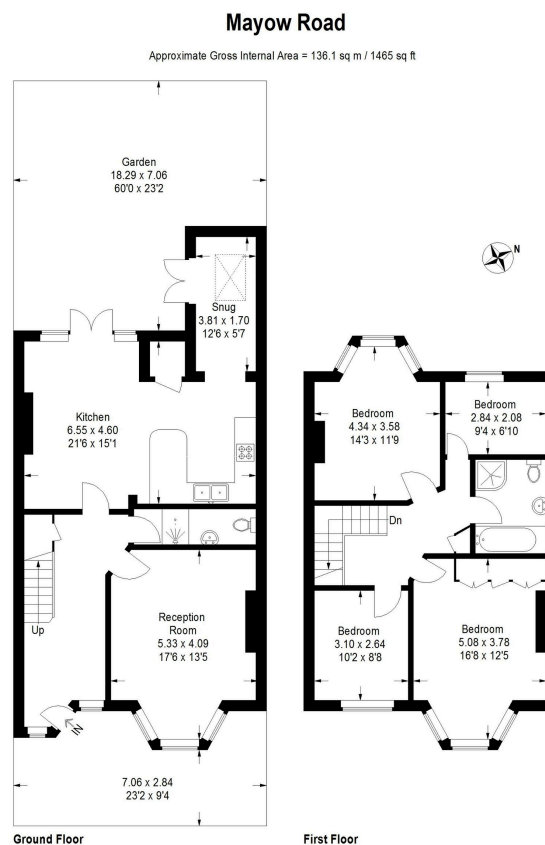


Illustration for identification purposes only,  
measurements are approximate.  
Drawn for Benjamin Matthews