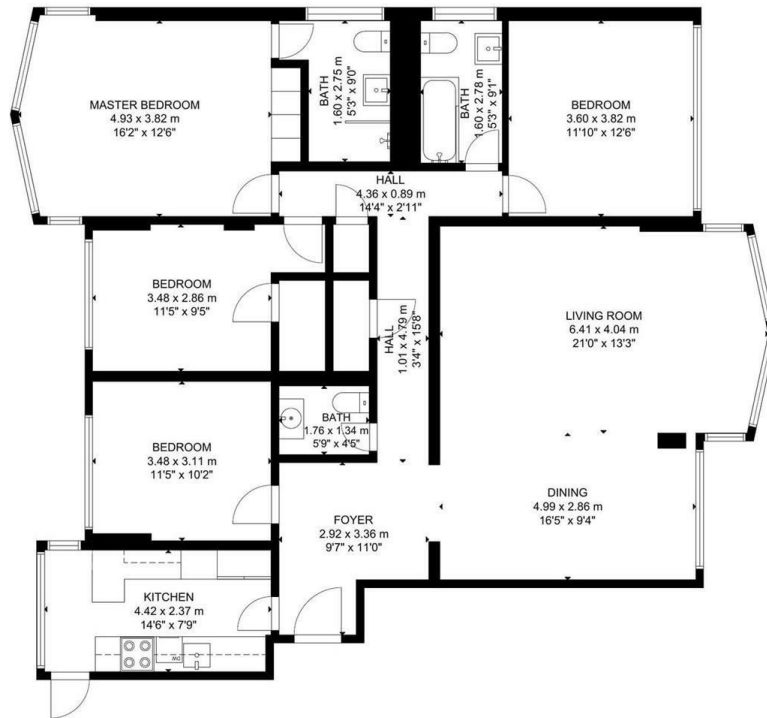


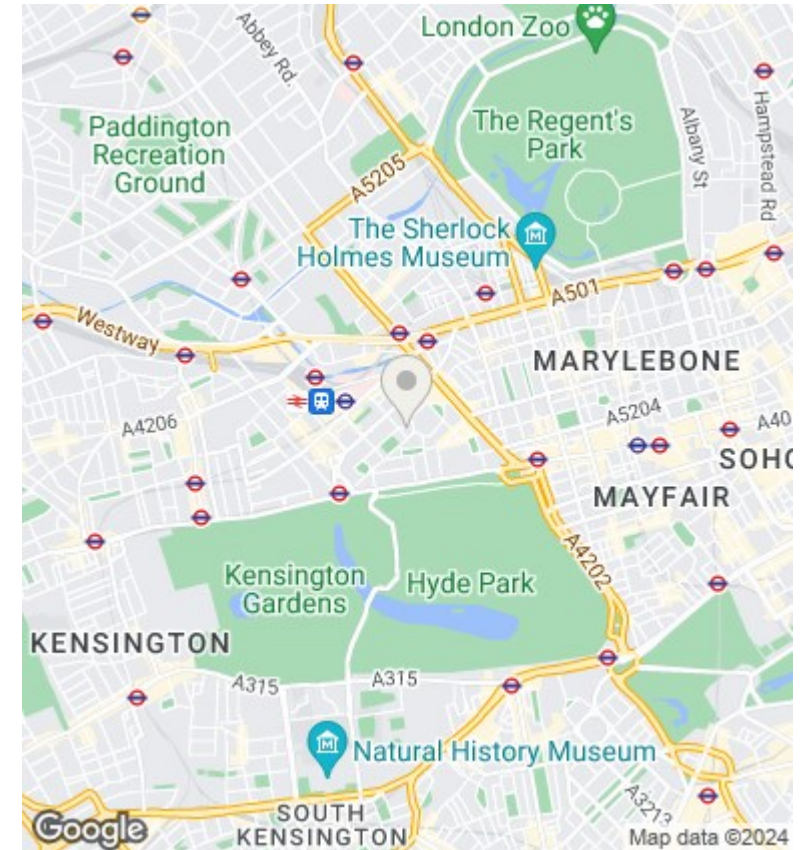
## Hyde Park Crescent

£1,840 Per Week



SEVENTH FLOOR

GROSS INTERNAL AREA  
 TOTAL: 148 m<sup>2</sup>/1,590 sq ft  
 SEVENTH FLOOR: 148 m<sup>2</sup>/1,590 sq ft  
 SIZE AND DIMENSIONS ARE APPROXIMATE. ACTUAL MAY VARY.



## Directions

## Viewings

Viewings by arrangement only. Call 02070990800 to make an appointment.

## Council Tax Band

H

## EPC Rating:

E

Energy Efficiency Rating		Current	Potential
<i>Very energy efficient - lower running costs</i>			
(92 plus) <b>A</b>			
(81-91) <b>B</b>			
(69-80) <b>C</b>			
(55-68) <b>D</b>			<b>59</b>
(39-54) <b>E</b>		<b>40</b>	
(21-38) <b>F</b>			
(1-20) <b>G</b>			
<i>Not energy efficient - higher running costs</i>			
<b>England &amp; Wales</b>		EU Directive 2002/91/EC	