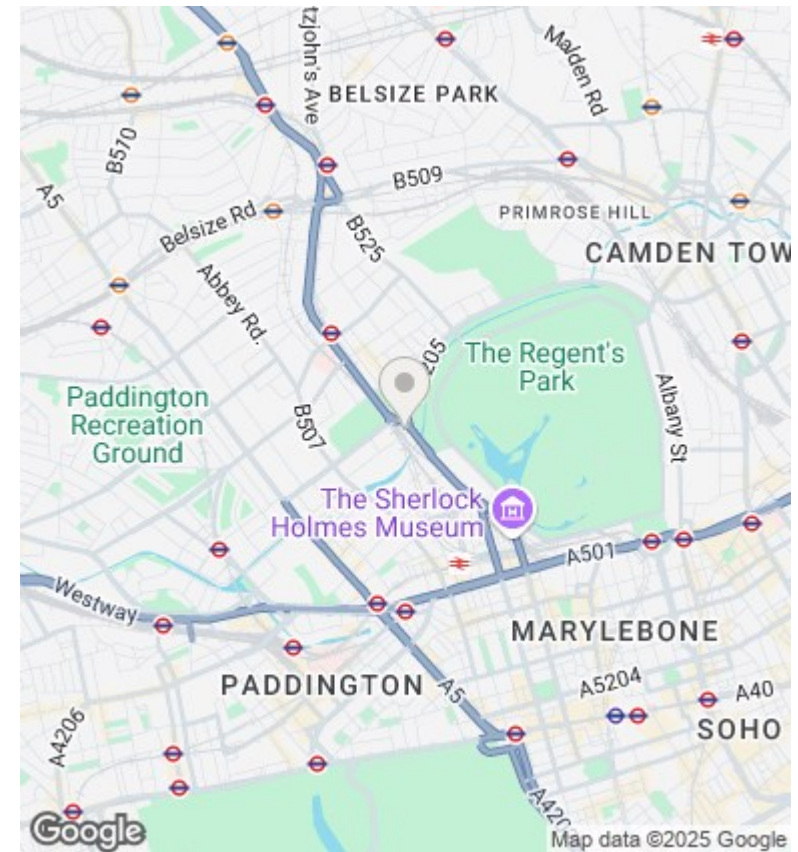
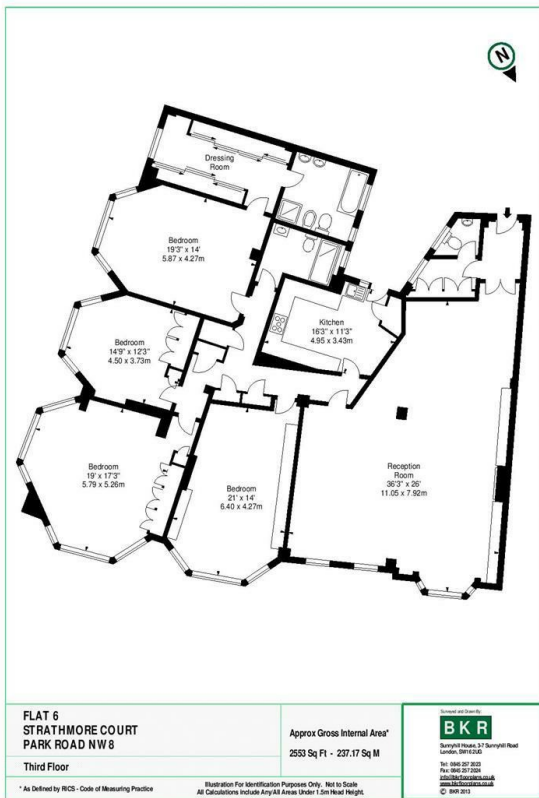




## Strathmore Court, London

£2,425 Per Week

- Master Bedroom
- Fourth Bedroom
- Lift
- Video Entry
- Second Bedroom
- Bathroom (En-suite)
- CCTV
- Third Bedroom
- Reception Room
- Porter



## Directions

## Viewings

Viewings by arrangement only. Call 02070990800 to make an appointment.

## Council Tax Band

H

## EPC Rating:

C

Energy Efficiency Rating		
	Current	Potential
<i>Very energy efficient - lower running costs</i>		
(92 plus) <b>A</b>		
(81-91) <b>B</b>		
(69-80) <b>C</b>	69	71
(55-68) <b>D</b>		
(39-54) <b>E</b>		
(21-38) <b>F</b>		
(1-20) <b>G</b>		
<i>Not energy efficient - higher running costs</i>		
<b>England &amp; Wales</b>	EU Directive 2002/91/EC	