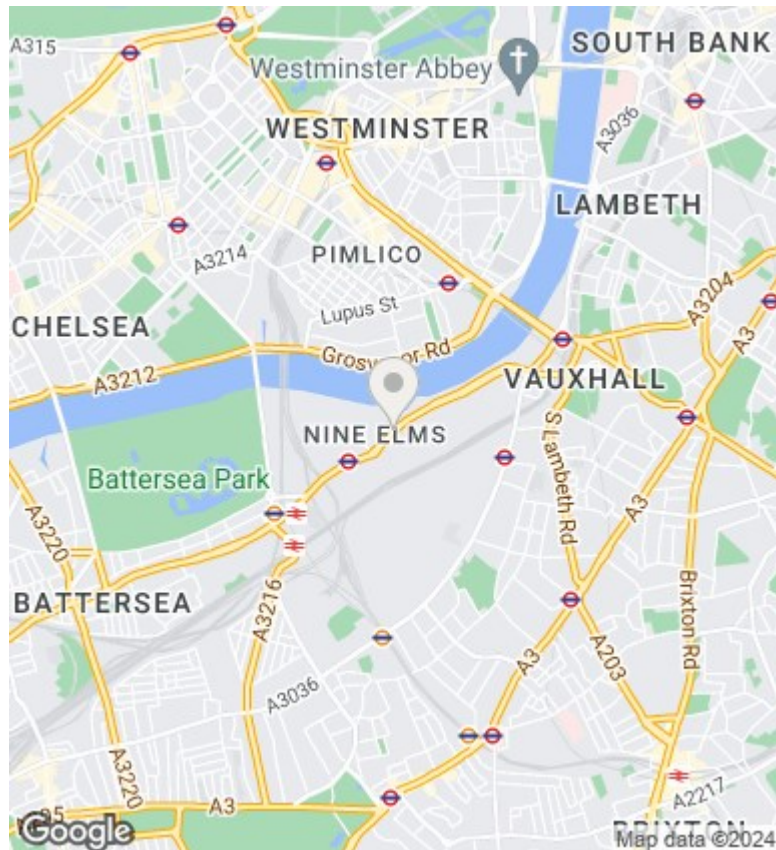
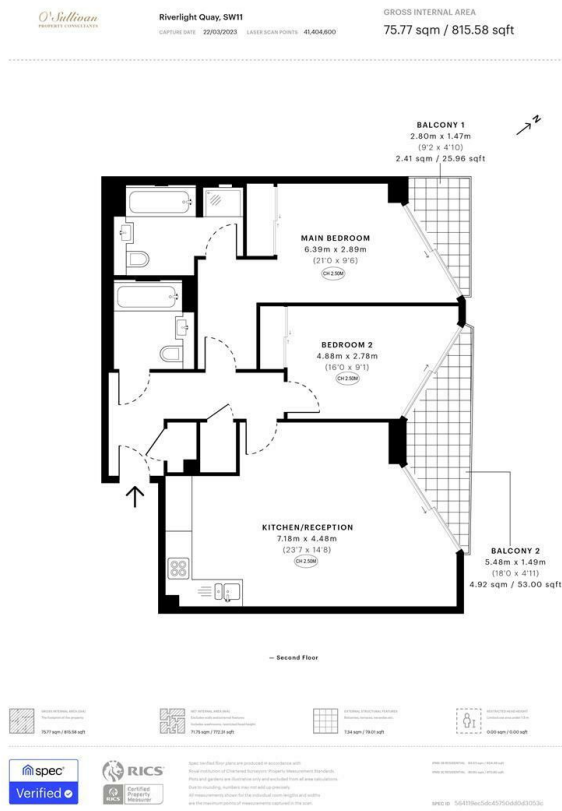


Apartment 85, 4 Riverlight Quay, London, SW11 8AA

Guide Price £945,000

- Two double bedroom apartment
- Private balcony
- Walking distance to Battersea Underground station and Vauxhall & Nine Elms Underground Stations
- Fully fitted eat-in kitchen with integrated appliances
- 24 Hr Concierge
- Built in Storage
- Onsite Amenities: Gym, Swimming Pool, Cinema Room & Virtual Golf



Directions

Viewings

Viewings by arrangement only. Call 02070990800 to make an appointment.

Council Tax Band

F

EPC Rating:

| Energy Efficiency Rating | | |
|--|-------------------------|-----------|
| | Current | Potential |
| <i>Very energy efficient - lower running costs</i> | | |
| (92 plus) A | | |
| (81-91) B | | |
| (69-80) C | | |
| (55-68) D | | |
| (39-54) E | | |
| (21-38) F | | |
| (1-20) G | | |
| <i>Not energy efficient - higher running costs</i> | | |
| England & Wales | EU Directive 2002/91/EC | |